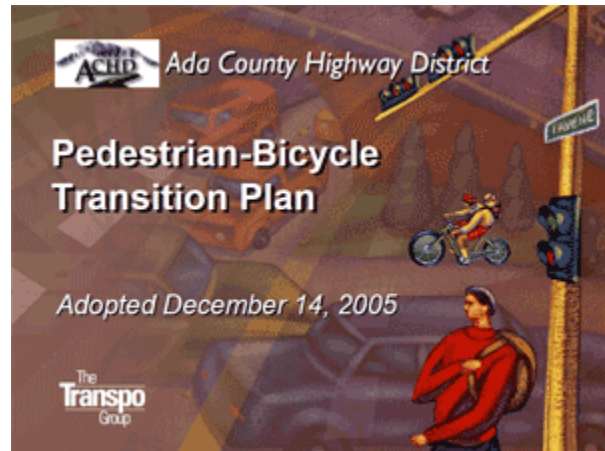


Ada County Highway District ADA Annual Report - Fiscal Year 2017

Background

On December 14, 2005 the Ada County Highway District (ACHD) Commission adopted the Pedestrian Bicycle Transition Plan (PBTP). The PBTP is intended to provide a comprehensive program to enhance the Ada County urban area pedestrian and bicycle system. This effort was initiated by ACHD, with a primary emphasis on addressing federal pedestrian planning guidelines and the regulatory requirements of the Americans with Disabilities Act (ADA), enacted on July 26, 1990.



ACHD has jurisdiction and responsibility for all public roads and streets within Ada County, Idaho, except state highways and interstate freeways. Under Idaho law, pedestrian (typically sidewalks) and bicycle system components of most public streets also fall within ACHD's jurisdiction.

The ADA provides comprehensive civil rights protections to persons with disabilities in the areas of employment, state and local government services, and access to public accommodations, transportation, telecommunications and other public facilities, including sidewalks.

There are five statutory titles to the ADA; Title II is of most concern to ACHD. The PBTP is intended to accommodate the most recent ADA policies and rules. Title II of the ADA prohibits state and local governments from discriminating against persons with disabilities by requiring them to make all programs, services, and activities accessible to persons with disabilities. Title II requires a public entity to evaluate its services, programs, policies, practices, and facilities to determine whether they are in compliance with the nondiscrimination requirements of the ADA.

The ADA requires that a transition plan be prepared, to describe any structural or physical changes required to make programs accessible. The transition plan outlines the methods by which physical or structural changes will be made to affect the nondiscrimination policies described in Title II. Commensurate with the ADA requirements for inventory and self-evaluation, ACHD targeted a significant portion of the overall planning effort to complete a walking inventory of the entire street-side pedestrian system within the Ada County urban areas.

In 2004-2005 more than 2,800 miles of existing and missing sidewalks and 19,300 street corners (with 15,500 curb ramps) were inventoried and assessed as part of ACHD's self-evaluation. Documenting the location, type and condition of sidewalks and curb ramps is an important step in the pedestrian planning

effort. A full inventory of missing sidewalks helps identify the critical “gaps” to fill. ACHD successfully completed a thorough inventory of the pedestrian system as the basis of the PBTP planning effort.

In addition to establishing the baseline data set, ACHD established standard operating procedures to ensure that the GIS database for sidewalk and curb ramps remains current as new facilities are installed and substandard facilities are repaired.

Purpose

Since the adoption of the PBTP, ACHD has worked diligently to plan, develop and construct improvements to the pedestrian system that bring the sidewalks and curb ramps in Ada County into compliance with ADA. The purpose of this Annual Report is to describe the improvements to the pedestrian system that occurred in fiscal year 2017. Each fiscal year, ACHD catalogs the new improvements, which are added to ACHD’s comprehensive pedestrian facility database system.

New Facilities

ACHD is constantly expanding the length of sidewalks and number of curb ramps in Ada County and its six cities. The new sidewalks and curb ramps are primarily constructed through one of the following programs or activities:

- Large scale ACHD “Capital Projects” such as roadway expansion, and overlays;
- Smaller scale ACHD “Community Programs Projects” such as sidewalk construction, safe routes to school projects, and curb ramps;
- Residential and commercial subdivisions;
- Miscellaneous commercial and residential building permits.



ACHD expends significant amounts of federal and local funds to construct new improvements to the pedestrian system each fiscal year. In addition to sidewalks and curb ramps that are constructed with ACHD Capital Projects (i.e. roadway widening and overlays), the ACHD Commission has dedicated five percent of ACHD’s annual capital budget to pedestrian specific projects (not associated with a specific roadway project). In 2009 Ada County voters approved an increase in vehicle registration fees to fund pedestrian projects near schools. These efforts by ACHD significantly exceed what is required by the Federal Highway Administration (FHWA)’s Safe Routes to School Program, a program which makes federal funding available through grants. ACHD applies for federal grants, but has historically been a leader in locally funded safe routes to school improvements.

In addition, private development through subdivisions and new development also contribute to the expansion of ACHD’s pedestrian network. ACHD works closely with developers to ensure that the pedestrian facilities constructed with private funds are ADA compliant. ACHD inspectors visually inspect and sign off on all improvements in the public right-of-prior to official acceptance of the improvements.

Facility Maintenance

ACHD also has a Sidewalk Repair Program that focuses on repairing or reconstructing substandard sidewalks and curb ramps. The sidewalk repair program is ACHD's programmatic approach to repairing and replacing substandard pedestrian facilities. This program also repairs or replaces sidewalk and curb ramps based on citizen concerns/requests.

Fiscal Year 2017 System Improvements

In fiscal year 2017, ACHD and private development installed over 98.5 miles of new sidewalks in Ada County. In addition to the new sidewalks, ACHD repaired over 1.9 miles of substandard sidewalks. Figure 1 below illustrates the total mileage of new and repaired sidewalk for fiscal year 2017 broken down by jurisdiction. The total estimated investment in new and repaired sidewalks projects for fiscal year 2017 is close to \$11.9 million. (Further project details and cost estimates are described in Appendix A and a map of project locations is shown in Appendix C).

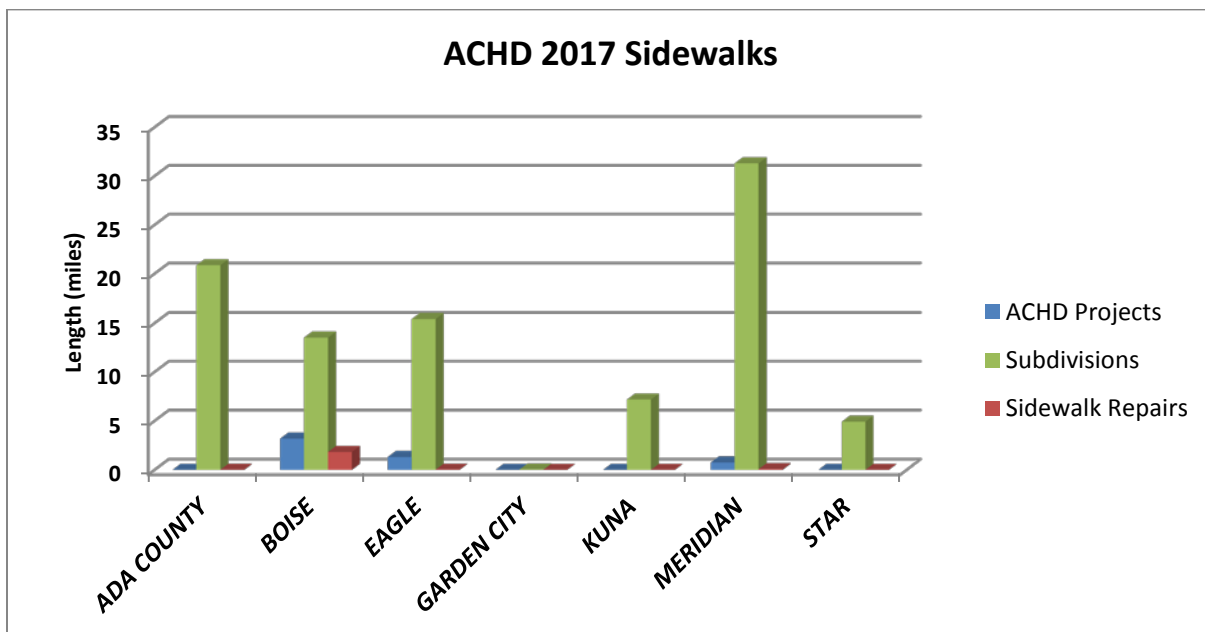


Figure 1: Sidewalk Projects, 2017

During the same time period, ACHD and private development installed a total of 1,071 pedestrian ramps across Ada County, shown in figure 2. ACHD through its maintenance activities and sidewalk repair program replaced or upgraded 42 pedestrian ramps to bring them into compliance with current ADA standards. The total estimated investment in new and repaired/replaced curb ramps for fiscal year 2017 is \$1.7 million (Further project details and cost estimates are described in Appendix A and map of project locations is shown in Appendix B).

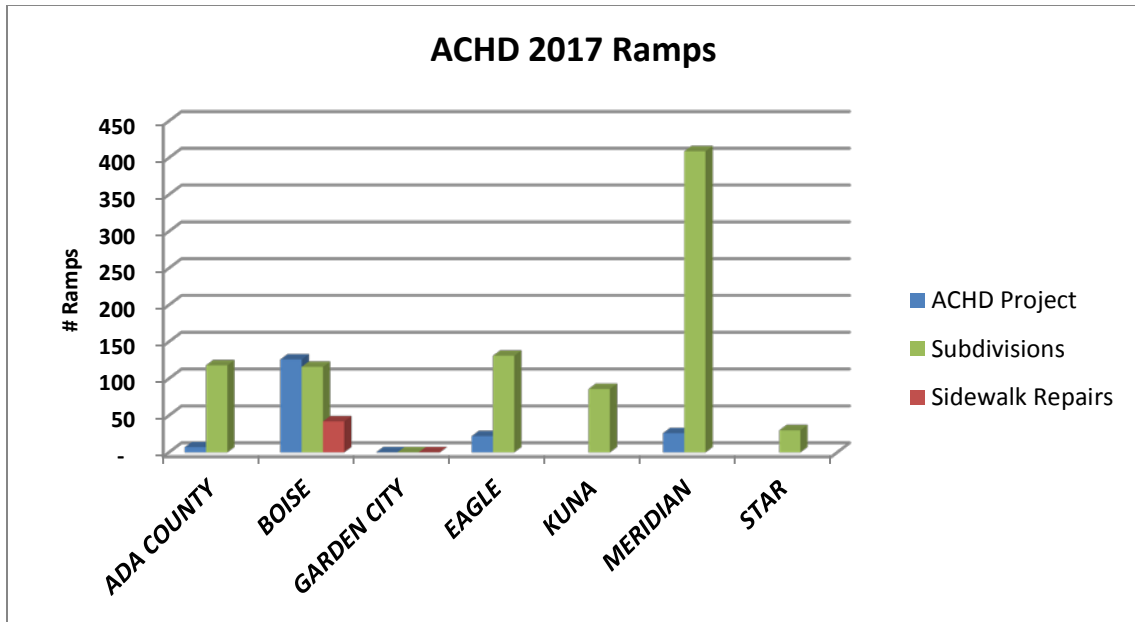


Figure 2: Ramp Projects, 2017

Appendix A: Sidewalk Projects

Fiscal Year 2017 Sidewalk Repair Projects

Project	Jurisdiction	WIDTH (ft)	Length (ft)	Estimated Cost
Jefferson Bridge - 100-215003	BOISE	7	42	\$1,470
Jefferson Bridge - 100-215003	BOISE	7	46	\$1,610
Targee St, Maple Grove Rd to Penninger Dr	BOISE	5	297	\$7,425
Targee St, Maple Grove Rd to Penninger Dr	BOISE	5	804	\$20,100
Targee St, Maple Grove Rd to Penninger Dr	BOISE	5	36	\$900
Targee St, Maple Grove Rd to Penninger Dr	BOISE	5	35	\$875
Targee St, Maple Grove Rd to Penninger Dr	BOISE	5	303	\$7,575
815005	BOISE	5	261	\$6,525
815005	BOISE	5	557	\$13,925
815005	BOISE	5	282	\$7,050
814010	BOISE	5	879	\$21,975
814010	BOISE	5	743	\$18,575
816002	BOISE	5	394	\$9,850
816002	BOISE	5	48	\$1,200
514030	BOISE	5	71	\$1,775
514030	BOISE	5	49	\$1,225
514030	BOISE	10	189	\$9,450
514030	BOISE	10	199	\$9,950
514030	BOISE	5	69	\$1,725
Capitol Blvd and Island Ave Pedestrian Crossing	BOISE	8	48	\$1,920
815005	BOISE	5	940	\$23,500
815005	BOISE	5	299	\$7,475

815005	BOISE	5	1278	\$31,950
815005	BOISE	5	19	\$475
815005	BOISE	5	17	\$425
815005	BOISE	5	41	\$1,025
815005	BOISE	5	134	\$3,350
815005	BOISE	5	749	\$18,725
815005	BOISE	5	72	\$1,800
Camas - Orchard to Roosevelt	BOISE	5	343	\$8,575
Camas - Orchard to Roosevelt	BOISE	5	781	\$19,525
Camas - Orchard to Roosevelt	BOISE	5	2468	\$61,700
Camas - Orchard to Roosevelt	BOISE	5	1036	\$25,900
Camas - Orchard to Roosevelt	BOISE	5	185	\$4,625
815001	BOISE	5	303	\$7,575
815001	BOISE	5	288	\$7,200
815001	BOISE	5	290	\$7,250
815001	BOISE	5	277	\$6,925
815001	BOISE	5	276	\$6,900
815001	BOISE	5	466	\$11,650
815001	BOISE	5	320	\$8,000
2016 AERIAL INVENTORY	BOISE	10	899	\$44,950
MI211-02 214015-Eagle Rd Bridge 1029	EAGLE	8	26	\$975
MI211-02\214015-Eagle Rd Bridge 1029	EAGLE	8	62	\$2,325
MI211-02\214015-Eagle Rd Bridge 1029	EAGLE	8	95	\$3,563
514033	EAGLE	5	1825	\$45,625
514033	EAGLE	5	2038	\$50,950
2016 AERIAL INVENTORY	EAGLE	5	937	\$23,425
2016 AERIAL INVENTORY	EAGLE	5	1976	\$49,400
814010	MERIDIAN	5	285	\$7,125
814010	MERIDIAN	5	273	\$6,825

814010	MERIDIAN	5	651	\$16,275
NW 1st, Broadway to Pine	MERIDIAN	5	75	\$1,875
NW 1st, Broadway to Pine	MERIDIAN	5	98	\$2,450
NW 1st, Broadway to Pine	MERIDIAN	5	140	\$3,500
NW 1st, Broadway to Pine	MERIDIAN	5	180	\$4,500
NW 1st, Broadway to Pine	MERIDIAN	5	280	\$7,000
NW 1st, Broadway to Pine	MERIDIAN	5	131	\$3,275
NW 1st, Broadway to Pine	MERIDIAN	5	254	\$6,350
NW 1st, Broadway to Pine	MERIDIAN	5	173	\$4,325
NW 1st, Broadway to Pine	MERIDIAN	5	264	\$6,600
NW 1st, Broadway to Pine	MERIDIAN	5	292	\$7,300
2016 AERIAL INVENTORY	MERIDIAN	5	911	\$22,775

Fiscal Year 2017 ACHD Sidewalk Projects

Project	Jurisdiction	WIDTH (ft)	Length (ft)	Estimated Cost
Jefferson Bridge - 100-215003	BOISE	7	42	\$1,470
Jefferson Bridge - 100-215003	BOISE	7	46	\$1,610
Targee St, Maple Grove Rd to Penninger Dr	BOISE	5	297	\$7,425
Targee St, Maple Grove Rd to Penninger Dr	BOISE	5	804	\$20,100
Targee St, Maple Grove Rd to Penninger Dr	BOISE	5	36	\$900
Targee St, Maple Grove Rd to Penninger Dr	BOISE	5	35	\$875
Targee St, Maple Grove Rd to Penninger Dr	BOISE	5	303	\$7,575

815005	BOISE	5	261	\$6,525
815005	BOISE	5	557	\$13,925
815005	BOISE	5	282	\$7,050
814010	BOISE	5	879	\$21,975
814010	BOISE	5	743	\$18,575
816002	BOISE	5	394	\$9,850
816002	BOISE	5	48	\$1,200
514030	BOISE	5	71	\$1,775
514030	BOISE	5	49	\$1,225
514030	BOISE	10	189	\$9,450
514030	BOISE	10	199	\$9,950
514030	BOISE	5	69	\$1,725
Capitol Blvd and Island Ave Pedestrian Crossing	BOISE	8	48	\$1,920
815005	BOISE	5	940	\$23,500
815005	BOISE	5	299	\$7,475
815005	BOISE	5	1278	\$31,950
815005	BOISE	5	19	\$475
815005	BOISE	5	17	\$425
815005	BOISE	5	41	\$1,025
815005	BOISE	5	134	\$3,350
815005	BOISE	5	749	\$18,725
815005	BOISE	5	72	\$1,800
Camas - Orchard to Roosevelt	BOISE	5	343	\$8,575
Camas - Orchard to Roosevelt	BOISE	5	781	\$19,525
Camas - Orchard to Roosevelt	BOISE	5	2468	\$61,700
Camas - Orchard to Roosevelt	BOISE	5	1036	\$25,900
Camas - Orchard to Roosevelt	BOISE	5	185	\$4,625
815001	BOISE	5	303	\$7,575
815001	BOISE	5	288	\$7,200
815001	BOISE	5	290	\$7,250

815001	BOISE	5	277	\$6,925
815001	BOISE	5	276	\$6,900
815001	BOISE	5	466	\$11,650
815001	BOISE	5	320	\$8,000
2016 AERIAL INVENTORY	BOISE	10	899	\$44,950
MI211-02 214015-Eagle Rd Bridge 1029	EAGLE	8	26	\$975
MI211-02\t214015-Eagle Rd Bridge 1029	EAGLE	8	62	\$2,325
MI211-02\t214015-Eagle Rd Bridge 1029	EAGLE	8	95	\$3,563
514033	EAGLE	5	1825	\$45,625
514033	EAGLE	5	2038	\$50,950
2016 AERIAL INVENTORY	EAGLE	5	937	\$23,425
2016 AERIAL INVENTORY	EAGLE	5	1976	\$49,400
814010	MERIDIAN	5	285	\$7,125
814010	MERIDIAN	5	273	\$6,825
814010	MERIDIAN	5	651	\$16,275
NW 1st, Broadway to Pine	MERIDIAN	5	75	\$1,875
NW 1st, Broadway to Pine	MERIDIAN	5	98	\$2,450
NW 1st, Broadway to Pine	MERIDIAN	5	140	\$3,500
NW 1st, Broadway to Pine	MERIDIAN	5	180	\$4,500
NW 1st, Broadway to Pine	MERIDIAN	5	280	\$7,000
NW 1st, Broadway to Pine	MERIDIAN	5	131	\$3,275
NW 1st, Broadway to Pine	MERIDIAN	5	254	\$6,350
NW 1st, Broadway to Pine	MERIDIAN	5	173	\$4,325
NW 1st, Broadway to Pine	MERIDIAN	5	264	\$6,600
NW 1st, Broadway to Pine	MERIDIAN	5	292	\$7,300
2016 AERIAL INVENTORY	MERIDIAN	5	911	\$22,775

Fiscal Year 2017 Subdivision – Sidewalk

Project	JURISDICTION	WIDTH	Length (ft)	EST COST
SUBDIVISION	ADA COUNTY	5	464	\$11,600
SUBDIVISION	ADA COUNTY	5	1020	\$25,500
SUBDIVISION	ADA COUNTY	5	511	\$12,775
SUBDIVISION	ADA COUNTY	5	1576	\$39,400
SUBDIVISION	ADA COUNTY	5	12895	\$322,375
SUBDIVISION	ADA COUNTY	5	1040	\$26,000
SUBDIVISION	ADA COUNTY	5	4106	\$102,650
SUBDIVISION	ADA COUNTY	5	981	\$24,525
SUBDIVISION	ADA COUNTY	5	1094	\$27,350
SUBDIVISION	ADA COUNTY	5	715	\$17,875
SUBDIVISION	ADA COUNTY	5	918	\$22,950
SUBDIVISION	ADA COUNTY	5	1632	\$40,800
SUBDIVISION	ADA COUNTY	5	4437	\$110,925
SUBDIVISION	ADA COUNTY	5	4877	\$121,925
SUBDIVISION	ADA COUNTY	5	7592	\$189,800
SUBDIVISION	ADA COUNTY	5	2488	\$62,200
SUBDIVISION	ADA COUNTY	5	1283	\$32,075
SUBDIVISION	ADA COUNTY	5	3009	\$75,225
SUBDIVISION	ADA COUNTY	5	1963	\$49,075
SUBDIVISION	ADA COUNTY	5	1063	\$26,575
SUBDIVISION	ADA COUNTY	5	4557	\$113,925
SUBDIVISION	ADA COUNTY	5	2840	\$71,000
SUBDIVISION	ADA COUNTY	5	5670	\$141,750
SUBDIVISION	ADA COUNTY	5	1203	\$30,075
SUBDIVISION	ADA COUNTY	5	1447	\$36,175
SUBDIVISION	ADA COUNTY	5	588	\$14,700
SUBDIVISION	ADA COUNTY	5	217	\$5,425
SUBDIVISION	ADA COUNTY	5	2335	\$58,375
SUBDIVISION	ADA COUNTY	5	5905	\$147,625
SUBDIVISION	ADA COUNTY	5	693	\$17,325
SUBDIVISION	ADA COUNTY	5	12	\$300
SUBDIVISION	ADA COUNTY	5	471	\$11,775
SUBDIVISION	ADA COUNTY	5	434	\$10,850

SUBDIVISION	ADA COUNTY	5	1140	\$28,500
SUBDIVISION	ADA COUNTY	5	354	\$8,850
SUBDIVISION	ADA COUNTY	5	820	\$20,500
SUBDIVISION	ADA COUNTY	5	3240	\$81,000
SUBDIVISION	ADA COUNTY	5	58	\$1,450
SUBDIVISION	ADA COUNTY	5	719	\$17,975
SUBDIVISION	ADA COUNTY	5	1386	\$34,650
SUBDIVISION	ADA COUNTY	5	471	\$11,775
SUBDIVISION	ADA COUNTY	5	460	\$11,500
SUBDIVISION	ADA COUNTY	5	7	\$175
SUBDIVISION	ADA COUNTY	5	399	\$9,975
SUBDIVISION	ADA COUNTY	5	486	\$12,150
SUBDIVISION	ADA COUNTY	5	155	\$3,875
SUBDIVISION	ADA COUNTY	5	143	\$3,575
SUBDIVISION	ADA COUNTY	5	1294	\$32,350
SUBDIVISION	ADA COUNTY	5	867	\$21,675
SUBDIVISION	ADA COUNTY	5	1595	\$39,875
SUBDIVISION	ADA COUNTY	5	1262	\$31,550
SUBDIVISION	ADA COUNTY	5	636	\$15,900
SUBDIVISION	ADA COUNTY	5	1625	\$40,625
SUBDIVISION	ADA COUNTY	5	7796	\$194,900
SUBDIVISION	ADA COUNTY	5	1785	\$44,625
SUBDIVISION	ADA COUNTY	5	121	\$3,025
SUBDIVISION	ADA COUNTY	5	125	\$3,125
SUBDIVISION	ADA COUNTY	5	700	\$17,500
SUBDIVISION	ADA COUNTY	5	216	\$5,400
SUBDIVISION	ADA COUNTY	5	263	\$6,575
SUBDIVISION	ADA COUNTY	5	1762	\$44,050
SUBDIVISION	ADA COUNTY	5	297	\$7,425
SUBDIVISION	BOISE	5	1018	\$25,450
SUBDIVISION	BOISE	5	784	\$19,600
SUBDIVISION	BOISE	5	776	\$19,400
SUBDIVISION	BOISE	5	1196	\$29,900
SUBDIVISION	BOISE	5	1279	\$31,975
SUBDIVISION	BOISE	5	1118	\$27,950
SUBDIVISION	BOISE	5	2707	\$67,675

SUBDIVISION	BOISE	5	1017	\$25,425
SUBDIVISION	BOISE	5	1000	\$25,000
SUBDIVISION	BOISE	5	1196	\$29,900
SUBDIVISION	BOISE	5	408	\$10,200
SUBDIVISION	BOISE	5	318	\$7,950
SUBDIVISION	BOISE	5	1450	\$36,250
SUBDIVISION	BOISE	5	3108	\$77,700
SUBDIVISION	BOISE	5	1993	\$49,825
SUBDIVISION	BOISE	5	732	\$18,300
SUBDIVISION	BOISE	5	830	\$20,750
SUBDIVISION	BOISE	5	2107	\$52,675
SUBDIVISION	BOISE	5	337	\$8,425
SUBDIVISION	BOISE	5	360	\$9,000
SUBDIVISION	BOISE	5	641	\$16,025
SUBDIVISION	BOISE	5	1015	\$25,375
SUBDIVISION	BOISE	5	2851	\$71,275
SUBDIVISION	BOISE	5	7136	\$178,400
SUBDIVISION	BOISE	5	1411	\$35,275
SUBDIVISION	BOISE	5	1105	\$27,625
SUBDIVISION	BOISE	5	5675	\$141,875
SUBDIVISION	BOISE	5	1880	\$47,000
SUBDIVISION	BOISE	5	3979	\$99,475
SUBDIVISION	BOISE	5	3060	\$76,500
SUBDIVISION	BOISE	5	727	\$18,175
SUBDIVISION	BOISE	5	642	\$16,050
SUBDIVISION	BOISE	5	1041	\$26,025
SUBDIVISION	BOISE	5	850	\$21,250
SUBDIVISION	BOISE	5	1739	\$43,475
SUBDIVISION	BOISE	5	1516	\$37,900
SUBDIVISION	BOISE	5	327	\$8,175
SUBDIVISION	BOISE	5	52	\$1,300
SUBDIVISION	BOISE	5	22	\$550
SUBDIVISION	BOISE	5	59	\$1,475
SUBDIVISION	BOISE	5	16	\$400
SUBDIVISION	BOISE	5	41	\$1,025
SUBDIVISION	BOISE	5	28	\$700

SUBDIVISION	BOISE	5	23	\$575
SUBDIVISION	BOISE	5	29	\$725
SUBDIVISION	BOISE	5	52	\$1,300
SUBDIVISION	BOISE	5	26	\$650
SUBDIVISION	BOISE	5	32	\$800
SUBDIVISION	BOISE	5	140	\$3,500
SUBDIVISION	BOISE	5	8	\$200
SUBDIVISION	BOISE	5	904	\$22,600
SUBDIVISION	BOISE	5	492	\$12,300
SUBDIVISION	BOISE	5	14	\$350
SUBDIVISION	BOISE	5	782	\$19,550
SUBDIVISION	BOISE	5	987	\$24,675
SUBDIVISION	BOISE	5	1598	\$39,950
SUBDIVISION	BOISE	5	861	\$21,525
SUBDIVISION	BOISE	5	500	\$12,500
SUBDIVISION	BOISE	5	1584	\$39,600
SUBDIVISION	BOISE	5	2013	\$50,325
SUBDIVISION	BOISE	5	718	\$17,950
SUBDIVISION	BOISE	5	158	\$3,950
SUBDIVISION	BOISE	5	934	\$23,350
SUBDIVISION	EAGLE	5	2029	\$50,725
SUBDIVISION	EAGLE	5	2102	\$52,550
SUBDIVISION	EAGLE	5	1764	\$44,100
SUBDIVISION	EAGLE	5	1416	\$35,400
SUBDIVISION	EAGLE	5	1967	\$49,175
SUBDIVISION	EAGLE	5	2155	\$53,875
SUBDIVISION	EAGLE	5	1125	\$28,125
SUBDIVISION	EAGLE	5	19	\$475
SUBDIVISION	EAGLE	5	4323	\$108,075
SUBDIVISION	EAGLE	5	6	\$150
SUBDIVISION	EAGLE	5	6	\$150
SUBDIVISION	EAGLE	5	2018	\$50,450
SUBDIVISION	EAGLE	5	772	\$19,300
SUBDIVISION	EAGLE	5	382	\$9,550
SUBDIVISION	EAGLE	5	996	\$24,900
SUBDIVISION	EAGLE	5	1042	\$26,050

SUBDIVISION	EAGLE	5	10328	\$258,200
SUBDIVISION	EAGLE	5	2921	\$73,025
SUBDIVISION	EAGLE	5	8164	\$204,100
SUBDIVISION	EAGLE	5	2964	\$74,100
SUBDIVISION	EAGLE	5	2108	\$52,700
SUBDIVISION	EAGLE	5	2402	\$60,050
SUBDIVISION	EAGLE	5	1841	\$46,025
SUBDIVISION	EAGLE	5	1935	\$48,375
SUBDIVISION	EAGLE	5	990	\$24,750
SUBDIVISION	EAGLE	5	1280	\$32,000
SUBDIVISION	EAGLE	5	198	\$4,950
SUBDIVISION	EAGLE	5	1156	\$28,900
SUBDIVISION	EAGLE	5	3776	\$94,400
SUBDIVISION	EAGLE	5	1471	\$36,775
SUBDIVISION	EAGLE	5	637	\$15,925
SUBDIVISION	EAGLE	5	1759	\$43,975
SUBDIVISION	EAGLE	5	1467	\$36,675
SUBDIVISION	EAGLE	5	658	\$16,450
SUBDIVISION	EAGLE	5	896	\$22,400
SUBDIVISION	EAGLE	5	627	\$15,675
SUBDIVISION	EAGLE	5	1453	\$36,325
SUBDIVISION	EAGLE	5	688	\$17,200
SUBDIVISION	EAGLE	5	951	\$23,775
SUBDIVISION	EAGLE	5	595	\$14,875
SUBDIVISION	EAGLE	5	846	\$21,150
SUBDIVISION	EAGLE	5	592	\$14,800
SUBDIVISION	EAGLE	5	5145	\$128,625
SUBDIVISION	EAGLE	5	1454	\$36,350
SUBDIVISION	GARDEN CITY	5	147	\$3,675
SUBDIVISION	KUNA	5	1206	\$30,150
SUBDIVISION	KUNA	5	1070	\$26,750
SUBDIVISION	KUNA	5	7	\$175
SUBDIVISION	KUNA	5	930	\$23,250
SUBDIVISION	KUNA	5	1901	\$47,525
SUBDIVISION	KUNA	5	3141	\$78,525
SUBDIVISION	KUNA	5	10	\$250

SUBDIVISION	KUNA	5	911	\$22,775
SUBDIVISION	KUNA	5	977	\$24,425
SUBDIVISION	KUNA	5	34	\$850
SUBDIVISION	KUNA	5	3800	\$95,000
SUBDIVISION	KUNA	5	839	\$20,975
SUBDIVISION	KUNA	5	1603	\$40,075
SUBDIVISION	KUNA	5	322	\$8,050
SUBDIVISION	KUNA	5	1644	\$41,100
SUBDIVISION	KUNA	5	3777	\$94,425
SUBDIVISION	KUNA	5	1918	\$47,950
SUBDIVISION	KUNA	5	1122	\$28,050
SUBDIVISION	KUNA	5	1340	\$33,500
SUBDIVISION	KUNA	5	1330	\$33,250
SUBDIVISION	KUNA	5	3804	\$95,100
SUBDIVISION	KUNA	5	583	\$14,575
SUBDIVISION	KUNA	5	1303	\$32,575
SUBDIVISION	KUNA	5	350	\$8,750
SUBDIVISION	KUNA	5	519	\$12,975
SUBDIVISION	KUNA	5	563	\$14,075
SUBDIVISION	KUNA	5	2904	\$72,600
SUBDIVISION	MERIDIAN	5	1267	\$31,675
SUBDIVISION	MERIDIAN	5	904	\$22,600
SUBDIVISION	MERIDIAN	5	19	\$475
SUBDIVISION	MERIDIAN	5	19	\$475
SUBDIVISION	MERIDIAN	5	898	\$22,450
SUBDIVISION	MERIDIAN	5	1998	\$49,950
SUBDIVISION	MERIDIAN	5	2110	\$52,750
SUBDIVISION	MERIDIAN	5	2973	\$74,325
SUBDIVISION	MERIDIAN	5	110	\$2,750
SUBDIVISION	MERIDIAN	5	898	\$22,450
SUBDIVISION	MERIDIAN	5	1513	\$37,825
SUBDIVISION	MERIDIAN	5	572	\$14,300
SUBDIVISION	MERIDIAN	5	33	\$825
SUBDIVISION	MERIDIAN	5	45	\$1,125
SUBDIVISION	MERIDIAN	5	31	\$775
SUBDIVISION	MERIDIAN	5	1242	\$31,050

SUBDIVISION	MERIDIAN	5	1243	\$31,075
SUBDIVISION	MERIDIAN	5	4361	\$109,025
SUBDIVISION	MERIDIAN	5	1192	\$29,800
SUBDIVISION	MERIDIAN	5	1339	\$33,475
SUBDIVISION	MERIDIAN	5	1647	\$41,175
SUBDIVISION	MERIDIAN	5	276	\$6,900
SUBDIVISION	MERIDIAN	5	152	\$3,800
SUBDIVISION	MERIDIAN	5	1	\$25
SUBDIVISION	MERIDIAN	5	593	\$14,825
SUBDIVISION	MERIDIAN	5	25	\$625
SUBDIVISION	MERIDIAN	5	715	\$17,875
SUBDIVISION	MERIDIAN	5	789	\$19,725
SUBDIVISION	MERIDIAN	5	1657	\$41,425
SUBDIVISION	MERIDIAN	5	1828	\$45,700
SUBDIVISION	MERIDIAN	5	736	\$18,400
SUBDIVISION	MERIDIAN	5	2178	\$54,450
SUBDIVISION	MERIDIAN	5	700	\$17,500
SUBDIVISION	MERIDIAN	5	1544	\$38,600
SUBDIVISION	MERIDIAN	5	3295	\$82,375
SUBDIVISION	MERIDIAN	5	772	\$19,300
SUBDIVISION	MERIDIAN	5	1142	\$28,550
SUBDIVISION	MERIDIAN	5	7969	\$199,225
SUBDIVISION	MERIDIAN	5	1657	\$41,425
SUBDIVISION	MERIDIAN	5	19	\$475
SUBDIVISION	MERIDIAN	5	1629	\$40,725
SUBDIVISION	MERIDIAN	5	2399	\$59,975
SUBDIVISION	MERIDIAN	5	1466	\$36,650
SUBDIVISION	MERIDIAN	5	1422	\$35,550
SUBDIVISION	MERIDIAN	5	1230	\$30,750
SUBDIVISION	MERIDIAN	5	1673	\$41,825
SUBDIVISION	MERIDIAN	5	1765	\$44,125
SUBDIVISION	MERIDIAN	5	1933	\$48,325
SUBDIVISION	MERIDIAN	5	1820	\$45,500
SUBDIVISION	MERIDIAN	5	2540	\$63,500
SUBDIVISION	MERIDIAN	5	2119	\$52,975
SUBDIVISION	MERIDIAN	5	167	\$4,175

SUBDIVISION	MERIDIAN	5	223	\$5,575
SUBDIVISION	MERIDIAN	5	3162	\$79,050
SUBDIVISION	MERIDIAN	5	1141	\$28,525
SUBDIVISION	MERIDIAN	5	8517	\$212,925
SUBDIVISION	MERIDIAN	5	2286	\$57,150
SUBDIVISION	MERIDIAN	5	5088	\$127,200
SUBDIVISION	MERIDIAN	5	1174	\$29,350
SUBDIVISION	MERIDIAN	5	13	\$325
SUBDIVISION	MERIDIAN	5	844	\$21,100
SUBDIVISION	MERIDIAN	5	2942	\$73,550
SUBDIVISION	MERIDIAN	5	1144	\$28,600
SUBDIVISION	MERIDIAN	5	362	\$9,050
SUBDIVISION	MERIDIAN	5	884	\$22,100
SUBDIVISION	MERIDIAN	5	1497	\$37,425
SUBDIVISION	MERIDIAN	5	1482	\$37,050
SUBDIVISION	MERIDIAN	5	9	\$225
SUBDIVISION	MERIDIAN	5	1100	\$27,500
SUBDIVISION	MERIDIAN	5	652	\$16,300
SUBDIVISION	MERIDIAN	5	634	\$15,850
SUBDIVISION	MERIDIAN	5	2020	\$50,500
SUBDIVISION	MERIDIAN	5	1488	\$37,200
SUBDIVISION	MERIDIAN	5	2050	\$51,250
SUBDIVISION	MERIDIAN	5	2997	\$74,925
SUBDIVISION	MERIDIAN	5	16	\$400
SUBDIVISION	MERIDIAN	5	806	\$20,150
SUBDIVISION	MERIDIAN	5	515	\$12,875
SUBDIVISION	MERIDIAN	5	54	\$1,350
SUBDIVISION	MERIDIAN	5	929	\$23,225
SUBDIVISION	MERIDIAN	5	622	\$15,550
SUBDIVISION	MERIDIAN	5	2110	\$52,750
SUBDIVISION	MERIDIAN	5	628	\$15,700
SUBDIVISION	MERIDIAN	5	281	\$7,025
SUBDIVISION	MERIDIAN	5	609	\$15,225
SUBDIVISION	MERIDIAN	5	338	\$8,450
SUBDIVISION	MERIDIAN	5	1089	\$27,225
SUBDIVISION	MERIDIAN	5	2019	\$50,475

SUBDIVISION	MERIDIAN	5	812	\$20,300
SUBDIVISION	MERIDIAN	5	1399	\$34,975
SUBDIVISION	MERIDIAN	5	468	\$11,700
SUBDIVISION	MERIDIAN	5	2557	\$63,925
SUBDIVISION	MERIDIAN	5	527	\$13,175
SUBDIVISION	MERIDIAN	5	2434	\$60,850
SUBDIVISION	MERIDIAN	5	1453	\$36,325
SUBDIVISION	MERIDIAN	5	578	\$14,450
SUBDIVISION	MERIDIAN	5	1626	\$40,650
SUBDIVISION	MERIDIAN	5	546	\$13,650
SUBDIVISION	MERIDIAN	5	494	\$12,350
SUBDIVISION	MERIDIAN	5	176	\$4,400
SUBDIVISION	MERIDIAN	5	835	\$20,875
SUBDIVISION	MERIDIAN	5	753	\$18,825
SUBDIVISION	MERIDIAN	5	660	\$16,500
SUBDIVISION	MERIDIAN	5	744	\$18,600
SUBDIVISION	MERIDIAN	5	978	\$24,450
SUBDIVISION	MERIDIAN	5	4178	\$104,450
SUBDIVISION	MERIDIAN	5	1012	\$25,300
SUBDIVISION	MERIDIAN	5	1861	\$46,525
SUBDIVISION	MERIDIAN	5	1331	\$33,275
SUBDIVISION	MERIDIAN	5	5197	\$129,925
SUBDIVISION	MERIDIAN	5	316	\$7,900
SUBDIVISION	MERIDIAN	5	234	\$5,850
SUBDIVISION	MERIDIAN	5	172	\$4,300
SUBDIVISION	MERIDIAN	5	258	\$6,450
SUBDIVISION	MERIDIAN	5	322	\$8,050
SUBDIVISION	MERIDIAN	5	1148	\$28,700
SUBDIVISION	MERIDIAN	5	617	\$15,425
SUBDIVISION	MERIDIAN	5	690	\$17,250
SUBDIVISION	MERIDIAN	5	163	\$4,075
SUBDIVISION	MERIDIAN	5	285	\$7,125
SUBDIVISION	MERIDIAN	5	159	\$3,975
SUBDIVISION	MERIDIAN	5	283	\$7,075
SUBDIVISION	MERIDIAN	5	1789	\$44,725
SUBDIVISION	MERIDIAN	5	301	\$7,525

SUBDIVISION	MERIDIAN	5	301	\$7,525
SUBDIVISION	MERIDIAN	5	798	\$19,950
SUBDIVISION	MERIDIAN	5	133	\$3,325
SUBDIVISION	MERIDIAN	5	320	\$8,000
SUBDIVISION	MERIDIAN	5	1446	\$36,150
SUBDIVISION	MERIDIAN	5	429	\$10,725
SUBDIVISION	MERIDIAN	5	2152	\$53,800
SUBDIVISION	STAR	5	2841	\$71,025
SUBDIVISION	STAR	5	2989	\$74,725
SUBDIVISION	STAR	5	5719	\$142,975
SUBDIVISION	STAR	5	1448	\$36,200
SUBDIVISION	STAR	5	1291	\$32,275
SUBDIVISION	STAR	5	12	\$300
SUBDIVISION	STAR	5	730	\$18,250
SUBDIVISION	STAR	5	835	\$20,875
SUBDIVISION	STAR	5	4192	\$104,800
SUBDIVISION	STAR	5	706	\$17,650
SUBDIVISION	STAR	5	1805	\$45,125
SUBDIVISION	STAR	5	1	\$25
SUBDIVISION	STAR	5	1135	\$28,375
SUBDIVISION	STAR	5	1070	\$26,750
SUBDIVISION	STAR	5	985	\$24,625
SUBDIVISION	STAR	5	20	\$500
SUBDIVISION	STAR	5	224	\$5,600

Appendix B- Pedestrian Ramps

Fiscal Year 2017 Sidewalk Repair- Pedestrian Ramps

PROJ_TYPE	RampCount	RampWork	PROJ_DESC	CITY
ACHD PROJECT	1	NEW INSTALL	Camas - Orchard to Roosevelt	BOISE
ACHD PROJECT	1	NEW INSTALL	Camas - Orchard to Roosevelt	BOISE
ACHD PROJECT	1	NEW INSTALL	Camas - Orchard to Roosevelt	BOISE
ACHD PROJECT	1	NEW INSTALL	Camas - Orchard to Roosevelt	BOISE
ACHD PROJECT	1	NEW INSTALL	Camas - Orchard to Roosevelt	BOISE
ACHD PROJECT	1	NEW INSTALL	Camas - Orchard to Roosevelt	BOISE
ACHD PROJECT	1	REPLACED	2017 Arterial and Collector Capital Maintenance	BOISE
ACHD PROJECT	1	REPLACED	2017 Arterial and Collector Capital Maintenance	BOISE
ACHD PROJECT	2	REPLACED	2017 Arterial and Collector Capital Maintenance	BOISE
ACHD PROJECT	2	REPLACED	2017 Arterial and Collector Capital Maintenance	BOISE
ACHD PROJECT	2	REPLACED	2017 Arterial and Collector Capital Maintenance	BOISE
ACHD PROJECT	2	REPLACED	2017 Arterial and Collector Capital Maintenance	BOISE
ACHD	1	REPLACED	2017 Arterial and	BOISE

PROJECT			Collector Capital Maintenance	
ACHD PROJECT	1	REPLACED	2017 Arterial and Collector Capital Maintenance	BOISE
ACHD PROJECT	1	NEW INSTALL	2017 Arterial and Collector Capital Maintenance	BOISE
ACHD PROJECT	2	REPLACED	2017 Arterial and Collector Capital Maintenance	BOISE
ACHD PROJECT	2	REPLACED	2017 Arterial and Collector Capital Maintenance	BOISE
ACHD PROJECT	1	REPLACED	2017 Arterial and Collector Capital Maintenance	BOISE
ACHD PROJECT	2	REPLACED	2017 Arterial and Collector Capital Maintenance	BOISE
ACHD PROJECT	2	REPLACED	2017 Arterial and Collector Capital Maintenance	BOISE
ACHD PROJECT	2	REPLACED	2017 Arterial and Collector Capital Maintenance	BOISE
ACHD PROJECT	2	REPLACED	2017 Arterial and Collector Capital Maintenance	BOISE
ACHD PROJECT	1	REPLACED	2017 Arterial and Collector Capital Maintenance	BOISE
ACHD PROJECT	1	REPLACED	2017 Arterial and Collector Capital Maintenance	BOISE
ACHD PROJECT	1	REPLACED	2017 Arterial and Collector Capital	BOISE

			Maintenance	
ACHD PROJECT	1	REPLACED	2017 Arterial and Collector Capital Maintenance	BOISE
ACHD PROJECT	1	REPLACED	2017 Arterial and Collector Capital Maintenance	BOISE
ACHD PROJECT	1	REPLACED	2017 Arterial and Collector Capital Maintenance	BOISE
ACHD PROJECT	1	REPLACED	2017 Arterial and Collector Capital Maintenance	BOISE
ACHD PROJECT	1	REPLACED	2017 Arterial and Collector Capital Maintenance	BOISE
ACHD PROJECT	1	REPLACED	2017 Arterial and Collector Capital Maintenance	BOISE
ACHD PROJECT	1	REPLACED	2017 Arterial and Collector Capital Maintenance	BOISE
ACHD PROJECT	1	REPLACED	2017 Arterial and Collector Capital Maintenance	BOISE
ACHD PROJECT	1	REPLACED	2017 Arterial and Collector Capital Maintenance	BOISE
ACHD PROJECT	1	REPLACED	2017 Arterial and Collector Capital Maintenance	BOISE
ACHD PROJECT	1	REPLACED	2017 Arterial and Collector Capital Maintenance	BOISE
ACHD PROJECT	1	REPLACED	2017 Arterial and Collector Capital Maintenance	BOISE
ACHD PROJECT	1	REPLACED	2017 Arterial and Collector Capital Maintenance	BOISE

ACHD PROJECT	1	REPLACED	2017 Arterial and Collector Capital Maintenance	BOISE
ACHD PROJECT	2	REPLACED	2017 Arterial and Collector Capital Maintenance	BOISE
ACHD PROJECT	2	REPLACED	2017 Arterial and Collector Capital Maintenance	BOISE
ACHD PROJECT	2	REPLACED	2017 Arterial and Collector Capital Maintenance	BOISE
ACHD PROJECT	1	REPLACED	2017 Arterial and Collector Capital Maintenance	BOISE
ACHD PROJECT	1	REPLACED	2017 Arterial and Collector Capital Maintenance	BOISE
ACHD PROJECT	2	NEW INSTALL	2017 Safe Sidewalk/Misc Concrete	BOISE
ACHD PROJECT	2	NEW INSTALL	2017 Safe Sidewalk/Misc Concrete	BOISE
ACHD PROJECT	2	NEW INSTALL	2017 Safe Sidewalk/Misc Concrete	BOISE
ACHD PROJECT	2	NEW INSTALL	2017 Safe Sidewalk/Misc Concrete	BOISE
ACHD PROJECT	2	REPLACED	2017 Safe Sidewalk/Misc Concrete	BOISE
ACHD PROJECT	2	NEW INSTALL	2017 Safe Sidewalk/Misc Concrete	BOISE
ACHD PROJECT	2	NEW INSTALL	2017 Safe Sidewalk/Misc Concrete	BOISE
ACHD PROJECT	2	NEW INSTALL	2017 Safe Sidewalk/Misc Concrete	BOISE
ACHD PROJECT	2	REPLACED	2017 Safe Sidewalk/Misc Concrete	BOISE
ACHD	2	REPLACED	2017 Safe Sidewalk/Misc	BOISE

PROJECT			Concrete	
ACHD PROJECT	2	REPLACED	2017 Safe Sidewalk/Misc Concrete	BOISE
ACHD PROJECT	2	REPLACED	2017 Safe Sidewalk/Misc Concrete	BOISE
ACHD PROJECT	2	REPLACED	2017 Safe Sidewalk/Misc Concrete	BOISE
ACHD PROJECT	2	REPLACED	2017 Safe Sidewalk/Misc Concrete	BOISE
ACHD PROJECT	2	REPLACED	2017 Safe Sidewalk/Misc Concrete	BOISE
ACHD PROJECT	2	REPLACED	2017 Safe Sidewalk/Misc Concrete	BOISE
ACHD PROJECT	2	REPLACED	2017 Safe Sidewalk/Misc Concrete	BOISE
ACHD PROJECT	2	NEW INSTALL	2017 Safe Sidewalk/Misc Concrete	BOISE
ACHD PROJECT	2	REPLACED	2017 Safe Sidewalk/Misc Concrete	BOISE
ACHD PROJECT	2	REPLACED	2017 Safe Sidewalk/Misc Concrete	BOISE
ACHD PROJECT	2	REPLACED	2017 Safe Sidewalk/Misc Concrete	BOISE
ACHD PROJECT	1	REPLACED	2017 Safe Sidewalk/Misc Concrete	BOISE
ACHD PROJECT	1	REPLACED	2017 Safe Sidewalk/Misc Concrete	BOISE
ACHD PROJECT	1	NEW INSTALL	2016 AERIAL INVENTORY	MERIDIAN
ACHD PROJECT	1	NEW INSTALL	2016 AERIAL INVENTORY	MERIDIAN
ACHD PROJECT	1	NEW INSTALL	2017 Arterial and Collector Capital Maintenance	MERIDIAN
ACHD PROJECT	1	NEW INSTALL	2017 Arterial and Collector Capital Maintenance	MERIDIAN
ACHD PROJECT	1	NEW INSTALL	2017 Arterial and Collector Capital	MERIDIAN

			Maintenance	
ACHD PROJECT	1	NEW INSTALL	2017 Arterial and Collector Capital Maintenance	MERIDIAN
ACHD PROJECT	1	NEW INSTALL	2017 Arterial and Collector Capital Maintenance	MERIDIAN
ACHD PROJECT	1	NEW INSTALL	West 1st St, Broadway Ave to Pine Ave	MERIDIAN
ACHD PROJECT	1	NEW INSTALL	West 1st St, Broadway Ave to Pine Ave	MERIDIAN
ACHD PROJECT	1	NEW INSTALL	West 1st St, Broadway Ave to Pine Ave	MERIDIAN
ACHD PROJECT	1	NEW INSTALL	West 1st St, Broadway Ave to Pine Ave	MERIDIAN
ACHD PROJECT	1	NEW INSTALL	West 1st St, Broadway Ave to Pine Ave	MERIDIAN
ACHD PROJECT	1	NEW INSTALL	West 1st St, Broadway Ave to Pine Ave	MERIDIAN
ACHD PROJECT	1	NEW INSTALL	West 1st St, Broadway Ave to Pine Ave	MERIDIAN
ACHD PROJECT	1	REPLACED	West 1st St, Broadway Ave to Pine Ave	MERIDIAN
ACHD PROJECT	1	REPLACED	West 1st St, Broadway Ave to Pine Ave	MERIDIAN
ACHD PROJECT	1	REPLACED	West 1st St, Broadway Ave to Pine Ave	MERIDIAN
ACHD PROJECT	2	REPLACED	814010	MERIDIAN
ACHD PROJECT	1	NEW INSTALL	814010	MERIDIAN
ACHD PROJECT	1	NEW INSTALL	814010	MERIDIAN
ACHD PROJECT	2	REPLACED	814010	MERIDIAN
ACHD PROJECT	2	REPLACED	814010	MERIDIAN

ACHD PROJECT	1	REPLACED	814010	MERIDIAN
ACHD PROJECT	2	REPLACED	514033	EAGLE
ACHD PROJECT	2	NEW INSTALL	514033	EAGLE
ACHD PROJECT	2	NEW INSTALL	514033	EAGLE
ACHD PROJECT	2	REPLACED	514033	EAGLE
ACHD PROJECT	1	NEW INSTALL	514033	EAGLE
ACHD PROJECT	1	REPLACED	514033	EAGLE
ACHD PROJECT	2	NEW INSTALL	2017 Arterial and Collector Capital Maintenance	EAGLE
ACHD PROJECT	1	REPLACED	2017 Arterial and Collector Capital Maintenance	EAGLE
ACHD PROJECT	1	REPLACED	2017 Arterial and Collector Capital Maintenance	EAGLE
ACHD PROJECT	1	REPLACED	2017 Arterial and Collector Capital Maintenance	EAGLE
ACHD PROJECT	1	REPLACED	2017 Arterial and Collector Capital Maintenance	EAGLE
ACHD PROJECT	1	REPLACED	2017 Arterial and Collector Capital Maintenance	EAGLE
ACHD PROJECT	1	REPLACED	2017 Arterial and Collector Capital Maintenance	EAGLE
ACHD PROJECT	1	REPLACED	2017 Arterial and Collector Capital Maintenance	EAGLE
ACHD PROJECT	1	NEW INSTALL	2017 Arterial and Collector Capital	EAGLE

			Maintenance	
ACHD PROJECT	1	REPLACED	2017 Arterial and Collector Capital Maintenance	EAGLE
ACHD PROJECT	1	REPLACED	2017 Arterial and Collector Capital Maintenance	EAGLE
ACHD PROJECT	1	REPLACED	2017 Arterial and Collector Capital Maintenance	EAGLE
ACHD PROJECT	1	REPLACED	Lake Hazel Rd Reclaim, Five Mile Rd to Maple Grove Rd	ADA COUNTY
ACHD PROJECT	1	REPLACED	Lake Hazel Rd Reclaim, Five Mile Rd to Maple Grove Rd	ADA COUNTY
ACHD PROJECT	1	NEW INSTALL	2016 AERIAL INVENTORY	ADA COUNTY
ACHD PROJECT	1	REPLACED	Lake Hazel Rd Reclaim, Five Mile Rd to Maple Grove Rd	ADA COUNTY
ACHD PROJECT	1	REPLACED	Lake Hazel Rd Reclaim, Five Mile Rd to Maple Grove Rd	ADA COUNTY
ACHD PROJECT	1	REPLACED	Lake Hazel Rd Reclaim, Five Mile Rd to Maple Grove Rd	ADA COUNTY
ACHD PROJECT	1	REPLACED	Lake Hazel Rd Reclaim, Five Mile Rd to Maple Grove Rd	ADA COUNTY

SUBDIVISION	1	NEW INSTALL	BARBER JUNCTION	BOISE
SUBDIVISION	1	NEW INSTALL	BARBER JUNCTION	BOISE
SUBDIVISION	1	NEW INSTALL	BARBER JUNCTION	BOISE
SUBDIVISION	1	NEW INSTALL	BARBERVALLEY TOWNHOMES NO 04	BOISE
SUBDIVISION	1	NEW INSTALL	BARBERVALLEY TOWNHOMES NO 04	BOISE
SUBDIVISION	1	NEW INSTALL	BOULDER HEIGHTS ESTATES NO 07	BOISE
SUBDIVISION	1	NEW INSTALL	BOULDER HEIGHTS ESTATES NO 07	BOISE
SUBDIVISION	1	NEW INSTALL	DIAMANTE	BOISE
SUBDIVISION	1	NEW INSTALL	DIAMANTE	BOISE
SUBDIVISION	1	NEW INSTALL	DIAMANTE	BOISE
SUBDIVISION	1	NEW INSTALL	DIAMANTE	BOISE
SUBDIVISION	1	NEW INSTALL	DIAMANTE	BOISE
SUBDIVISION	1	NEW INSTALL	DIAMANTE	BOISE
SUBDIVISION	1	NEW INSTALL	DIAMANTE	BOISE
SUBDIVISION	1	NEW INSTALL	EASTVALLEY NO 03	BOISE
SUBDIVISION	1	NEW INSTALL	EASTVALLEY NO 03	BOISE
SUBDIVISION	2	NEW INSTALL	EYRIE CANYON NO 09	BOISE
SUBDIVISION	2	NEW INSTALL	EYRIE CANYON NO 09	BOISE
SUBDIVISION	1	NEW	EYRIE CANYON NO 09	BOISE

		INSTALL		
SUBDIVISION	1	NEW INSTALL	EYRIE CANYON NO 09	BOISE
SUBDIVISION	2	NEW INSTALL	EYRIE CANYON NO 09	BOISE
SUBDIVISION	2	NEW INSTALL	EYRIE CANYON NO 09	BOISE
SUBDIVISION	1	NEW INSTALL	ARROWHEAD RIDGE NO 01	BOISE
SUBDIVISION	1	NEW INSTALL	ARROWHEAD RIDGE NO 01	BOISE
SUBDIVISION	1	NEW INSTALL	EYRIE CANYON NO 08	BOISE
SUBDIVISION	1	NEW INSTALL	EYRIE CANYON NO 08	BOISE
SUBDIVISION	2	NEW INSTALL	EYRIE CANYON NO 08	BOISE
SUBDIVISION	1	NEW INSTALL	FORK SOUTH NO 01	BOISE
SUBDIVISION	1	NEW INSTALL	FORK SOUTH NO 01	BOISE
SUBDIVISION	1	NEW INSTALL	FORK SOUTH NO 01	BOISE
SUBDIVISION	1	NEW INSTALL	FORK SOUTH NO 01	BOISE
SUBDIVISION	1	NEW INSTALL	FORK SOUTH NO 01	BOISE
SUBDIVISION	1	NEW INSTALL	FORK SOUTH NO 01	BOISE
SUBDIVISION	1	NEW INSTALL	FORK SOUTH NO 01	BOISE
SUBDIVISION	1	NEW INSTALL	FORK SOUTH NO 01	BOISE
SUBDIVISION	2	NEW INSTALL	FORK SOUTH NO 01	BOISE
SUBDIVISION	1	NEW INSTALL	HIGHLANDS COVE NO 01	BOISE

SUBDIVISION	1	NEW INSTALL	HIGHLANDS COVE NO 01	BOISE
SUBDIVISION	1	NEW INSTALL	HIGHLANDS UNIT NO 25 THE	BOISE
SUBDIVISION	2	NEW INSTALL	SAXTONS FIRST	BOISE
SUBDIVISION	1	NEW INSTALL	SAXTONS FIRST	BOISE
SUBDIVISION	2	NEW INSTALL	SAXTONS FIRST	BOISE
SUBDIVISION	1	NEW INSTALL	SAXTONS FIRST	BOISE
SUBDIVISION	1	NEW INSTALL	SAXTONS FIRST	BOISE
SUBDIVISION	2	NEW INSTALL	MILLWELL PLACE NO 01	BOISE
SUBDIVISION	1	NEW INSTALL	MILLWELL PLACE NO 01	BOISE
SUBDIVISION	1	NEW INSTALL	MILLWELL PLACE NO 01	BOISE
SUBDIVISION	1	NEW INSTALL	MILLWELL PLACE NO 01	BOISE
SUBDIVISION	1	NEW INSTALL	MILLWELL PLACE NO 01	BOISE
SUBDIVISION	2	NEW INSTALL	YOUNGS MEADOW	BOISE
SUBDIVISION	1	NEW INSTALL	YOUNGS MEADOW	BOISE
SUBDIVISION	1	NEW INSTALL	YOUNGS MEADOW	BOISE
SUBDIVISION	1	NEW INSTALL	YOUNGS MEADOW	BOISE
SUBDIVISION	1	NEW INSTALL	YOUNGS MEADOW	BOISE
SUBDIVISION	2	NEW INSTALL	YOUNGS MEADOW	BOISE
SUBDIVISION	2	NEW	YOUNGS MEADOW	BOISE

		INSTALL		
SUBDIVISION	2	NEW INSTALL	YOUNGS MEADOW	BOISE
SUBDIVISION	1	NEW INSTALL	YOUNGS MEADOW	BOISE
SUBDIVISION	2	NEW INSTALL	YOUNGS MEADOW	BOISE
SUBDIVISION	1	NEW INSTALL	YOUNGS MEADOW	BOISE
SUBDIVISION	1	NEW INSTALL	SMITH F B SENIOR ESTATE	BOISE
SUBDIVISION	1	NEW INSTALL	SMITH F B SENIOR ESTATE	BOISE
SUBDIVISION	1	NEW INSTALL	ODOM ESTATES	BOISE
SUBDIVISION	1	NEW INSTALL	ODOM ESTATES	BOISE
SUBDIVISION	1	NEW INSTALL	EAGLESONS BEATTY AMD	BOISE
SUBDIVISION	1	NEW INSTALL	EAGLESONS BEATTY AMD	BOISE
SUBDIVISION	1	NEW INSTALL	WILD SHAMROCK CENTER	BOISE
SUBDIVISION	1	NEW INSTALL	WILD SHAMROCK CENTER	BOISE
SUBDIVISION	1	NEW INSTALL	WHITE CLOUDS NO 02	BOISE
SUBDIVISION	1	NEW INSTALL	WHITE CLOUDS NO 02	BOISE
SUBDIVISION	1	NEW INSTALL	TABLE ROCK	BOISE
SUBDIVISION	1	NEW INSTALL	TABLE ROCK	BOISE
SUBDIVISION	1	NEW INSTALL	COLSON PLACE	BOISE
SUBDIVISION	1	NEW INSTALL	COLSON PLACE	BOISE

SUBDIVISION	1	NEW INSTALL	CHESLER PARK	BOISE
SUBDIVISION	1	NEW INSTALL	CHESLER PARK	BOISE
SUBDIVISION	1	NEW INSTALL	SMITH ESTATE THIRD	BOISE
SUBDIVISION	1	NEW INSTALL	SMITH ESTATE THIRD	BOISE
SUBDIVISION	1	NEW INSTALL	BOULDER HEIGHTS ESTATES NO 07	BOISE
SUBDIVISION	1	NEW INSTALL	BOULDER HEIGHTS ESTATES NO 07	BOISE
SUBDIVISION	1	NEW INSTALL	BARBERVALLEY TOWNHOMES NO 04	BOISE
SUBDIVISION	1	NEW INSTALL	BARBERVALLEY TOWNHOMES NO 04	BOISE
SUBDIVISION	1	NEW INSTALL	BARBERVALLEY TOWNHOMES NO 04	BOISE
SUBDIVISION	1	NEW INSTALL	BARBERVALLEY TOWNHOMES NO 04	BOISE
SUBDIVISION	1	NEW INSTALL	BELMAR ESTATES NO 02	BOISE
SUBDIVISION	1	NEW INSTALL	BELMAR ESTATES NO 02	BOISE
SUBDIVISION	1	NEW INSTALL	BAINBRIDGE NO 03	MERIDIAN
SUBDIVISION	2	NEW INSTALL	BAINBRIDGE NO 03	MERIDIAN
SUBDIVISION	1	NEW INSTALL	BAINBRIDGE NO 03	MERIDIAN
SUBDIVISION	2	NEW INSTALL	BAINBRIDGE NO 04	MERIDIAN
SUBDIVISION	2	NEW INSTALL	BAINBRIDGE NO 04	MERIDIAN
SUBDIVISION	2	NEW INSTALL	BAINBRIDGE NO 04	MERIDIAN
SUBDIVISION	2	NEW	BAINBRIDGE NO 04	MERIDIAN

		INSTALL		
SUBDIVISION	1	NEW INSTALL	BAINBRIDGE NO 05	MERIDIAN
SUBDIVISION	2	NEW INSTALL	BAINBRIDGE NO 05	MERIDIAN
SUBDIVISION	1	NEW INSTALL	BAINBRIDGE NO 05	MERIDIAN
SUBDIVISION	1	NEW INSTALL	BAINBRIDGE PARK	MERIDIAN
SUBDIVISION	1	NEW INSTALL	BAINBRIDGE PARK	MERIDIAN
SUBDIVISION	1	NEW INSTALL	BAINBRIDGE PARK	MERIDIAN
SUBDIVISION	1	NEW INSTALL	BAINBRIDGE PARK	MERIDIAN
SUBDIVISION	1	NEW INSTALL	BAINBRIDGE PARK	MERIDIAN
SUBDIVISION	1	NEW INSTALL	BAINBRIDGE PARK	MERIDIAN
SUBDIVISION	1	NEW INSTALL	BAINBRIDGE PARK	MERIDIAN
SUBDIVISION	1	NEW INSTALL	BAINBRIDGE PARK	MERIDIAN
SUBDIVISION	1	NEW INSTALL	BAINBRIDGE PARK	MERIDIAN
SUBDIVISION	1	NEW INSTALL	BAINBRIDGE PARK	MERIDIAN
SUBDIVISION	2	NEW INSTALL	BAINBRIDGE PARK	MERIDIAN
SUBDIVISION	1	NEW INSTALL	BAINBRIDGE PARK	MERIDIAN
SUBDIVISION	1	NEW INSTALL	BAINBRIDGE PARK	MERIDIAN
SUBDIVISION	1	NEW INSTALL	BAINBRIDGE PARK	MERIDIAN
SUBDIVISION	1	NEW INSTALL	BAINBRIDGE PARK	MERIDIAN
SUBDIVISION	1	NEW INSTALL	BAINBRIDGE PARK	MERIDIAN

SUBDIVISION	2	NEW INSTALL	BAINBRIDGE PARK	MERIDIAN
SUBDIVISION	1	NEW INSTALL	BAINBRIDGE PARK	MERIDIAN
SUBDIVISION	1	NEW INSTALL	BAINBRIDGE PARK	MERIDIAN
SUBDIVISION	2	NEW INSTALL	BANCROFT SQUARE	MERIDIAN
SUBDIVISION	2	NEW INSTALL	BANCROFT SQUARE	MERIDIAN
SUBDIVISION	2	NEW INSTALL	BANCROFT SQUARE	MERIDIAN
SUBDIVISION	2	NEW INSTALL	BANCROFT SQUARE	MERIDIAN
SUBDIVISION	1	NEW INSTALL	SUTHERLAND FARM NO 02	MERIDIAN
SUBDIVISION	1	NEW INSTALL	SUTHERLAND FARM NO 02	MERIDIAN
SUBDIVISION	2	NEW INSTALL	BRINEGAR PRAIRIE NO 01	MERIDIAN
SUBDIVISION	1	NEW INSTALL	BRINEGAR PRAIRIE NO 01	MERIDIAN
SUBDIVISION	1	NEW INSTALL	BRINEGAR PRAIRIE NO 01	MERIDIAN
SUBDIVISION	1	NEW INSTALL	BRINEGAR PRAIRIE NO 01	MERIDIAN
SUBDIVISION	2	NEW INSTALL	BRINEGAR PRAIRIE NO 01	MERIDIAN
SUBDIVISION	2	NEW INSTALL	BRINEGAR PRAIRIE NO 01	MERIDIAN
SUBDIVISION	1	NEW INSTALL	BRINEGAR PRAIRIE NO 01	MERIDIAN
SUBDIVISION	1	NEW INSTALL	BRINEGAR PRAIRIE NO 01	MERIDIAN
SUBDIVISION	1	NEW INSTALL	BRINEGAR PRAIRIE NO 01	MERIDIAN
SUBDIVISION	1	NEW	CHESTERFIELD NO 04	MERIDIAN

		INSTALL		
SUBDIVISION	1	NEW INSTALL	CHESTERFIELD NO 04	MERIDIAN
SUBDIVISION	2	NEW INSTALL	CHESTERFIELD NO 04	MERIDIAN
SUBDIVISION	1	NEW INSTALL	CHESTERFIELD NO 04	MERIDIAN
SUBDIVISION	1	NEW INSTALL	CHESTERFIELD NO 04	MERIDIAN
SUBDIVISION	2	NEW INSTALL	CHESTERFIELD NO 04	MERIDIAN
SUBDIVISION	1	NEW INSTALL	CHESTERFIELD NO 04	MERIDIAN
SUBDIVISION	1	NEW INSTALL	CHESTERFIELD NO 04	MERIDIAN
SUBDIVISION	2	NEW INSTALL	CHESTERFIELD NO 04	MERIDIAN
SUBDIVISION	2	NEW INSTALL	CASTLEBROOK NO 05	MERIDIAN
SUBDIVISION	2	NEW INSTALL	CASTLEBROOK NO 05	MERIDIAN
SUBDIVISION	2	NEW INSTALL	CHESTERFIELD NO 02	MERIDIAN
SUBDIVISION	2	NEW INSTALL	CHESTERFIELD NO 02	MERIDIAN
SUBDIVISION	2	NEW INSTALL	CHESTERFIELD NO 02	MERIDIAN
SUBDIVISION	2	NEW INSTALL	CHESTERFIELD NO 02	MERIDIAN
SUBDIVISION	1	NEW INSTALL	CHESTERFIELD NO 02	MERIDIAN
SUBDIVISION	1	NEW INSTALL	CHESTERFIELD NO 02	MERIDIAN
SUBDIVISION	1	NEW INSTALL	CHESTERFIELD NO 02	MERIDIAN
SUBDIVISION	1	NEW INSTALL	CHESTERFIELD NO 02	MERIDIAN

SUBDIVISION	1	NEW INSTALL	DECATUR ESTATES NO 02	MERIDIAN
SUBDIVISION	1	NEW INSTALL	DECATUR ESTATES NO 02	MERIDIAN
SUBDIVISION	1	NEW INSTALL	DECATUR ESTATES NO 01	MERIDIAN
SUBDIVISION	1	NEW INSTALL	DECATUR ESTATES NO 01	MERIDIAN
SUBDIVISION	2	NEW INSTALL	DECATUR ESTATES NO 02	MERIDIAN
SUBDIVISION	2	NEW INSTALL	DECATUR ESTATES NO 01	MERIDIAN
SUBDIVISION	2	NEW INSTALL	DECATUR ESTATES NO 02	MERIDIAN
SUBDIVISION	2	NEW INSTALL	DECATUR ESTATES NO 02	MERIDIAN
SUBDIVISION	2	NEW INSTALL	DECATUR ESTATES NO 02	MERIDIAN
SUBDIVISION	2	NEW INSTALL	DECATUR ESTATES NO 02	MERIDIAN
SUBDIVISION	2	NEW INSTALL	DECATUR ESTATES NO 02	MERIDIAN
SUBDIVISION	2	NEW INSTALL	DECATUR ESTATES NO 02	MERIDIAN
SUBDIVISION	1	NEW INSTALL	DECATUR ESTATES NO 01	MERIDIAN
SUBDIVISION	1	NEW INSTALL	DECATUR ESTATES NO 01	MERIDIAN
SUBDIVISION	2	NEW INSTALL	DECATUR ESTATES NO 01	MERIDIAN
SUBDIVISION	1	NEW INSTALL	DECATUR ESTATES NO 01	MERIDIAN
SUBDIVISION	1	NEW INSTALL	DECATUR ESTATES NO 01	MERIDIAN
SUBDIVISION	2	NEW INSTALL	DECATUR ESTATES NO 01	MERIDIAN
SUBDIVISION	1	NEW	GEDDES	MERIDIAN

		INSTALL		
SUBDIVISION	1	NEW INSTALL	GEDDES	MERIDIAN
SUBDIVISION	1	NEW INSTALL	GOLDENGROVE	MERIDIAN
SUBDIVISION	1	NEW INSTALL	GOLDENGROVE	MERIDIAN
SUBDIVISION	1	NEW INSTALL	GOLDENGROVE	MERIDIAN
SUBDIVISION	1	NEW INSTALL	GOLDENGROVE	MERIDIAN
SUBDIVISION	1	NEW INSTALL	GOLDENGROVE	MERIDIAN
SUBDIVISION	1	NEW INSTALL	GOLDENGROVE	MERIDIAN
SUBDIVISION	1	NEW INSTALL	GOLDENGROVE	MERIDIAN
SUBDIVISION	1	NEW INSTALL	GOLDENGROVE	MERIDIAN
SUBDIVISION	1	NEW INSTALL	GOLDENGROVE	MERIDIAN
SUBDIVISION	1	NEW INSTALL	GOLDENGROVE	MERIDIAN
SUBDIVISION	1	NEW INSTALL	GOLDENGROVE	MERIDIAN
SUBDIVISION	1	NEW INSTALL	GOLDENGROVE	MERIDIAN
SUBDIVISION	1	NEW INSTALL	GOLDENGROVE	MERIDIAN
SUBDIVISION	1	NEW INSTALL	GOLDENGROVE	MERIDIAN
SUBDIVISION	1	NEW INSTALL	GOLDENGROVE	MERIDIAN
SUBDIVISION	1	NEW INSTALL	GOLDENGROVE	MERIDIAN
SUBDIVISION	2	NEW INSTALL	SHELBURNE NO 01	MERIDIAN
SUBDIVISION	1	NEW INSTALL	SHELBURNE NO 01	MERIDIAN
SUBDIVISION	2	NEW INSTALL	SHELBURNE NO 01	MERIDIAN

SUBDIVISION	1	NEW INSTALL	SHELBURNE NO 01	MERIDIAN
SUBDIVISION	2	NEW INSTALL	SHELBURNE NO 01	MERIDIAN
SUBDIVISION	1	NEW INSTALL	SHELBURNE NO 01	MERIDIAN
SUBDIVISION	2	NEW INSTALL	SHELBURNE NO 01	MERIDIAN
SUBDIVISION	1	NEW INSTALL	SHELBURNE NO 01	MERIDIAN
SUBDIVISION	1	NEW INSTALL	HILLS CENTURY FARM PHASE 04	MERIDIAN
SUBDIVISION	1	NEW INSTALL	HILLS CENTURY FARM PHASE 04	MERIDIAN
SUBDIVISION	2	NEW INSTALL	HILLS CENTURY FARM PHASE 04	MERIDIAN
SUBDIVISION	2	NEW INSTALL	HILLS CENTURY FARM PHASE 04	MERIDIAN
SUBDIVISION	2	NEW INSTALL	HILLS CENTURY FARM PHASE 04	MERIDIAN
SUBDIVISION	2	NEW INSTALL	HILLS CENTURY FARM PHASE 04	MERIDIAN
SUBDIVISION	2	NEW INSTALL	HILLS CENTURY FARM PHASE 04	MERIDIAN
SUBDIVISION	2	NEW INSTALL	HILLS CENTURY FARM PHASE 04	MERIDIAN
SUBDIVISION	2	NEW INSTALL	HILLS CENTURY FARM PHASE 04	MERIDIAN
SUBDIVISION	1	NEW INSTALL	HILLS CENTURY FARM PHASE 04	MERIDIAN
SUBDIVISION	1	NEW INSTALL	HILLS CENTURY FARM PHASE 05	MERIDIAN
SUBDIVISION	1	NEW INSTALL	HILLS CENTURY FARM PHASE 05	MERIDIAN
SUBDIVISION	1	NEW	HILLS CENTURY FARM PHASE 05	MERIDIAN

		INSTALL		
SUBDIVISION	1	NEW INSTALL	HILLS CENTURY FARM PHASE 03	MERIDIAN
SUBDIVISION	1	NEW INSTALL	HILLS CENTURY FARM PHASE 03	MERIDIAN
SUBDIVISION	1	NEW INSTALL	HILLS CENTURY FARM PHASE 03	MERIDIAN
SUBDIVISION	1	NEW INSTALL	HILLS CENTURY FARM PHASE 03	MERIDIAN
SUBDIVISION	1	NEW INSTALL	HILLS CENTURY FARM PHASE 03	MERIDIAN
SUBDIVISION	1	NEW INSTALL	HILLS CENTURY FARM PHASE 03	MERIDIAN
SUBDIVISION	1	NEW INSTALL	HILLS CENTURY FARM PHASE 01	MERIDIAN
SUBDIVISION	1	NEW INSTALL	HILLS CENTURY FARM PHASE 01	MERIDIAN
SUBDIVISION	1	NEW INSTALL	HILLS CENTURY FARM PHASE 04	MERIDIAN
SUBDIVISION	2	NEW INSTALL	HILLS CENTURY FARM PHASE 04	MERIDIAN
SUBDIVISION	2	NEW INSTALL	HILLS CENTURY FARM PHASE 05	MERIDIAN
SUBDIVISION	2	NEW INSTALL	HILLS CENTURY FARM PHASE 05	MERIDIAN
SUBDIVISION	2	NEW INSTALL	HILLS CENTURY FARM PHASE 05	MERIDIAN
SUBDIVISION	1	NEW INSTALL	HILLS CENTURY FARM PHASE 05	MERIDIAN
SUBDIVISION	1	NEW INSTALL	HILLS CENTURY FARM PHASE 05	MERIDIAN
SUBDIVISION	1	NEW INSTALL	HILLS CENTURY FARM PHASE 05	MERIDIAN
SUBDIVISION	1	NEW INSTALL	HILLS CENTURY FARM PHASE 06	MERIDIAN
SUBDIVISION	1	NEW INSTALL	HILLS CENTURY FARM PHASE 06	MERIDIAN

SUBDIVISION	1	NEW INSTALL	HILLS CENTURY FARM PHASE 06	MERIDIAN
SUBDIVISION	1	NEW INSTALL	HILLS CENTURY FARM PHASE 06	MERIDIAN
SUBDIVISION	1	NEW INSTALL	HILLS CENTURY FARM PHASE 06	MERIDIAN
SUBDIVISION	1	NEW INSTALL	HILLS CENTURY FARM PHASE 06	MERIDIAN
SUBDIVISION	1	NEW INSTALL	HILLS CENTURY FARM PHASE 06	MERIDIAN
SUBDIVISION	1	NEW INSTALL	HILLS CENTURY FARM PHASE 06	MERIDIAN
SUBDIVISION	1	NEW INSTALL	HOWRY LANE NO 01	MERIDIAN
SUBDIVISION	1	NEW INSTALL	HOWRY LANE NO 01	MERIDIAN
SUBDIVISION	2	NEW INSTALL	HOWRY LANE NO 01	MERIDIAN
SUBDIVISION	2	NEW INSTALL	HOWRY LANE NO 01	MERIDIAN
SUBDIVISION	2	NEW INSTALL	HOWRY LANE NO 01	MERIDIAN
SUBDIVISION	2	NEW INSTALL	HOWRY LANE NO 01	MERIDIAN
SUBDIVISION	2	NEW INSTALL	HOWRY LANE NO 01	MERIDIAN
SUBDIVISION	1	NEW INSTALL	HOWRY LANE NO 01	MERIDIAN
SUBDIVISION	2	NEW INSTALL	HOWRY LANE NO 01	MERIDIAN
SUBDIVISION	2	NEW INSTALL	HOWRY LANE NO 01	MERIDIAN
SUBDIVISION	1	NEW INSTALL	HOWRY LANE NO 01	MERIDIAN
SUBDIVISION	1	NEW INSTALL	HOWRY LANE NO 01	MERIDIAN
SUBDIVISION	2	NEW	HOWRY LANE NO 01	MERIDIAN

		INSTALL		
SUBDIVISION	1	NEW INSTALL	ISOLA CREEK NO 04	MERIDIAN
SUBDIVISION	1	NEW INSTALL	ISOLA CREEK NO 04	MERIDIAN
SUBDIVISION	1	NEW INSTALL	ISOLA CREEK NO 04	MERIDIAN
SUBDIVISION	1	NEW INSTALL	ISOLA CREEK NO 04	MERIDIAN
SUBDIVISION	1	NEW INSTALL	ISOLA CREEK NO 04	MERIDIAN
SUBDIVISION	1	NEW INSTALL	ISOLA CREEK NO 04	MERIDIAN
SUBDIVISION	1	NEW INSTALL	KENTUCKY RIDGE ESTATES	MERIDIAN
SUBDIVISION	1	NEW INSTALL	KENTUCKY RIDGE ESTATES	MERIDIAN
SUBDIVISION	1	NEW INSTALL	KNIGHTSBRIDGE	MERIDIAN
SUBDIVISION	1	NEW INSTALL	KNIGHTSBRIDGE	MERIDIAN
SUBDIVISION	1	NEW INSTALL	KNIGHTSBRIDGE	MERIDIAN
SUBDIVISION	1	NEW INSTALL	KNIGHTSBRIDGE	MERIDIAN
SUBDIVISION	2	NEW INSTALL	OAKS SOUTH THE NO 05	MERIDIAN
SUBDIVISION	2	NEW INSTALL	OAKS SOUTH THE NO 05	MERIDIAN
SUBDIVISION	2	NEW INSTALL	OAKS SOUTH THE NO 05	MERIDIAN
SUBDIVISION	2	NEW INSTALL	OAKS SOUTH THE NO 05	MERIDIAN
SUBDIVISION	1	NEW INSTALL	OAKS SOUTH THE NO 05	MERIDIAN
SUBDIVISION	1	NEW INSTALL	OAKS SOUTH THE NO 05	MERIDIAN

SUBDIVISION	1	NEW INSTALL	OAKS SOUTH THE NO 05	MERIDIAN
SUBDIVISION	1	NEW INSTALL	OAKS SOUTH THE NO 05	MERIDIAN
SUBDIVISION	1	NEW INSTALL	OAKS SOUTH THE NO 05	MERIDIAN
SUBDIVISION	1	NEW INSTALL	OAKS SOUTH THE NO 05	MERIDIAN
SUBDIVISION	1	NEW INSTALL	PAISLEY MEADOWS NO 01	MERIDIAN
SUBDIVISION	1	NEW INSTALL	PAISLEY MEADOWS NO 01	MERIDIAN
SUBDIVISION	1	NEW INSTALL	PAISLEY MEADOWS NO 01	MERIDIAN
SUBDIVISION	1	NEW INSTALL	PAISLEY MEADOWS NO 01	MERIDIAN
SUBDIVISION	1	NEW INSTALL	PAISLEY MEADOWS NO 01	MERIDIAN
SUBDIVISION	1	NEW INSTALL	PAISLEY MEADOWS NO 01	MERIDIAN
SUBDIVISION	1	NEW INSTALL	PAISLEY MEADOWS NO 01	MERIDIAN
SUBDIVISION	1	NEW INSTALL	PAISLEY MEADOWS NO 01	MERIDIAN
SUBDIVISION	1	NEW INSTALL	PAISLEY MEADOWS NO 01	MERIDIAN
SUBDIVISION	1	NEW INSTALL	PAISLEY MEADOWS NO 01	MERIDIAN
SUBDIVISION	2	NEW INSTALL	PAISLEY MEADOWS NO 01	MERIDIAN
SUBDIVISION	1	NEW INSTALL	PARAMOUNT NO 33	MERIDIAN
SUBDIVISION	1	NEW INSTALL	PARAMOUNT NO 33	MERIDIAN
SUBDIVISION	1	NEW INSTALL	WHITEACRE NO 01	MERIDIAN
SUBDIVISION	1	NEW	WHITEACRE NO 03	MERIDIAN

		INSTALL		
SUBDIVISION	2	NEW INSTALL	WHITEACRE NO 01	MERIDIAN
SUBDIVISION	1	NEW INSTALL	WHITEACRE NO 03	MERIDIAN
SUBDIVISION	2	NEW INSTALL	WHITEACRE NO 03	MERIDIAN
SUBDIVISION	1	NEW INSTALL	VERADO NO 01	MERIDIAN
SUBDIVISION	1	NEW INSTALL	VERADO NO 01	MERIDIAN
SUBDIVISION	1	NEW INSTALL	VERADO NO 01	MERIDIAN
SUBDIVISION	1	NEW INSTALL	VERADO NO 01	MERIDIAN
SUBDIVISION	1	NEW INSTALL	VERADO NO 01	MERIDIAN
SUBDIVISION	1	NEW INSTALL	VERADO NO 01	MERIDIAN
SUBDIVISION	1	NEW INSTALL	VERADO NO 01	MERIDIAN
SUBDIVISION	1	NEW INSTALL	VERADO NO 01	MERIDIAN
SUBDIVISION	1	NEW INSTALL	VERADO NO 01	MERIDIAN
SUBDIVISION	2	NEW INSTALL	VERADO NO 01	MERIDIAN
SUBDIVISION	1	NEW INSTALL	VERADO NO 01	MERIDIAN
SUBDIVISION	1	NEW INSTALL	SOUTHERN HIGHLANDS NO 03	MERIDIAN
SUBDIVISION	1	NEW INSTALL	SOUTHERN HIGHLANDS NO 03	MERIDIAN
SUBDIVISION	2	NEW INSTALL	SOUTHERN HIGHLANDS NO 03	MERIDIAN
SUBDIVISION	1	NEW INSTALL	SOUTHERN HIGHLANDS NO 03	MERIDIAN

SUBDIVISION	1	NEW INSTALL	SOUTHERN HIGHLANDS NO 03	MERIDIAN
SUBDIVISION	2	NEW INSTALL	SOUTHERN HIGHLANDS NO 03	MERIDIAN
SUBDIVISION	1	NEW INSTALL	SOUTHERN HIGHLANDS NO 03	MERIDIAN
SUBDIVISION	1	NEW INSTALL	SOUTHERN HIGHLANDS NO 03	MERIDIAN
SUBDIVISION	1	NEW INSTALL	SHELBURNE NO 01	MERIDIAN
SUBDIVISION	1	NEW INSTALL	SHELBURNE NO 01	MERIDIAN
SUBDIVISION	1	NEW INSTALL	SHELBURNE NO 01	MERIDIAN
SUBDIVISION	1	NEW INSTALL	SHELBURNE NO 01	MERIDIAN
SUBDIVISION	1	NEW INSTALL	SHELBURNE NO 01	MERIDIAN
SUBDIVISION	1	NEW INSTALL	SHELBURNE NO 01	MERIDIAN
SUBDIVISION	1	NEW INSTALL	SHELBURNE NO 01	MERIDIAN
SUBDIVISION	2	NEW INSTALL	SHELBURNE NO 01	MERIDIAN
SUBDIVISION	1	NEW INSTALL	REFLECTION RIDGE NO 06	MERIDIAN
SUBDIVISION	1	NEW INSTALL	REFLECTION RIDGE NO 06	MERIDIAN
SUBDIVISION	1	NEW INSTALL	REFLECTION RIDGE NO 06	MERIDIAN
SUBDIVISION	1	NEW INSTALL	REFLECTION RIDGE NO 06	MERIDIAN
SUBDIVISION	1	NEW INSTALL	REFLECTION RIDGE NO 05	MERIDIAN
SUBDIVISION	1	NEW INSTALL	REFLECTION RIDGE NO 05	MERIDIAN
SUBDIVISION	2	NEW INSTALL	REFLECTION RIDGE NO 05	MERIDIAN
SUBDIVISION	2	NEW	REFLECTION RIDGE NO 05	MERIDIAN

		INSTALL		
SUBDIVISION	1	NEW INSTALL	REFLECTION RIDGE NO 05	MERIDIAN
SUBDIVISION	1	NEW INSTALL	REFLECTION RIDGE NO 05	MERIDIAN
SUBDIVISION	1	NEW INSTALL	TM CREEK NO 01	MERIDIAN
SUBDIVISION	1	NEW INSTALL	TM CREEK NO 01	MERIDIAN
SUBDIVISION	1	NEW INSTALL	WOODBURN WEST NO 02	MERIDIAN
SUBDIVISION	1	NEW INSTALL	WOODBURN WEST NO 02	MERIDIAN
SUBDIVISION	1	NEW INSTALL	WOODBURN WEST NO 02	MERIDIAN
SUBDIVISION	1	NEW INSTALL	WOODBURN WEST NO 02	MERIDIAN
SUBDIVISION	1	NEW INSTALL	WOODBURN WEST NO 02	MERIDIAN
SUBDIVISION	1	NEW INSTALL	WOODBURN WEST NO 02	MERIDIAN
SUBDIVISION	1	NEW INSTALL	WOODBURN WEST NO 01	MERIDIAN
SUBDIVISION	1	NEW INSTALL	WOODBURN WEST NO 01	MERIDIAN
SUBDIVISION	1	NEW INSTALL	WOODBURN WEST NO 02	MERIDIAN
SUBDIVISION	1	NEW INSTALL	WOODBURN WEST NO 02	MERIDIAN
SUBDIVISION	1	NEW INSTALL	WOODBURN WEST NO 02	MERIDIAN
SUBDIVISION	1	NEW INSTALL	WOODBURN WEST NO 01	MERIDIAN
SUBDIVISION	1	NEW INSTALL	WOODBURN WEST NO 01	MERIDIAN
SUBDIVISION	1	NEW INSTALL	WOODBURN WEST NO 01	MERIDIAN

SUBDIVISION	1	NEW INSTALL	WOODBURN WEST NO 01	MERIDIAN
SUBDIVISION	1	NEW INSTALL	WOODBURN WEST NO 01	MERIDIAN
SUBDIVISION	1	NEW INSTALL	WOODBURN WEST NO 01	MERIDIAN
SUBDIVISION	1	NEW INSTALL	WHITEBARK NO 02	MERIDIAN
SUBDIVISION	1	NEW INSTALL	WHITEBARK NO 02	MERIDIAN
SUBDIVISION	1	NEW INSTALL	WHITEACRE NO 02	MERIDIAN
SUBDIVISION	1	NEW INSTALL	WHITEACRE NO 02	MERIDIAN
SUBDIVISION	1	NEW INSTALL	WHITEACRE NO 02	MERIDIAN
SUBDIVISION	1	NEW INSTALL	WHITEACRE NO 02	MERIDIAN
SUBDIVISION	1	NEW INSTALL	WHITEACRE NO 02	MERIDIAN
SUBDIVISION	1	NEW INSTALL	WHITEACRE NO 02	MERIDIAN
SUBDIVISION	1	NEW INSTALL	WHITEACRE NO 02	MERIDIAN
SUBDIVISION	1	NEW INSTALL	WHITEACRE NO 02	MERIDIAN
SUBDIVISION	1	NEW INSTALL	VICENZA NO 03	MERIDIAN
SUBDIVISION	1	NEW INSTALL	VICENZA NO 03	MERIDIAN
SUBDIVISION	1	NEW INSTALL	VICENZA NO 03	MERIDIAN
SUBDIVISION	1	NEW INSTALL	VICENZA NO 03	MERIDIAN
SUBDIVISION	1	NEW INSTALL	TM CROSSING	MERIDIAN
SUBDIVISION	1	NEW INSTALL	TM CROSSING	MERIDIAN
SUBDIVISION	1	NEW	TM CREEK NO 02	MERIDIAN

		INSTALL		
SUBDIVISION	1	NEW INSTALL	TM CREEK NO 02	MERIDIAN
SUBDIVISION	1	NEW INSTALL	TM CREEK NO 02	MERIDIAN
SUBDIVISION	1	NEW INSTALL	TM CREEK NO 02	MERIDIAN
SUBDIVISION	1	NEW INSTALL	TM CREEK NO 02	MERIDIAN
SUBDIVISION	1	NEW INSTALL	TM CREEK NO 02	MERIDIAN
SUBDIVISION	1	NEW INSTALL	TM CREEK NO 01	MERIDIAN
SUBDIVISION	1	NEW INSTALL	TM CREEK NO 01	MERIDIAN
SUBDIVISION	1	NEW INSTALL	SOUTHRIDGE PHASE 02	MERIDIAN
SUBDIVISION	1	NEW INSTALL	SOUTHRIDGE PHASE 02	MERIDIAN
SUBDIVISION	1	NEW INSTALL	SOUTHRIDGE PHASE 02	MERIDIAN
SUBDIVISION	1	NEW INSTALL	SOUTHRIDGE PHASE 02	MERIDIAN
SUBDIVISION	1	NEW INSTALL	PRIMROSE	MERIDIAN
SUBDIVISION	1	NEW INSTALL	PRIMROSE	MERIDIAN
SUBDIVISION	1	NEW INSTALL	MOVADO NO 03	MERIDIAN
SUBDIVISION	1	NEW INSTALL	MOVADO NO 03	MERIDIAN
SUBDIVISION	1	NEW INSTALL	MOVADO NO 03	MERIDIAN
SUBDIVISION	1	NEW INSTALL	MOVADO NO 03	MERIDIAN
SUBDIVISION	1	NEW INSTALL	MOVADO NO 03	MERIDIAN

SUBDIVISION	1	NEW INSTALL	MOVADO NO 03	MERIDIAN
SUBDIVISION	1	NEW INSTALL	MOVADO NO 03	MERIDIAN
SUBDIVISION	1	NEW INSTALL	MOVADO NO 03	MERIDIAN
SUBDIVISION	1	NEW INSTALL	MOVADO NO 03	MERIDIAN
SUBDIVISION	1	NEW INSTALL	MOVADO NO 03	MERIDIAN
SUBDIVISION	1	NEW INSTALL	MOVADO NO 03	MERIDIAN
SUBDIVISION	1	NEW INSTALL	MOVADO NO 03	MERIDIAN
SUBDIVISION	1	NEW INSTALL	SILVERSTONE CAMPUS	MERIDIAN
SUBDIVISION	1	NEW INSTALL	SILVERSTONE CAMPUS	MERIDIAN
SUBDIVISION	1	NEW INSTALL	MOVADO NO 02	MERIDIAN
SUBDIVISION	1	NEW INSTALL	MOVADO NO 02	MERIDIAN
SUBDIVISION	1	NEW INSTALL	MOVADO NO 02	MERIDIAN
SUBDIVISION	1	NEW INSTALL	MOVADO NO 02	MERIDIAN
SUBDIVISION	1	NEW INSTALL	MOVADO NO 02	MERIDIAN
SUBDIVISION	1	NEW INSTALL	MOVADO NO 02	MERIDIAN
SUBDIVISION	1	NEW INSTALL	MOVADO NO 02	MERIDIAN
SUBDIVISION	1	NEW INSTALL	MOVADO NO 02	MERIDIAN
SUBDIVISION	1	NEW INSTALL	MOVADO NO 02	MERIDIAN
SUBDIVISION	1	NEW	MOVADO NO 02	MERIDIAN

		INSTALL		
SUBDIVISION	1	NEW INSTALL	MOVADO NO 02	MERIDIAN
SUBDIVISION	1	NEW INSTALL	PAISLEY MEADOWS NO 01	MERIDIAN
SUBDIVISION	1	NEW INSTALL	PAISLEY MEADOWS NO 01	MERIDIAN
SUBDIVISION	1	NEW INSTALL	PARAMOUNT NO 33	MERIDIAN
SUBDIVISION	1	NEW INSTALL	TM CROSSING	MERIDIAN
SUBDIVISION	1	NEW INSTALL	DESTINATION PLACE	MERIDIAN
SUBDIVISION	1	NEW INSTALL	DESTINATION PLACE	MERIDIAN
SUBDIVISION	1	NEW INSTALL	DESTINATION PLACE	MERIDIAN
SUBDIVISION	1	NEW INSTALL	DESTINATION PLACE	MERIDIAN
SUBDIVISION	1	NEW INSTALL	DESTINATION PLACE	MERIDIAN
SUBDIVISION	1	NEW INSTALL	DESTINATION PLACE	MERIDIAN
SUBDIVISION	1	NEW INSTALL	DESTINATION PLACE	MERIDIAN
SUBDIVISION	1	NEW INSTALL	DESTINATION PLACE	MERIDIAN
SUBDIVISION	1	NEW INSTALL	DESTINATION PLACE	MERIDIAN
SUBDIVISION	1	NEW INSTALL	DESTINATION PLACE	MERIDIAN
SUBDIVISION	1	NEW INSTALL	DESTINATION PLACE	MERIDIAN
SUBDIVISION	1	NEW INSTALL	PARAMOUNT NO 33	MERIDIAN

SUBDIVISION	2	NEW INSTALL	BAINBRIDGE NO 01	MERIDIAN
SUBDIVISION	1	NEW INSTALL	BAINBRIDGE NO 01	MERIDIAN
SUBDIVISION	1	NEW INSTALL	BAINBRIDGE NO 01	MERIDIAN
SUBDIVISION	1	NEW INSTALL	BAINBRIDGE NO 01	MERIDIAN
SUBDIVISION	2	NEW INSTALL	BAINBRIDGE NO 01	MERIDIAN
SUBDIVISION	2	NEW INSTALL	BAINBRIDGE NO 01	MERIDIAN
SUBDIVISION	2	NEW INSTALL	BAINBRIDGE NO 01	MERIDIAN
SUBDIVISION	2	NEW INSTALL	BAINBRIDGE NO 01	MERIDIAN
SUBDIVISION	2	NEW INSTALL	BAINBRIDGE NO 01	MERIDIAN
SUBDIVISION	2	NEW INSTALL	BAINBRIDGE NO 01	MERIDIAN
SUBDIVISION	1	NEW INSTALL	BAINBRIDGE NO 01	MERIDIAN
SUBDIVISION	1	NEW INSTALL	BAINBRIDGE NO 01	MERIDIAN
SUBDIVISION	2	NEW INSTALL	PARKSTONE NO 08	STAR
SUBDIVISION	1	NEW INSTALL	PARKSTONE NO 08	STAR
SUBDIVISION	1	NEW INSTALL	PARKSTONE NO 08	STAR
SUBDIVISION	1	NEW INSTALL	PARKSTONE NO 08	STAR
SUBDIVISION	1	NEW INSTALL	PARKSTONE NO 08	STAR
SUBDIVISION	1	NEW INSTALL	STARCREEK PHASE 03	STAR
SUBDIVISION	1	NEW INSTALL	STARCREEK PHASE 03	STAR
SUBDIVISION	1	NEW	STARCREEK PHASE 03	STAR

		INSTALL		
SUBDIVISION	1	NEW INSTALL	STARCREEK PHASE 03	STAR
SUBDIVISION	1	NEW INSTALL	STARCREEK PHASE 03	STAR
SUBDIVISION	1	NEW INSTALL	STARCREEK PHASE 03	STAR
SUBDIVISION	1	NEW INSTALL	STARCREEK PHASE 03	STAR
SUBDIVISION	1	NEW INSTALL	STARCREEK PHASE 03	STAR
SUBDIVISION	1	NEW INSTALL	STARCREEK PHASE 03	STAR
SUBDIVISION	1	NEW INSTALL	STARCREEK PHASE 03	STAR
SUBDIVISION	1	NEW INSTALL	STARCREEK PHASE 03	STAR
SUBDIVISION	1	NEW INSTALL	CRAFTSMAN ESTATES PHASE 01	STAR
SUBDIVISION	1	NEW INSTALL	CRAFTSMAN ESTATES PHASE 01	STAR
SUBDIVISION	1	NEW INSTALL	CRAFTSMAN ESTATES PHASE 01	STAR
SUBDIVISION	1	NEW INSTALL	CRAFTSMAN ESTATES PHASE 01	STAR
SUBDIVISION	1	NEW INSTALL	CRAFTSMAN ESTATES PHASE 01	STAR
SUBDIVISION	1	NEW INSTALL	CRAFTSMAN ESTATES PHASE 01	STAR
SUBDIVISION	1	NEW INSTALL	CRAFTSMAN ESTATES PHASE 01	STAR
SUBDIVISION	1	NEW INSTALL	CRAFTSMAN ESTATES PHASE 01	STAR
SUBDIVISION	1	NEW INSTALL	PARKSTONE NO 06	STAR
SUBDIVISION	1	NEW INSTALL	PARKSTONE NO 06	STAR
SUBDIVISION	1	NEW INSTALL	PARKSTONE NO 07	STAR

		INSTALL		
SUBDIVISION	2	NEW INSTALL	LILAC SPRINGS NO 01	EAGLE
SUBDIVISION	2	NEW INSTALL	LILAC SPRINGS NO 01	EAGLE
SUBDIVISION	2	NEW INSTALL	LILAC SPRINGS NO 01	EAGLE
SUBDIVISION	2	NEW INSTALL	LILAC SPRINGS NO 01	EAGLE
SUBDIVISION	2	NEW INSTALL	LILAC SPRINGS NO 01	EAGLE
SUBDIVISION	2	NEW INSTALL	LILAC SPRINGS NO 01	EAGLE
SUBDIVISION	1	NEW INSTALL	LILAC SPRINGS NO 01	EAGLE
SUBDIVISION	2	NEW INSTALL	LILAC SPRINGS NO 01	EAGLE
SUBDIVISION	2	NEW INSTALL	TANNENBAUM NO 02	EAGLE
SUBDIVISION	1	NEW INSTALL	TANNENBAUM NO 03	EAGLE
SUBDIVISION	1	NEW INSTALL	TANNENBAUM NO 03	EAGLE
SUBDIVISION	2	NEW INSTALL	TANNENBAUM NO 03	EAGLE
SUBDIVISION	2	NEW INSTALL	TANNENBAUM NO 03	EAGLE
SUBDIVISION	1	NEW INSTALL	TANNENBAUM NO 04	EAGLE
SUBDIVISION	1	NEW INSTALL	TANNENBAUM NO 04	EAGLE
SUBDIVISION	1	NEW INSTALL	TANNENBAUM NO 04	EAGLE
SUBDIVISION	1	NEW INSTALL	TANNENBAUM NO 04	EAGLE
SUBDIVISION	1	NEW INSTALL	TANNENBAUM NO 04	EAGLE

SUBDIVISION	1	NEW INSTALL	TANNENBAUM NO 04	EAGLE
SUBDIVISION	1	NEW INSTALL	TANNENBAUM NO 04	EAGLE
SUBDIVISION	1	NEW INSTALL	TANNENBAUM NO 04	EAGLE
SUBDIVISION	1	NEW INSTALL	TANNENBAUM NO 03	EAGLE
SUBDIVISION	1	NEW INSTALL	FOXGLOVE ESTATES NO 02	EAGLE
SUBDIVISION	1	NEW INSTALL	FOXGLOVE ESTATES NO 02	EAGLE
SUBDIVISION	1	NEW INSTALL	FOXGLOVE ESTATES NO 02	EAGLE
SUBDIVISION	1	NEW INSTALL	FOXGLOVE ESTATES NO 02	EAGLE
SUBDIVISION	1	NEW INSTALL	FOXGLOVE ESTATES NO 02	EAGLE
SUBDIVISION	1	NEW INSTALL	GATED GARDEN PHASE 01	EAGLE
SUBDIVISION	1	NEW INSTALL	GATED GARDEN PHASE 01	EAGLE
SUBDIVISION	1	NEW INSTALL	GATED GARDEN PHASE 01	EAGLE
SUBDIVISION	1	NEW INSTALL	GATED GARDEN PHASE 01	EAGLE
SUBDIVISION	1	NEW INSTALL	GATED GARDEN PHASE 01	EAGLE
SUBDIVISION	1	NEW INSTALL	GATED GARDEN PHASE 01	EAGLE
SUBDIVISION	1	NEW INSTALL	GATED GARDEN PHASE 01	EAGLE
SUBDIVISION	1	NEW INSTALL	GATED GARDEN PHASE 01	EAGLE
SUBDIVISION	1	NEW INSTALL	GATED GARDEN PHASE 01	EAGLE
SUBDIVISION	1	NEW INSTALL	GATED GARDEN PHASE 01	EAGLE
SUBDIVISION	1	NEW	GATED GARDEN PHASE 01	EAGLE

		INSTALL		
SUBDIVISION	1	NEW INSTALL	GATED GARDEN PHASE 01	EAGLE
SUBDIVISION	1	NEW INSTALL	LAKEMOOR NO 06	EAGLE
SUBDIVISION	1	NEW INSTALL	LAKEMOOR NO 06	EAGLE
SUBDIVISION	1	NEW INSTALL	LANEWOOD NO 01	EAGLE
SUBDIVISION	1	NEW INSTALL	LANEWOOD NO 01	EAGLE
SUBDIVISION	1	NEW INSTALL	LANEWOOD NO 01	EAGLE
SUBDIVISION	1	NEW INSTALL	LANEWOOD NO 01	EAGLE
SUBDIVISION	1	NEW INSTALL	LANEWOOD NO 01	EAGLE
SUBDIVISION	1	NEW INSTALL	LANEWOOD NO 02	EAGLE
SUBDIVISION	2	NEW INSTALL	LANEWOOD NO 02	EAGLE
SUBDIVISION	1	NEW INSTALL	LANEWOOD NO 02	EAGLE
SUBDIVISION	1	NEW INSTALL	LANEWOOD NO 02	EAGLE
SUBDIVISION	1	NEW INSTALL	LANEWOOD NO 02	EAGLE
SUBDIVISION	1	NEW INSTALL	LANEWOOD NO 02	EAGLE
SUBDIVISION	1	NEW INSTALL	LANEWOOD NO 02	EAGLE
SUBDIVISION	1	NEW INSTALL	LANEWOOD NO 02	EAGLE
SUBDIVISION	1	NEW INSTALL	LANEWOOD NO 02	EAGLE
SUBDIVISION	1	NEW INSTALL	LANEWOOD NO 02	EAGLE

SUBDIVISION	1	NEW INSTALL	TANNENBAUM NO 03	EAGLE
SUBDIVISION	1	NEW INSTALL	SHADOWRIDGE	EAGLE
SUBDIVISION	1	NEW INSTALL	SHADOWRIDGE	EAGLE
SUBDIVISION	2	NEW INSTALL	SHADOWRIDGE	EAGLE
SUBDIVISION	1	NEW INSTALL	EAGLEFIELD COMMONS NO 01	EAGLE
SUBDIVISION	2	NEW INSTALL	EAGLEFIELD COMMONS NO 01	EAGLE
SUBDIVISION	1	NEW INSTALL	EAGLEFIELD COMMONS NO 01	EAGLE
SUBDIVISION	1	NEW INSTALL	WARRIOR PARK	EAGLE
SUBDIVISION	1	NEW INSTALL	WARRIOR PARK	EAGLE
SUBDIVISION	1	NEW INSTALL	FLINT ESTATES AMD	EAGLE
SUBDIVISION	1	NEW INSTALL	FLINT ESTATES AMD	EAGLE
SUBDIVISION	1	NEW INSTALL	FLINT ESTATES AMD	EAGLE
SUBDIVISION	1	NEW INSTALL	FLINT ESTATES AMD	EAGLE
SUBDIVISION	1	NEW INSTALL	SENORA CREEK NO 03	EAGLE
SUBDIVISION	1	NEW INSTALL	SENORA CREEK NO 03	EAGLE
SUBDIVISION	1	NEW INSTALL	REDSTONE RANCH	EAGLE
SUBDIVISION	1	NEW INSTALL	REDSTONE RANCH	EAGLE
SUBDIVISION	1	NEW INSTALL	REDSTONE RANCH	EAGLE
SUBDIVISION	1	NEW	REDSTONE RANCH	EAGLE

		INSTALL		
SUBDIVISION	1	NEW INSTALL	REDSTONE RANCH	EAGLE
SUBDIVISION	1	NEW INSTALL	REDSTONE RANCH	EAGLE
SUBDIVISION	1	NEW INSTALL	CEDARFIELD NO 01	EAGLE
SUBDIVISION	1	NEW INSTALL	CEDARFIELD NO 01	EAGLE
SUBDIVISION	1	NEW INSTALL	CEDARFIELD NO 01	EAGLE
SUBDIVISION	1	NEW INSTALL	CEDARFIELD NO 01	EAGLE
SUBDIVISION	1	NEW INSTALL	CEDARFIELD NO 01	EAGLE
SUBDIVISION	1	NEW INSTALL	CEDARFIELD NO 01	EAGLE
SUBDIVISION	1	NEW INSTALL	CEDARFIELD NO 01	EAGLE
SUBDIVISION	1	NEW INSTALL	CEDARFIELD NO 01	EAGLE
SUBDIVISION	1	NEW INSTALL	CEDARFIELD NO 01	EAGLE
SUBDIVISION	1	NEW INSTALL	CEDARFIELD NO 01	EAGLE
SUBDIVISION	1	NEW INSTALL	PRESERVE THE NO 06	EAGLE
SUBDIVISION	1	NEW INSTALL	PRESERVE THE NO 06	EAGLE
SUBDIVISION	1	NEW INSTALL	PRESERVE THE NO 01	EAGLE
SUBDIVISION	1	NEW INSTALL	PRESERVE THE NO 01	EAGLE
SUBDIVISION	1	NEW INSTALL	PRESERVE THE NO 01	EAGLE
SUBDIVISION	1	NEW INSTALL	PRESERVE THE NO 01	EAGLE

SUBDIVISION	1	NEW INSTALL	PRESERVE THE NO 01	EAGLE
SUBDIVISION	1	NEW INSTALL	PRESERVE THE NO 02	EAGLE
SUBDIVISION	1	NEW INSTALL	PRESERVE THE NO 02	EAGLE
SUBDIVISION	1	NEW INSTALL	PRESERVE THE NO 02	EAGLE
SUBDIVISION	1	NEW INSTALL	PRESERVE THE NO 02	EAGLE
SUBDIVISION	1	NEW INSTALL	PRESERVE THE NO 02	EAGLE
SUBDIVISION	1	NEW INSTALL	PRESERVE THE NO 02	EAGLE
SUBDIVISION	1	NEW INSTALL	PRESERVE THE NO 02	EAGLE
SUBDIVISION	1	NEW INSTALL	TANNENBAUM NO 04	EAGLE
SUBDIVISION	1	NEW INSTALL	TANNENBAUM NO 04	EAGLE
SUBDIVISION	1	NEW INSTALL	SILVER TRAIL PHASE 02	KUNA
SUBDIVISION	1	NEW INSTALL	SILVER TRAIL PHASE 02	KUNA
SUBDIVISION	1	NEW INSTALL	SILVER TRAIL PHASE 02	KUNA
SUBDIVISION	1	NEW INSTALL	SILVER TRAIL PHASE 02	KUNA
SUBDIVISION	1	NEW INSTALL	SILVER TRAIL PHASE 02	KUNA
SUBDIVISION	1	NEW INSTALL	ARDELL ESTATES NO 01	KUNA
SUBDIVISION	1	NEW INSTALL	ARDELL ESTATES NO 01	KUNA
SUBDIVISION	1	NEW INSTALL	ARDELL ESTATES NO 01	KUNA
SUBDIVISION	1	NEW	ARDELL ESTATES NO 01	KUNA

		INSTALL		
SUBDIVISION	1	NEW INSTALL	ARDELL ESTATES NO 01	KUNA
SUBDIVISION	1	NEW INSTALL	ARDELL ESTATES NO 01	KUNA
SUBDIVISION	1	NEW INSTALL	ARDELL ESTATES NO 01	KUNA
SUBDIVISION	1	NEW INSTALL	ARDELL ESTATES NO 01	KUNA
SUBDIVISION	1	NEW INSTALL	ARDELL ESTATES NO 01	KUNA
SUBDIVISION	1	NEW INSTALL	ARDELL ESTATES NO 01	KUNA
SUBDIVISION	1	NEW INSTALL	ARDELL ESTATES NO 01	KUNA
SUBDIVISION	1	NEW INSTALL	ARDELL ESTATES NO 01	KUNA
SUBDIVISION	1	NEW INSTALL	MINERAL SPRINGS NO 03	KUNA
SUBDIVISION	1	NEW INSTALL	MINERAL SPRINGS NO 03	KUNA
SUBDIVISION	1	NEW INSTALL	MINERAL SPRINGS NO 03	KUNA
SUBDIVISION	1	NEW INSTALL	MINERAL SPRINGS NO 03	KUNA
SUBDIVISION	1	NEW INSTALL	ARBOR RIDGE NO 03	KUNA
SUBDIVISION	2	NEW INSTALL	ARBOR RIDGE NO 03	KUNA
SUBDIVISION	1	NEW INSTALL	ARBOR RIDGE NO 03	KUNA
SUBDIVISION	2	NEW INSTALL	ARBOR RIDGE NO 03	KUNA
SUBDIVISION	2	NEW INSTALL	ARBOR RIDGE NO 03	KUNA
SUBDIVISION	2	NEW INSTALL	ARBOR RIDGE NO 03	KUNA

		INSTALL		
SUBDIVISION	1	NEW INSTALL	GREYHAWK NO 06	KUNA
SUBDIVISION	1	NEW INSTALL	GREYHAWK NO 06	KUNA
SUBDIVISION	1	NEW INSTALL	GREYHAWK NO 06	KUNA
SUBDIVISION	1	NEW INSTALL	GREYHAWK NO 05	KUNA
SUBDIVISION	2	NEW INSTALL	GREYHAWK NO 05	KUNA
SUBDIVISION	1	NEW INSTALL	GREYHAWK NO 05	KUNA
SUBDIVISION	1	NEW INSTALL	GREYHAWK NO 05	KUNA
SUBDIVISION	1	NEW INSTALL	GREYHAWK NO 05	KUNA
SUBDIVISION	1	NEW INSTALL	GREYHAWK NO 05	KUNA
SUBDIVISION	1	NEW INSTALL	GREYHAWK NO 05	KUNA
SUBDIVISION	1	NEW INSTALL	GREYHAWK NO 04	KUNA
SUBDIVISION	1	NEW INSTALL	GREYHAWK NO 04	KUNA
SUBDIVISION	1	NEW INSTALL	GREYHAWK NO 05	KUNA
SUBDIVISION	1	NEW INSTALL	TIMBERMIST NO 01	KUNA
SUBDIVISION	1	NEW INSTALL	TIMBERMIST NO 01	KUNA
SUBDIVISION	1	NEW INSTALL	TIMBERMIST NO 01	KUNA
SUBDIVISION	1	NEW INSTALL	TIMBERMIST NO 01	KUNA
SUBDIVISION	1	NEW INSTALL	TIMBERMIST NO 01	KUNA

SUBDIVISION	1	NEW INSTALL	TIMBERMIST NO 01	KUNA
SUBDIVISION	1	NEW INSTALL	TIMBERMIST NO 04	KUNA
SUBDIVISION	1	NEW INSTALL	TIMBERMIST NO 04	KUNA
SUBDIVISION	1	NEW INSTALL	TIMBERMIST NO 04	KUNA
SUBDIVISION	1	NEW INSTALL	TIMBERMIST NO 04	KUNA
SUBDIVISION	1	NEW INSTALL	TIMBERMIST NO 04	KUNA
SUBDIVISION	1	NEW INSTALL	TIMBERMIST NO 04	KUNA
SUBDIVISION	1	NEW INSTALL	TIMBERMIST NO 04	KUNA
SUBDIVISION	1	NEW INSTALL	TIMBERMIST NO 04	KUNA
SUBDIVISION	1	NEW INSTALL	TIMBERMIST NO 04	KUNA
SUBDIVISION	1	NEW INSTALL	TIMBERMIST NO 04	KUNA
SUBDIVISION	1	NEW INSTALL	TIMBERMIST NO 04	KUNA
SUBDIVISION	1	NEW INSTALL	TIMBERMIST NO 04	KUNA
SUBDIVISION	1	NEW INSTALL	TIMBERMIST NO 03	KUNA
SUBDIVISION	1	NEW INSTALL	TIMBERMIST NO 03	KUNA
SUBDIVISION	1	NEW INSTALL	CHARTER POINTE MEADOWS NORTH NO 01	ADA COUNTY
SUBDIVISION	1	NEW INSTALL	CHARTER POINTE MEADOWS NORTH NO 01	ADA COUNTY
SUBDIVISION	1	NEW INSTALL	CHARTER POINTE NO 10	ADA COUNTY
SUBDIVISION	1	NEW	CHARTER POINTE NO 10	ADA

		INSTALL		COUNTY
SUBDIVISION	1	NEW INSTALL	CHARTER POINTE NO 10	ADA COUNTY
SUBDIVISION	1	NEW INSTALL	CHARTER POINTE NO 10	ADA COUNTY
SUBDIVISION	1	NEW INSTALL	CHARTER POINTE NO 10	ADA COUNTY
SUBDIVISION	1	NEW INSTALL	CHARTER POINTE NO 10	ADA COUNTY
SUBDIVISION	1	NEW INSTALL	CADEN CREEK	ADA COUNTY
SUBDIVISION	1	NEW INSTALL	CADEN CREEK	ADA COUNTY
SUBDIVISION	1	NEW INSTALL	CADEN CREEK	ADA COUNTY
SUBDIVISION	1	NEW INSTALL	CADEN CREEK	ADA COUNTY
SUBDIVISION	1	NEW INSTALL	CADEN CREEK	ADA COUNTY
SUBDIVISION	1	NEW INSTALL	CADEN CREEK	ADA COUNTY
SUBDIVISION	1	NEW INSTALL	CADEN CREEK	ADA COUNTY
SUBDIVISION	1	NEW INSTALL	CADEN CREEK	ADA COUNTY
SUBDIVISION	1	NEW INSTALL	CADEN CREEK	ADA COUNTY
SUBDIVISION	1	NEW INSTALL	CADEN CREEK	ADA COUNTY
SUBDIVISION	2	NEW INSTALL	CADEN CREEK	ADA COUNTY
SUBDIVISION	1	NEW INSTALL	CADEN CREEK	ADA COUNTY
SUBDIVISION	1	NEW INSTALL	CADEN CREEK	ADA COUNTY
SUBDIVISION	1	NEW INSTALL	CADEN CREEK	ADA COUNTY

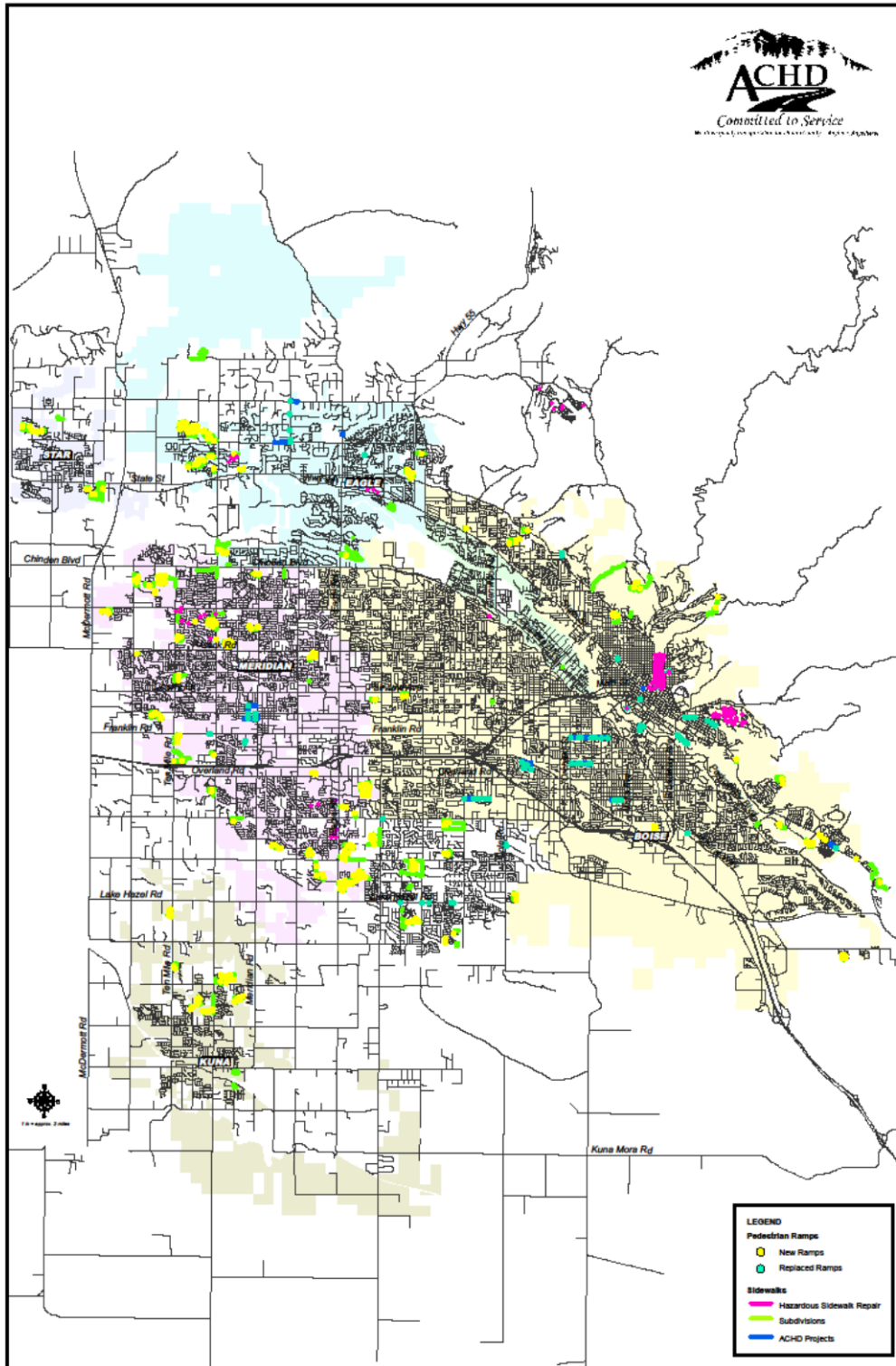
SUBDIVISION	1	NEW INSTALL	CADEN CREEK	ADA COUNTY
SUBDIVISION	1	NEW INSTALL	CADEN CREEK	ADA COUNTY
SUBDIVISION	2	NEW INSTALL	ANTLER RIDGE PHASE 02	ADA COUNTY
SUBDIVISION	1	NEW INSTALL	ANTLER RIDGE PHASE 02	ADA COUNTY
SUBDIVISION	1	NEW INSTALL	ANTLER RIDGE PHASE 02	ADA COUNTY
SUBDIVISION	2	NEW INSTALL	ANTLER RIDGE PHASE 02	ADA COUNTY
SUBDIVISION	1	NEW INSTALL	ANTLER RIDGE PHASE 02	ADA COUNTY
SUBDIVISION	1	NEW INSTALL	ANTLER RIDGE PHASE 02	ADA COUNTY
SUBDIVISION	1	NEW INSTALL	ANTLER RIDGE PHASE 02	ADA COUNTY
SUBDIVISION	1	NEW INSTALL	ANTLER RIDGE PHASE 02	ADA COUNTY
SUBDIVISION	1	NEW INSTALL	ANTLER RIDGE PHASE 02	ADA COUNTY
SUBDIVISION	1	NEW INSTALL	ANTLER RIDGE PHASE 02	ADA COUNTY
SUBDIVISION	1	NEW INSTALL	ANTLER RIDGE PHASE 02	ADA COUNTY
SUBDIVISION	1	NEW INSTALL	ANTLER RIDGE PHASE 02	ADA COUNTY
SUBDIVISION	2	NEW INSTALL	ANTLER RIDGE PHASE 03	ADA COUNTY
SUBDIVISION	2	NEW INSTALL	ANTLER RIDGE PHASE 03	ADA COUNTY
SUBDIVISION	2	NEW INSTALL	ANTLER RIDGE PHASE 03	ADA COUNTY
SUBDIVISION	2	NEW INSTALL	ANTLER RIDGE PHASE 03	ADA COUNTY
SUBDIVISION	1	NEW	ANTLER RIDGE PHASE 03	ADA

		INSTALL		COUNTY
SUBDIVISION	1	NEW INSTALL	ANTLER RIDGE PHASE 03	ADA COUNTY
SUBDIVISION	2	NEW INSTALL	ANTLER RIDGE PHASE 03	ADA COUNTY
SUBDIVISION	2	NEW INSTALL	ANTLER RIDGE PHASE 03	ADA COUNTY
SUBDIVISION	2	NEW INSTALL	ANTLER RIDGE PHASE 03	ADA COUNTY
SUBDIVISION	2	NEW INSTALL	ANTLER RIDGE PHASE 03	ADA COUNTY
SUBDIVISION	2	NEW INSTALL	HAZELWOOD VILLAGE NO 14	ADA COUNTY
SUBDIVISION	1	NEW INSTALL	HAZELWOOD VILLAGE NO 14	ADA COUNTY
SUBDIVISION	2	NEW INSTALL	HAZELWOOD VILLAGE NO 14	ADA COUNTY
SUBDIVISION	2	NEW INSTALL	HAZELWOOD VILLAGE NO 14	ADA COUNTY
SUBDIVISION	1	NEW INSTALL	HAZELWOOD VILLAGE NO 14	ADA COUNTY
SUBDIVISION	1	NEW INSTALL	HAZELWOOD VILLAGE NO 14	ADA COUNTY
SUBDIVISION	2	NEW INSTALL	HAZELWOOD VILLAGE NO 14	ADA COUNTY
SUBDIVISION	2	NEW INSTALL	HAZELWOOD VILLAGE NO 14	ADA COUNTY
SUBDIVISION	2	NEW INSTALL	HAZELWOOD VILLAGE NO 14	ADA COUNTY
SUBDIVISION	2	NEW INSTALL	HAZELWOOD VILLAGE NO 14	ADA COUNTY
SUBDIVISION	2	NEW INSTALL	HAZELWOOD VILLAGE NO 14	ADA COUNTY
SUBDIVISION	1	NEW INSTALL	HAZELWOOD VILLAGE NO 15	ADA COUNTY
SUBDIVISION	1	NEW INSTALL	HAZELWOOD VILLAGE NO 15	ADA COUNTY
SUBDIVISION	2	NEW INSTALL	HAZELWOOD VILLAGE NO 12	ADA COUNTY

SUBDIVISION	2	NEW INSTALL	HAZELWOOD VILLAGE NO 12	ADA COUNTY
SUBDIVISION	2	NEW INSTALL	HAZELWOOD VILLAGE NO 12	ADA COUNTY
SUBDIVISION	2	NEW INSTALL	HAZELWOOD VILLAGE NO 12	ADA COUNTY
SUBDIVISION	1	NEW INSTALL	HAZELWOOD VILLAGE NO 15	ADA COUNTY
SUBDIVISION	1	NEW INSTALL	HAZELWOOD VILLAGE NO 15	ADA COUNTY
SUBDIVISION	1	NEW INSTALL	HAZELWOOD VILLAGE NO 15	ADA COUNTY
SUBDIVISION	1	NEW INSTALL	HAZELWOOD VILLAGE NO 15	ADA COUNTY
SUBDIVISION	1	NEW INSTALL	HAZELWOOD VILLAGE NO 15	ADA COUNTY
SUBDIVISION	1	NEW INSTALL	HAZELWOOD VILLAGE NO 15	ADA COUNTY
SUBDIVISION	2	NEW INSTALL	PAINTED RIDGE NO 04	ADA COUNTY
SUBDIVISION	2	NEW INSTALL	PAINTED RIDGE NO 04	ADA COUNTY
SUBDIVISION	2	NEW INSTALL	PAINTED RIDGE NO 02	ADA COUNTY
SUBDIVISION	2	NEW INSTALL	PAINTED RIDGE NO 04	ADA COUNTY
SUBDIVISION	2	NEW INSTALL	PAINTED RIDGE NO 04	ADA COUNTY
SUBDIVISION	2	NEW INSTALL	PAINTED RIDGE NO 04	ADA COUNTY
SUBDIVISION	2	NEW INSTALL	PAINTED RIDGE NO 04	ADA COUNTY
SUBDIVISION	1	NEW INSTALL	PAINTED RIDGE NO 04	ADA COUNTY
SUBDIVISION	1	NEW INSTALL	PAINTED RIDGE NO 04	ADA COUNTY
SUBDIVISION	1	NEW	PAINTED RIDGE NO 04	ADA

		INSTALL		COUNTY
SUBDIVISION	1	NEW INSTALL	PAINTED RIDGE NO 04	ADA COUNTY
SUBDIVISION	1	NEW INSTALL	PAINTED RIDGE NO 04	ADA COUNTY
SUBDIVISION	1	NEW INSTALL	PAINTED RIDGE NO 04	ADA COUNTY
SUBDIVISION	1	NEW INSTALL	SOUTHCREEK NO 04	ADA COUNTY
SUBDIVISION	1	NEW INSTALL	SOUTHCREEK NO 04	ADA COUNTY
SUBDIVISION	1	NEW INSTALL	SOUTHCREEK NO 04	ADA COUNTY
SUBDIVISION	1	NEW INSTALL	SOUTHCREEK NO 04	ADA COUNTY
SUBDIVISION	1	NEW INSTALL	SOUTHCREEK NO 04	ADA COUNTY
SUBDIVISION	1	NEW INSTALL	SOUTHCREEK NO 04	ADA COUNTY
SUBDIVISION	1	NEW INSTALL	SOUTHCREEK NO 04	ADA COUNTY
SUBDIVISION	1	NEW INSTALL	SOUTHCREEK NO 04	ADA COUNTY

Appendix C: Map of 2017 Sidewalk/Ramp Projects



Ada County Highway District
2017 Sidewalk & Pedestrian Ramp Projects