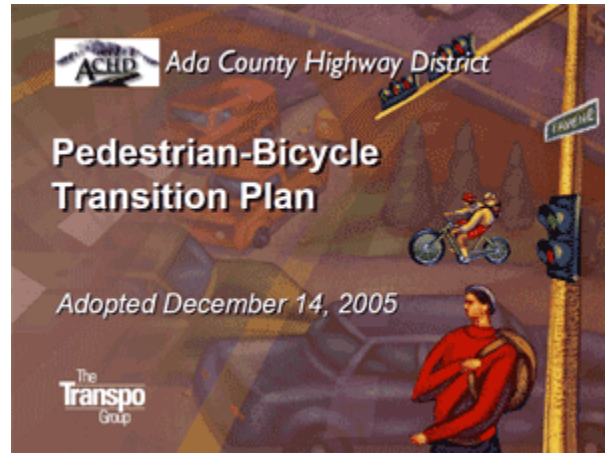


Ada County Highway District ADA Annual Report - Fiscal Year 2016

Background

On December 14, 2005 the Ada County Highway District (ACHD) Commission adopted the Pedestrian Bicycle Transition Plan (PBTP). The PBTP is intended to provide a comprehensive program to enhance the pedestrian and bicycle system in Ada County. This effort was initiated by ACHD, with a primary emphasis on addressing federal guidelines and regulatory requirements of the Americans with Disabilities Act (ADA), enacted on July 26, 1990. ACHD will update the PBTP in 2018.



ACHD has jurisdiction and responsibility for all public roads and streets within Ada County, Idaho, except state highways and interstate freeways. Under Idaho law, pedestrian (typically sidewalks) and bicycle system components of most public streets also fall within ACHD's jurisdiction.

The ADA provides comprehensive civil rights protections to persons with disabilities in the areas of employment, state and local government services, and access to public accommodations, transportation, telecommunications, and other public facilities, including sidewalks.

There are five statutory titles to the ADA; Title II: State and Local Governments is of most concern to ACHD. The PBTP is intended to accommodate the most recent ADA policies and rules. Title II prohibits public agencies from discriminating against persons with disabilities by requiring these agencies to make all programs, services, and activities accessible to persons with disabilities. Title II requires a public agency to evaluate its services, programs, policies, practices, and facilities to determine whether they are in compliance with the nondiscrimination requirements of the ADA.

The ADA requires agencies to prepare a transition plan to describe any structural or physical changes required to make facilities accessible. This plan outlines how these changes will be made in accordance with the nondiscrimination policies described in Title II. Commensurate with the ADA requirements for inventory and self-evaluation, ACHD targeted a significant portion of the overall planning effort to complete a walking inventory of the entire street-side pedestrian system within the Ada County urban areas.

In 2004-2005 more than 2,800 miles of existing and missing sidewalks and 19,300 street corners (with 15,500 curb ramps) were inventoried and assessed as part of ACHD's self-evaluation. Documenting the location, type, and condition of sidewalks and curb ramps is an important step in the pedestrian planning effort. This inventory helped ACHD identify critical "gaps" to fill.

In addition to establishing the baseline data set, ACHD established standard operating procedures to ensure that the GIS database for sidewalk and curb ramps remains current as new facilities are installed and substandard facilities are repaired.

Purpose

Since the PBTP was adopted, ACHD has worked diligently to plan, develop, and construct improvements to the pedestrian system that bring the sidewalks and curb ramps in Ada County into compliance with the ADA. Each fiscal year, ACHD catalogs the new improvements, which are added to ACHD's comprehensive pedestrian facility database. The purpose of this Annual Report is to describe the pedestrian improvements that occurred in fiscal year 2016.

New Facilities

ACHD is constantly expanding the length of sidewalks and number of curb ramps in Ada County and its six cities. The new sidewalks and curb ramps are primarily constructed through one of the following programs or activities:

- Large scale ACHD "Capital Projects" such as roadway expansion, and overlays;
- Smaller scale ACHD "Community Programs Projects" such as sidewalk construction, safe routes to school projects, and curb ramps;
- Residential and commercial subdivision;
- Miscellaneous commercial and residential building permits



ACHD expends significant amounts of federal and local funds to construct new improvements to the pedestrian system each fiscal year. In addition to sidewalks and curb ramps that are constructed with ACHD Capital Projects (i.e. roadway widening and overlays), the ACHD Commission has dedicated five percent of ACHD's annual capital budget to pedestrian specific projects (not associated with a specific roadway project). In 2009, Ada County voters approved an increase in vehicle registration fees to fund pedestrian projects near schools. These efforts by ACHD significantly exceed what is required by the Federal Highway Administration (FHWA)'s Safe Routes to School Program, a program that makes federal funding available through grants. ACHD applies for federal grants, but has historically funded safe routes to school improvements with local funds.

In addition, private development through subdivisions and new development also adds to ACHD's pedestrian network. ACHD works closely with developers to ensure that the pedestrian facilities constructed with private funds are ADA compliant. ACHD inspectors visually inspect and sign off on all improvements in the public right-of-way prior to official acceptance of the improvements.

Facility Maintenance

ACHD also has a Sidewalk Repair Program that focuses on repairing or reconstructing substandard sidewalks and curb ramps. The Sidewalk Repair Program is ACHD's programmatic approach to repairing and replacing substandard pedestrian facilities. This program also repairs or replaces sidewalk and curb ramps based on citizen concerns/requests.

Fiscal Year 2016 System Improvements

In fiscal year 2016, ACHD and private development installed 66.8 miles of new sidewalks in Ada County. ACHD also repaired 3.7 miles of substandard sidewalks. Figure 1 illustrates the total mileage of new and repaired sidewalk for fiscal year 2016, by jurisdiction. The total estimated investment in new and repaired sidewalk projects for fiscal year 2016 is close to \$8.5 million. (See Appendices A and B for further project details and cost estimates; see Appendix C for a map of project locations).

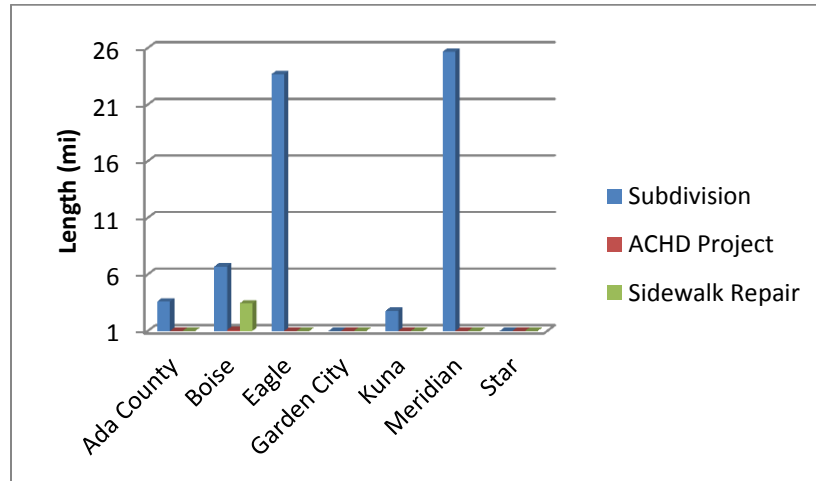


Figure 1: Sidewalks 2016

ACHD and private development also installed, replaced, or upgraded 1,248 pedestrian ramps across Ada County (See figure 2). ACHD, through its maintenance activities and sidewalk repair program, replaced or upgraded these pedestrian ramps to bring them into compliance with current ADA standards. The total estimated investment in new and repaired/replaced curb ramps for fiscal year 2016 is \$1.5 million. (See Appendices A and B for further project details and cost estimates; see Appendix C for a map of project locations).

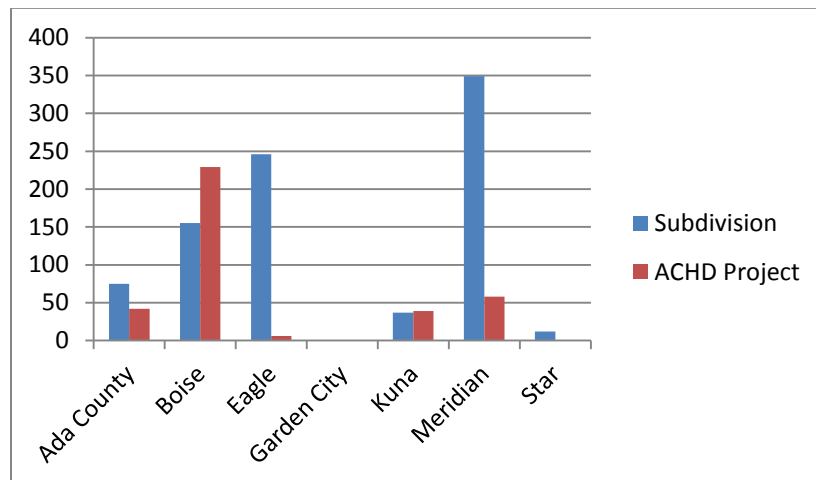


Figure 2: Ramps 2016

Appendix A: Sidewalk Projects

Fiscal Year 2016 Sidewalk Repair Projects

FY	Project Type	Width (ft)	Length (ft)	Estimated Cost	Jurisdiction
2016	MISC CONCRETE CONTRACTS-2016	5	45	\$ 1,032.75	ADA COUNTY
2016	MISC CONCRETE CONTRACTS-2016	5	20	\$ 459.00	ADA COUNTY
2016	MISC CONCRETE CONTRACTS-2016	5	15	\$ 344.25	ADA COUNTY
2016	MISC CONCRETE CONTRACTS-2016	0	0	\$ -	BOISE
2016	MISC CONCRETE CONTRACTS-2016	0	0	\$ -	BOISE
2016	MISC CONCRETE CONTRACTS-2016	0	0	\$ -	BOISE
2016	MISC CONCRETE CONTRACTS-2016	0	10	\$ -	BOISE
2016	MISC CONCRETE CONTRACTS-2016	0	0	\$ -	BOISE
2016	MISC CONCRETE CONTRACTS-2016	0	0	\$ -	BOISE
2016	MISC CONCRETE CONTRACTS-2016	0	0	\$ -	BOISE
2016	MISC CONCRETE CONTRACTS-2016	0	0	\$ -	BOISE
2016	MISC CONCRETE CONTRACTS-2016	0	0	\$ -	BOISE
2016	MISC CONCRETE CONTRACTS-2016	0	0	\$ -	BOISE
2016	MISC CONCRETE CONTRACTS-2016	0	0	\$ -	BOISE
2016	MISC CONCRETE CONTRACTS-2016	0	0	\$ -	BOISE
2016	MISC CONCRETE CONTRACTS-2016	0	0	\$ -	BOISE
2016	MISC CONCRETE CONTRACTS-2016	0	0	\$ -	BOISE
2016	MISC CONCRETE CONTRACTS-2016	0	0	\$ -	BOISE
2016	MISC CONCRETE CONTRACTS-2016	0	0	\$ -	BOISE
2016	MISC CONCRETE CONTRACTS-2016	0	0	\$ -	BOISE
2016	MISC CONCRETE CONTRACTS-2016	0	0	\$ -	BOISE
2016	MISC CONCRETE CONTRACTS-2016	0	0	\$ -	BOISE
2016	MISC CONCRETE CONTRACTS-2016	0	0	\$ -	BOISE
2016	MISC CONCRETE CONTRACTS-2016	0	0	\$ -	BOISE
2016	MISC CONCRETE CONTRACTS-2016	0	3	\$ -	BOISE
2016	MISC CONCRETE CONTRACTS-2016	0	0	\$ -	BOISE
2016	MISC CONCRETE CONTRACTS-2016	0	0	\$ -	BOISE
2016	MISC CONCRETE CONTRACTS-2016	0	0	\$ -	BOISE
2016	MISC CONCRETE CONTRACTS-2016	0	0	\$ -	BOISE
2016	MISC CONCRETE CONTRACTS-2016	0	0	\$ -	BOISE
2016	MISC CONCRETE CONTRACTS-2016	0	0	\$ -	BOISE
2016	MISC CONCRETE CONTRACTS-2016	0	0	\$ -	BOISE
2016	MISC CONCRETE CONTRACTS-2016	2	8	\$ 73.44	BOISE
2016	MISC CONCRETE CONTRACTS-2016	4	13	\$ 238.68	BOISE
2016	MISC CONCRETE CONTRACTS-2016	4	36	\$ 660.96	BOISE
2016	MISC CONCRETE CONTRACTS-2016	4	10	\$ 183.60	BOISE
2016	MISC CONCRETE CONTRACTS-2016	4	24	\$ 440.64	BOISE
2016	MISC CONCRETE CONTRACTS-2016	4	63	\$ 1,156.68	BOISE
2016	MISC CONCRETE CONTRACTS-2016	4	23	\$ 422.28	BOISE
2016	MISC CONCRETE CONTRACTS-2016	4	4	\$ 73.44	BOISE
2016	MISC CONCRETE CONTRACTS-2016	4	17	\$ 312.12	BOISE
2016	MISC CONCRETE CONTRACTS-2016	4	11	\$ 201.96	BOISE
2016	MISC CONCRETE CONTRACTS-2016	4	25	\$ 459.00	BOISE
2016	MISC CONCRETE CONTRACTS-2016	4	11	\$ 201.96	BOISE
2016	MISC CONCRETE CONTRACTS-2016	4	22	\$ 403.92	BOISE
2016	MISC CONCRETE CONTRACTS-2016	4	25	\$ 459.00	BOISE
2016	MISC CONCRETE CONTRACTS-2016	4	10	\$ 183.60	BOISE
2016	MISC CONCRETE CONTRACTS-2016	4	22	\$ 403.92	BOISE
2016	MISC CONCRETE CONTRACTS-2016	4	11	\$ 201.96	BOISE
2016	MISC CONCRETE CONTRACTS-2016	4	33	\$ 605.88	BOISE
2016	MISC CONCRETE CONTRACTS-2016	4	21	\$ 385.56	BOISE
2016	MISC CONCRETE CONTRACTS-2016	4	16	\$ 293.76	BOISE
2016	MISC CONCRETE CONTRACTS-2016	4	26	\$ 477.36	BOISE

2016	MISC CONCRETE CONTRACTS-2016	4	22	\$	403.92	BOISE
2016	MISC CONCRETE CONTRACTS-2016	4	4	\$	73.44	BOISE
2016	MISC CONCRETE CONTRACTS-2016	4	10	\$	183.60	BOISE
2016	MISC CONCRETE CONTRACTS-2016	4	14	\$	257.04	BOISE
2016	MISC CONCRETE CONTRACTS-2016	4	16	\$	293.76	BOISE
2016	MISC CONCRETE CONTRACTS-2016	4	12	\$	220.32	BOISE
2016	MISC CONCRETE CONTRACTS-2016	4	17	\$	312.12	BOISE
2016	MISC CONCRETE CONTRACTS-2016	4	15	\$	275.40	BOISE
2016	MISC CONCRETE CONTRACTS-2016	4	10	\$	183.60	BOISE
2016	MISC CONCRETE CONTRACTS-2016	4	5	\$	91.80	BOISE
2016	MISC CONCRETE CONTRACTS-2016	4	5	\$	91.80	BOISE
2016	MISC CONCRETE CONTRACTS-2016	4	6	\$	110.16	BOISE
2016	MISC CONCRETE CONTRACTS-2016	4	5	\$	91.80	BOISE
2016	MISC CONCRETE CONTRACTS-2016	4	19	\$	348.84	BOISE
2016	MISC CONCRETE CONTRACTS-2016	4	22	\$	403.92	BOISE
2016	MISC CONCRETE CONTRACTS-2016	4	18	\$	330.48	BOISE
2016	MISC CONCRETE CONTRACTS-2016	4	63	\$	1,156.68	BOISE
2016	MISC CONCRETE CONTRACTS-2016	4	24	\$	440.64	BOISE
2016	MISC CONCRETE CONTRACTS-2016	4	32	\$	587.52	BOISE
2016	MISC CONCRETE CONTRACTS-2016	4	39	\$	716.04	BOISE
2016	MISC CONCRETE CONTRACTS-2016	4	9	\$	165.24	BOISE
2016	MISC CONCRETE CONTRACTS-2016	4	16	\$	293.76	BOISE
2016	MISC CONCRETE CONTRACTS-2016	4	43	\$	789.48	BOISE
2016	MISC CONCRETE CONTRACTS-2016	4	22	\$	403.92	BOISE
2016	MISC CONCRETE CONTRACTS-2016	4	41	\$	752.76	BOISE
2016	MISC CONCRETE CONTRACTS-2016	4	10	\$	183.60	BOISE
2016	MISC CONCRETE CONTRACTS-2016	4	12	\$	220.32	BOISE
2016	MISC CONCRETE CONTRACTS-2016	4	34	\$	624.24	BOISE
2016	MISC CONCRETE CONTRACTS-2016	4	9	\$	165.24	BOISE
2016	MISC CONCRETE CONTRACTS-2016	4	52	\$	954.72	BOISE
2016	MISC CONCRETE CONTRACTS-2016	4	33	\$	605.88	BOISE
2016	MISC CONCRETE CONTRACTS-2016	4	22	\$	403.92	BOISE
2016	MISC CONCRETE CONTRACTS-2016	4	63	\$	1,156.68	BOISE
2016	MISC CONCRETE CONTRACTS-2016	4	7	\$	128.52	BOISE
2016	MISC CONCRETE CONTRACTS-2016	4	7	\$	128.52	BOISE
2016	MISC CONCRETE CONTRACTS-2016	4	37	\$	679.32	BOISE
2016	MISC CONCRETE CONTRACTS-2016	4	71	\$	1,303.56	BOISE
2016	MISC CONCRETE CONTRACTS-2016	4	63	\$	1,156.68	BOISE
2016	MISC CONCRETE CONTRACTS-2016	4	51	\$	936.36	BOISE
2016	MISC CONCRETE CONTRACTS-2016	4	16	\$	293.76	BOISE
2016	MISC CONCRETE CONTRACTS-2016	4	34	\$	624.24	BOISE
2016	MISC CONCRETE CONTRACTS-2016	4	23	\$	422.28	BOISE
2016	MISC CONCRETE CONTRACTS-2016	4	11	\$	201.96	BOISE
2016	MISC CONCRETE CONTRACTS-2016	4	10	\$	183.60	BOISE
2016	MISC CONCRETE CONTRACTS-2016	4	35	\$	633.42	BOISE
2016	MISC CONCRETE CONTRACTS-2016	4	46	\$	844.56	BOISE
2016	MISC CONCRETE CONTRACTS-2016	4	26	\$	477.36	BOISE
2016	MISC CONCRETE CONTRACTS-2016	4	28	\$	514.08	BOISE
2016	MISC CONCRETE CONTRACTS-2016	4	15	\$	275.40	BOISE
2016	MISC CONCRETE CONTRACTS-2016	4	10	\$	183.60	BOISE

2016	MISC CONCRETE CONTRACTS-2016	4	7	\$	128.52	BOISE
2016	MISC CONCRETE CONTRACTS-2016	4	16	\$	293.76	BOISE
2016	MISC CONCRETE CONTRACTS-2016	4	45	\$	826.20	BOISE
2016	MISC CONCRETE CONTRACTS-2016	4	8	\$	146.88	BOISE
2016	MISC CONCRETE CONTRACTS-2016	4	10	\$	183.60	BOISE
2016	MISC CONCRETE CONTRACTS-2016	4	12	\$	220.32	BOISE
2016	MISC CONCRETE CONTRACTS-2016	4	25	\$	459.00	BOISE
2016	MISC CONCRETE CONTRACTS-2016	4	23	\$	422.28	BOISE
2016	MISC CONCRETE CONTRACTS-2016	4	25	\$	459.00	BOISE
2016	MISC CONCRETE CONTRACTS-2016	4	33	\$	605.88	BOISE
2016	MISC CONCRETE CONTRACTS-2016	4	35	\$	642.60	BOISE
2016	MISC CONCRETE CONTRACTS-2016	4	124	\$	2,276.64	BOISE
2016	MISC CONCRETE CONTRACTS-2016	4	30	\$	550.80	BOISE
2016	MISC CONCRETE CONTRACTS-2016	4	39	\$	716.04	BOISE
2016	MISC CONCRETE CONTRACTS-2016	4	13	\$	238.68	BOISE
2016	MISC CONCRETE CONTRACTS-2016	4	18	\$	330.48	BOISE
2016	MISC CONCRETE CONTRACTS-2016	4	15	\$	275.40	BOISE
2016	MISC CONCRETE CONTRACTS-2016	4	17	\$	312.12	BOISE
2016	MISC CONCRETE CONTRACTS-2016	4	40	\$	734.40	BOISE
2016	MISC CONCRETE CONTRACTS-2016	4	50	\$	918.00	BOISE
2016	MISC CONCRETE CONTRACTS-2016	4	22	\$	403.92	BOISE
2016	MISC CONCRETE CONTRACTS-2016	4	6	\$	110.16	BOISE
2016	MISC CONCRETE CONTRACTS-2016	4	14	\$	257.04	BOISE
2016	MISC CONCRETE CONTRACTS-2016	4	26	\$	477.36	BOISE
2016	MISC CONCRETE CONTRACTS-2016	4	11	\$	201.96	BOISE
2016	MISC CONCRETE CONTRACTS-2016	4	35	\$	642.60	BOISE
2016	MISC CONCRETE CONTRACTS-2016	4	55	\$	1,009.80	BOISE
2016	MISC CONCRETE CONTRACTS-2016	4	32	\$	587.52	BOISE
2016	MISC CONCRETE CONTRACTS-2016	4	16	\$	293.76	BOISE
2016	MISC CONCRETE CONTRACTS-2016	4	15	\$	275.40	BOISE
2016	MISC CONCRETE CONTRACTS-2016	4	18	\$	330.48	BOISE
2016	MISC CONCRETE CONTRACTS-2016	4	18	\$	330.48	BOISE
2016	MISC CONCRETE CONTRACTS-2016	4	12	\$	220.32	BOISE
2016	MISC CONCRETE CONTRACTS-2016	4	14	\$	257.04	BOISE
2016	MISC CONCRETE CONTRACTS-2016	4	30	\$	550.80	BOISE
2016	MISC CONCRETE CONTRACTS-2016	4	24	\$	440.64	BOISE
2016	MISC CONCRETE CONTRACTS-2016	4	57	\$	1,046.52	BOISE
2016	MISC CONCRETE CONTRACTS-2016	4	17	\$	312.12	BOISE
2016	MISC CONCRETE CONTRACTS-2016	4	11	\$	201.96	BOISE
2016	MISC CONCRETE CONTRACTS-2016	4	23	\$	422.28	BOISE
2016	MISC CONCRETE CONTRACTS-2016	4	28	\$	514.08	BOISE
2016	MISC CONCRETE CONTRACTS-2016	4	16	\$	293.76	BOISE
2016	MISC CONCRETE CONTRACTS-2016	4	26	\$	477.36	BOISE
2016	MISC CONCRETE CONTRACTS-2016	4	30	\$	550.80	BOISE
2016	MISC CONCRETE CONTRACTS-2016	4	30	\$	550.80	BOISE
2016	MISC CONCRETE CONTRACTS-2016	4	12	\$	220.32	BOISE
2016	MISC CONCRETE CONTRACTS-2016	4	39	\$	716.04	BOISE
2016	MISC CONCRETE CONTRACTS-2016	4	66	\$	1,211.76	BOISE
2016	MISC CONCRETE CONTRACTS-2016	4	58	\$	1,064.88	BOISE
2016	MISC CONCRETE CONTRACTS-2016	4	85	\$	1,560.60	BOISE

2016	MISC CONCRETE CONTRACTS-2016	4	19	\$	348.84	BOISE
2016	MISC CONCRETE CONTRACTS-2016	4	34	\$	624.24	BOISE
2016	MISC CONCRETE CONTRACTS-2016	4	11	\$	201.96	BOISE
2016	MISC CONCRETE CONTRACTS-2016	4	10	\$	183.60	BOISE
2016	MISC CONCRETE CONTRACTS-2016	4	25	\$	459.00	BOISE
2016	MISC CONCRETE CONTRACTS-2016	4	10	\$	183.60	BOISE
2016	MISC CONCRETE CONTRACTS-2016	4	13	\$	238.68	BOISE
2016	MISC CONCRETE CONTRACTS-2016	4	39	\$	716.04	BOISE
2016	MISC CONCRETE CONTRACTS-2016	4	11	\$	201.96	BOISE
2016	MISC CONCRETE CONTRACTS-2016	4	59	\$	1,083.24	BOISE
2016	MISC CONCRETE CONTRACTS-2016	4	40	\$	734.40	BOISE
2016	MISC CONCRETE CONTRACTS-2016	4	12	\$	220.32	BOISE
2016	MISC CONCRETE CONTRACTS-2016	4	13	\$	238.68	BOISE
2016	MISC CONCRETE CONTRACTS-2016	4	17	\$	312.12	BOISE
2016	MISC CONCRETE CONTRACTS-2016	4	4	\$	73.44	BOISE
2016	MISC CONCRETE CONTRACTS-2016	4	7	\$	128.52	BOISE
2016	MISC CONCRETE CONTRACTS-2016	4	10	\$	183.60	BOISE
2016	MISC CONCRETE CONTRACTS-2016	4	14	\$	257.04	BOISE
2016	MISC CONCRETE CONTRACTS-2016	4	22	\$	403.92	BOISE
2016	MISC CONCRETE CONTRACTS-2016	4	26	\$	477.36	BOISE
2016	MISC CONCRETE CONTRACTS-2016	4	62	\$	1,138.32	BOISE
2016	MISC CONCRETE CONTRACTS-2016	4	32	\$	587.52	BOISE
2016	MISC CONCRETE CONTRACTS-2016	4	43	\$	789.48	BOISE
2016	MISC CONCRETE CONTRACTS-2016	4	31	\$	569.16	BOISE
2016	MISC CONCRETE CONTRACTS-2016	4	16	\$	293.76	BOISE
2016	MISC CONCRETE CONTRACTS-2016	4	19	\$	348.84	BOISE
2016	MISC CONCRETE CONTRACTS-2016	4	31	\$	569.16	BOISE
2016	MISC CONCRETE CONTRACTS-2016	4	14	\$	257.04	BOISE
2016	MISC CONCRETE CONTRACTS-2016	4	27	\$	495.72	BOISE
2016	MISC CONCRETE CONTRACTS-2016	4	33	\$	605.88	BOISE
2016	MISC CONCRETE CONTRACTS-2016	4	31	\$	569.16	BOISE
2016	MISC CONCRETE CONTRACTS-2016	4	28	\$	514.08	BOISE
2016	MISC CONCRETE CONTRACTS-2016	4	18	\$	330.48	BOISE
2016	MISC CONCRETE CONTRACTS-2016	4	30	\$	550.80	BOISE
2016	MISC CONCRETE CONTRACTS-2016	4	17	\$	312.12	BOISE
2016	MISC CONCRETE CONTRACTS-2016	4	47	\$	853.74	BOISE
2016	MISC CONCRETE CONTRACTS-2016	4	13	\$	238.68	BOISE
2016	MISC CONCRETE CONTRACTS-2016	4	27	\$	495.72	BOISE
2016	MISC CONCRETE CONTRACTS-2016	4	47	\$	862.92	BOISE
2016	MISC CONCRETE CONTRACTS-2016	4	17	\$	312.12	BOISE
2016	MISC CONCRETE CONTRACTS-2016	4	20	\$	367.20	BOISE
2016	MISC CONCRETE CONTRACTS-2016	4	27	\$	495.72	BOISE
2016	MISC CONCRETE CONTRACTS-2016	4	8	\$	146.88	BOISE
2016	MISC CONCRETE CONTRACTS-2016	4	21	\$	385.56	BOISE
2016	MISC CONCRETE CONTRACTS-2016	4	12	\$	220.32	BOISE
2016	MISC CONCRETE CONTRACTS-2016	4	34	\$	624.24	BOISE
2016	MISC CONCRETE CONTRACTS-2016	4	85	\$	1,560.60	BOISE
2016	MISC CONCRETE CONTRACTS-2016	4	19	\$	348.84	BOISE
2016	MISC CONCRETE CONTRACTS-2016	4	19	\$	348.84	BOISE
2016	MISC CONCRETE CONTRACTS-2016	4	22	\$	403.92	BOISE

2016	MISC CONCRETE CONTRACTS-2016	4	33	\$	605.88	BOISE
2016	MISC CONCRETE CONTRACTS-2016	4	37	\$	679.32	BOISE
2016	MISC CONCRETE CONTRACTS-2016	4	29	\$	532.44	BOISE
2016	MISC CONCRETE CONTRACTS-2016	4	75	\$	1,377.00	BOISE
2016	MISC CONCRETE CONTRACTS-2016	4	16	\$	293.76	BOISE
2016	MISC CONCRETE CONTRACTS-2016	4	38	\$	697.68	BOISE
2016	MISC CONCRETE CONTRACTS-2016	4	33	\$	605.88	BOISE
2016	MISC CONCRETE CONTRACTS-2016	4	56	\$	1,028.16	BOISE
2016	MISC CONCRETE CONTRACTS-2016	4	20	\$	367.20	BOISE
2016	MISC CONCRETE CONTRACTS-2016	4	9	\$	165.24	BOISE
2016	MISC CONCRETE CONTRACTS-2016	4	27	\$	495.72	BOISE
2016	MISC CONCRETE CONTRACTS-2016	4	28	\$	514.08	BOISE
2016	MISC CONCRETE CONTRACTS-2016	4	16	\$	293.76	BOISE
2016	MISC CONCRETE CONTRACTS-2016	4	15	\$	275.40	BOISE
2016	MISC CONCRETE CONTRACTS-2016	4	22	\$	403.92	BOISE
2016	MISC CONCRETE CONTRACTS-2016	4	25	\$	459.00	BOISE
2016	MISC CONCRETE CONTRACTS-2016	4	17	\$	312.12	BOISE
2016	MISC CONCRETE CONTRACTS-2016	4	10	\$	183.60	BOISE
2016	MISC CONCRETE CONTRACTS-2016	4	47	\$	862.92	BOISE
2016	MISC CONCRETE CONTRACTS-2016	4	77	\$	1,413.72	BOISE
2016	MISC CONCRETE CONTRACTS-2016	4	62	\$	1,138.32	BOISE
2016	MISC CONCRETE CONTRACTS-2016	4	45	\$	826.20	BOISE
2016	MISC CONCRETE CONTRACTS-2016	4	34	\$	624.24	BOISE
2016	MISC CONCRETE CONTRACTS-2016	4	10	\$	183.60	BOISE
2016	MISC CONCRETE CONTRACTS-2016	4	42	\$	771.12	BOISE
2016	MISC CONCRETE CONTRACTS-2016	4	34	\$	624.24	BOISE
2016	MISC CONCRETE CONTRACTS-2016	4	33	\$	605.88	BOISE
2016	MISC CONCRETE CONTRACTS-2016	4	28	\$	514.08	BOISE
2016	MISC CONCRETE CONTRACTS-2016	4	21	\$	385.56	BOISE
2016	MISC CONCRETE CONTRACTS-2016	4	52	\$	954.72	BOISE
2016	MISC CONCRETE CONTRACTS-2016	4	22	\$	403.92	BOISE
2016	MISC CONCRETE CONTRACTS-2016	4	32	\$	587.52	BOISE
2016	MISC CONCRETE CONTRACTS-2016	4	41	\$	752.76	BOISE
2016	MISC CONCRETE CONTRACTS-2016	4	21	\$	385.56	BOISE
2016	MISC CONCRETE CONTRACTS-2016	4	14	\$	257.04	BOISE
2016	MISC CONCRETE CONTRACTS-2016	4	24	\$	440.64	BOISE
2016	MISC CONCRETE CONTRACTS-2016	4	20	\$	367.20	BOISE
2016	MISC CONCRETE CONTRACTS-2016	4	18	\$	330.48	BOISE
2016	MISC CONCRETE CONTRACTS-2016	4	42	\$	771.12	BOISE
2016	MISC CONCRETE CONTRACTS-2016	4	82	\$	1,505.52	BOISE
2016	MISC CONCRETE CONTRACTS-2016	4	12	\$	220.32	BOISE
2016	MISC CONCRETE CONTRACTS-2016	4	94	\$	1,725.84	BOISE
2016	MISC CONCRETE CONTRACTS-2016	4	52	\$	954.72	BOISE
2016	MISC CONCRETE CONTRACTS-2016	4	8	\$	146.88	BOISE
2016	MISC CONCRETE CONTRACTS-2016	4	11	\$	201.96	BOISE
2016	MISC CONCRETE CONTRACTS-2016	4	37	\$	679.32	BOISE
2016	MISC CONCRETE CONTRACTS-2016	4	22	\$	403.92	BOISE
2016	MISC CONCRETE CONTRACTS-2016	4	22	\$	403.92	BOISE
2016	MISC CONCRETE CONTRACTS-2016	4	16	\$	293.76	BOISE
2016	MISC CONCRETE CONTRACTS-2016	4	29	\$	532.44	BOISE

2016	MISC CONCRETE CONTRACTS-2016	4	62	\$	1,138.32	BOISE
2016	MISC CONCRETE CONTRACTS-2016	4	14	\$	257.04	BOISE
2016	MISC CONCRETE CONTRACTS-2016	4	25	\$	459.00	BOISE
2016	MISC CONCRETE CONTRACTS-2016	4	47	\$	862.92	BOISE
2016	MISC CONCRETE CONTRACTS-2016	4	2	\$	36.72	BOISE
2016	MISC CONCRETE CONTRACTS-2016	4	34	\$	624.24	BOISE
2016	MISC CONCRETE CONTRACTS-2016	4	6	\$	110.16	BOISE
2016	MISC CONCRETE CONTRACTS-2016	4	28	\$	514.08	BOISE
2016	MISC CONCRETE CONTRACTS-2016	4	38	\$	697.68	BOISE
2016	MISC CONCRETE CONTRACTS-2016	4	10	\$	183.60	BOISE
2016	MISC CONCRETE CONTRACTS-2016	4	15	\$	275.40	BOISE
2016	MISC CONCRETE CONTRACTS-2016	4	8	\$	146.88	BOISE
2016	MISC CONCRETE CONTRACTS-2016	4	4	\$	73.44	BOISE
2016	MISC CONCRETE CONTRACTS-2016	4	14	\$	257.04	BOISE
2016	MISC CONCRETE CONTRACTS-2016	4	10	\$	183.60	BOISE
2016	MISC CONCRETE CONTRACTS-2016	4	24	\$	440.64	BOISE
2016	MISC CONCRETE CONTRACTS-2016	4	10	\$	183.60	BOISE
2016	MISC CONCRETE CONTRACTS-2016	4	26	\$	477.36	BOISE
2016	MISC CONCRETE CONTRACTS-2016	4	0	\$	-	BOISE
2016	MISC CONCRETE CONTRACTS-2016	4	10	\$	183.60	BOISE
2016	MISC CONCRETE CONTRACTS-2016	4	16	\$	293.76	BOISE
2016	MISC CONCRETE CONTRACTS-2016	4	12	\$	220.32	BOISE
2016	MISC CONCRETE CONTRACTS-2016	4	15	\$	275.40	BOISE
2016	MISC CONCRETE CONTRACTS-2016	4	0	\$	-	BOISE
2016	MISC CONCRETE CONTRACTS-2016	4	106	\$	1,946.16	BOISE
2016	MISC CONCRETE CONTRACTS-2016	4	0	\$	-	BOISE
2016	MISC CONCRETE CONTRACTS-2016	4	78	\$	1,432.08	BOISE
2016	MISC CONCRETE CONTRACTS-2016	4	25	\$	459.00	BOISE
2016	MISC CONCRETE CONTRACTS-2016	4	28	\$	514.08	BOISE
2016	MISC CONCRETE CONTRACTS-2016	4	69	\$	1,266.84	BOISE
2016	MISC CONCRETE CONTRACTS-2016	4	83	\$	1,523.88	BOISE
2016	MISC CONCRETE CONTRACTS-2016	4	18	\$	330.48	BOISE
2016	MISC CONCRETE CONTRACTS-2016	4	17	\$	312.12	BOISE
2016	MISC CONCRETE CONTRACTS-2016	4	73	\$	1,340.28	BOISE
2016	MISC CONCRETE CONTRACTS-2016	4	29	\$	532.44	BOISE
2016	MISC CONCRETE CONTRACTS-2016	4	15	\$	275.40	BOISE
2016	MISC CONCRETE CONTRACTS-2016	4	85	\$	1,560.60	BOISE
2016	MISC CONCRETE CONTRACTS-2016	4	86	\$	1,578.96	BOISE
2016	MISC CONCRETE CONTRACTS-2016	4	10	\$	183.60	BOISE
2016	MISC CONCRETE CONTRACTS-2016	4	52	\$	954.72	BOISE
2016	MISC CONCRETE CONTRACTS-2016	4	67	\$	1,230.12	BOISE
2016	MISC CONCRETE CONTRACTS-2016	4	18	\$	330.48	BOISE
2016	MISC CONCRETE CONTRACTS-2016	4	34	\$	624.24	BOISE
2016	MISC CONCRETE CONTRACTS-2016	4	52	\$	954.72	BOISE
2016	MISC CONCRETE CONTRACTS-2016	4	42	\$	771.12	BOISE
2016	MISC CONCRETE CONTRACTS-2016	4	13	\$	238.68	BOISE
2016	MISC CONCRETE CONTRACTS-2016	4	19	\$	348.84	BOISE
2016	MISC CONCRETE CONTRACTS-2016	4	26	\$	477.36	BOISE
2016	MISC CONCRETE CONTRACTS-2016	4	0	\$	-	BOISE
2016	MISC CONCRETE CONTRACTS-2016	4	37	\$	679.32	BOISE

2016	MISC CONCRETE CONTRACTS-2016	4	15	\$	275.40	BOISE
2016	MISC CONCRETE CONTRACTS-2016	4	54	\$	991.44	BOISE
2016	MISC CONCRETE CONTRACTS-2016	4	51	\$	936.36	BOISE
2016	MISC CONCRETE CONTRACTS-2016	4	37	\$	679.32	BOISE
2016	MISC CONCRETE CONTRACTS-2016	4	10	\$	183.60	BOISE
2016	MISC CONCRETE CONTRACTS-2016	4	9	\$	165.24	BOISE
2016	MISC CONCRETE CONTRACTS-2016	4	75	\$	1,377.00	BOISE
2016	MISC CONCRETE CONTRACTS-2016	4	0	\$	-	BOISE
2016	MISC CONCRETE CONTRACTS-2016	4	2	\$	36.72	BOISE
2016	MISC CONCRETE CONTRACTS-2016	4	84	\$	1,542.24	BOISE
2016	MISC CONCRETE CONTRACTS-2016	4	84	\$	1,542.24	BOISE
2016	MISC CONCRETE CONTRACTS-2016	4	20	\$	367.20	BOISE
2016	MISC CONCRETE CONTRACTS-2016	4	38	\$	697.68	BOISE
2016	MISC CONCRETE CONTRACTS-2016	4	18	\$	330.48	BOISE
2016	MISC CONCRETE CONTRACTS-2016	4	16	\$	293.76	BOISE
2016	MISC CONCRETE CONTRACTS-2016	4	8	\$	146.88	BOISE
2016	MISC CONCRETE CONTRACTS-2016	4	28	\$	514.08	BOISE
2016	MISC CONCRETE CONTRACTS-2016	4	23	\$	422.28	BOISE
2016	MISC CONCRETE CONTRACTS-2016	4	28	\$	514.08	BOISE
2016	MISC CONCRETE CONTRACTS-2016	4	69	\$	1,266.84	BOISE
2016	MISC CONCRETE CONTRACTS-2016	4	44	\$	807.84	BOISE
2016	MISC CONCRETE CONTRACTS-2016	4	28	\$	514.08	BOISE
2016	MISC CONCRETE CONTRACTS-2016	4	41	\$	752.76	BOISE
2016	MISC CONCRETE CONTRACTS-2016	4	24	\$	440.64	BOISE
2016	MISC CONCRETE CONTRACTS-2016	4	43	\$	789.48	BOISE
2016	MISC CONCRETE CONTRACTS-2016	4	32	\$	587.52	BOISE
2016	MISC CONCRETE CONTRACTS-2016	4	9	\$	165.24	BOISE
2016	MISC CONCRETE CONTRACTS-2016	4	10	\$	183.60	BOISE
2016	MISC CONCRETE CONTRACTS-2016	4	45	\$	826.20	BOISE
2016	MISC CONCRETE CONTRACTS-2016	4	37	\$	679.32	BOISE
2016	MISC CONCRETE CONTRACTS-2016	4	21	\$	385.56	BOISE
2016	MISC CONCRETE CONTRACTS-2016	5	16	\$	367.20	BOISE
2016	MISC CONCRETE CONTRACTS-2016	5	16	\$	367.20	BOISE
2016	MISC CONCRETE CONTRACTS-2016	5	55	\$	1,250.78	BOISE
2016	MISC CONCRETE CONTRACTS-2016	5	15	\$	344.25	BOISE
2016	MISC CONCRETE CONTRACTS-2016	5	24	\$	550.80	BOISE
2016	MISC CONCRETE CONTRACTS-2016	5	11	\$	252.45	BOISE
2016	MISC CONCRETE CONTRACTS-2016	5	23	\$	527.85	BOISE
2016	MISC CONCRETE CONTRACTS-2016	5	10	\$	229.50	BOISE
2016	MISC CONCRETE CONTRACTS-2016	5	26	\$	596.70	BOISE
2016	MISC CONCRETE CONTRACTS-2016	5	10	\$	229.50	BOISE
2016	MISC CONCRETE CONTRACTS-2016	5	24	\$	550.80	BOISE
2016	MISC CONCRETE CONTRACTS-2016	5	33	\$	757.35	BOISE
2016	MISC CONCRETE CONTRACTS-2016	5	12	\$	263.93	BOISE
2016	MISC CONCRETE CONTRACTS-2016	5	29	\$	654.08	BOISE
2016	MISC CONCRETE CONTRACTS-2016	5	20	\$	459.00	BOISE
2016	MISC CONCRETE CONTRACTS-2016	5	12	\$	275.40	BOISE
2016	MISC CONCRETE CONTRACTS-2016	5	15	\$	344.25	BOISE
2016	MISC CONCRETE CONTRACTS-2016	5	176	\$	4,039.20	BOISE
2016	MISC CONCRETE CONTRACTS-2016	5	136	\$	3,121.20	BOISE

2016	MISC CONCRETE CONTRACTS-2016	5	70	\$	1,606.50	BOISE
2016	MISC CONCRETE CONTRACTS-2016	5	52	\$	1,193.40	BOISE
2016	MISC CONCRETE CONTRACTS-2016	5	46	\$	1,055.70	BOISE
2016	MISC CONCRETE CONTRACTS-2016	5	18	\$	413.10	BOISE
2016	MISC CONCRETE CONTRACTS-2016	5	30	\$	688.50	BOISE
2016	MISC CONCRETE CONTRACTS-2016	5	42	\$	963.90	BOISE
2016	MISC CONCRETE CONTRACTS-2016	5	16	\$	367.20	BOISE
2016	MISC CONCRETE CONTRACTS-2016	5	25	\$	573.75	BOISE
2016	MISC CONCRETE CONTRACTS-2016	5	42	\$	963.90	BOISE
2016	MISC CONCRETE CONTRACTS-2016	5	10	\$	229.50	BOISE
2016	MISC CONCRETE CONTRACTS-2016	5	63	\$	1,445.85	BOISE
2016	MISC CONCRETE CONTRACTS-2016	5	37	\$	849.15	BOISE
2016	MISC CONCRETE CONTRACTS-2016	5	10	\$	229.50	BOISE
2016	MISC CONCRETE CONTRACTS-2016	5	15	\$	344.25	BOISE
2016	MISC CONCRETE CONTRACTS-2016	5	20	\$	459.00	BOISE
2016	MISC CONCRETE CONTRACTS-2016	5	46	\$	1,055.70	BOISE
2016	MISC CONCRETE CONTRACTS-2016	5	37	\$	849.15	BOISE
2016	MISC CONCRETE CONTRACTS-2016	5	32	\$	734.40	BOISE
2016	MISC CONCRETE CONTRACTS-2016	5	31	\$	711.45	BOISE
2016	MISC CONCRETE CONTRACTS-2016	5	46	\$	1,055.70	BOISE
2016	MISC CONCRETE CONTRACTS-2016	5	61	\$	1,399.95	BOISE
2016	MISC CONCRETE CONTRACTS-2016	5	30	\$	688.50	BOISE
2016	MISC CONCRETE CONTRACTS-2016	5	17	\$	390.15	BOISE
2016	MISC CONCRETE CONTRACTS-2016	5	22	\$	504.90	BOISE
2016	MISC CONCRETE CONTRACTS-2016	5	32	\$	734.40	BOISE
2016	MISC CONCRETE CONTRACTS-2016	5	18	\$	413.10	BOISE
2016	MISC CONCRETE CONTRACTS-2016	5	21	\$	481.95	BOISE
2016	MISC CONCRETE CONTRACTS-2016	5	60	\$	1,377.00	BOISE
2016	MISC CONCRETE CONTRACTS-2016	5	6	\$	137.70	BOISE
2016	MISC CONCRETE CONTRACTS-2016	5	18	\$	413.10	BOISE
2016	MISC CONCRETE CONTRACTS-2016	5	15	\$	344.25	BOISE
2016	MISC CONCRETE CONTRACTS-2016	5	28	\$	642.60	BOISE
2016	MISC CONCRETE CONTRACTS-2016	5	30	\$	688.50	BOISE
2016	MISC CONCRETE CONTRACTS-2016	5	67	\$	1,537.65	BOISE
2016	MISC CONCRETE CONTRACTS-2016	5	67	\$	1,537.65	BOISE
2016	MISC CONCRETE CONTRACTS-2016	5	11	\$	252.45	BOISE
2016	MISC CONCRETE CONTRACTS-2016	5	60	\$	1,377.00	BOISE
2016	MISC CONCRETE CONTRACTS-2016	5	50	\$	1,147.50	BOISE
2016	MISC CONCRETE CONTRACTS-2016	5	22	\$	504.90	BOISE
2016	MISC CONCRETE CONTRACTS-2016	5	20	\$	459.00	BOISE
2016	MISC CONCRETE CONTRACTS-2016	5	25	\$	573.75	BOISE
2016	MISC CONCRETE CONTRACTS-2016	5	17	\$	390.15	BOISE
2016	MISC CONCRETE CONTRACTS-2016	5	6	\$	137.70	BOISE
2016	MISC CONCRETE CONTRACTS-2016	5	11	\$	252.45	BOISE
2016	MISC CONCRETE CONTRACTS-2016	5	10	\$	229.50	BOISE
2016	MISC CONCRETE CONTRACTS-2016	5	32	\$	734.40	BOISE
2016	MISC CONCRETE CONTRACTS-2016	5	15	\$	344.25	BOISE
2016	MISC CONCRETE CONTRACTS-2016	5	14	\$	321.30	BOISE
2016	MISC CONCRETE CONTRACTS-2016	5	40	\$	918.00	BOISE
2016	MISC CONCRETE CONTRACTS-2016	5	56	\$	1,285.20	BOISE

2016	MISC CONCRETE CONTRACTS-2016	5	24	\$	550.80	BOISE
2016	MISC CONCRETE CONTRACTS-2016	5	30	\$	688.50	BOISE
2016	MISC CONCRETE CONTRACTS-2016	5	102	\$	2,340.90	BOISE
2016	MISC CONCRETE CONTRACTS-2016	5	25	\$	573.75	BOISE
2016	MISC CONCRETE CONTRACTS-2016	5	50	\$	1,147.50	BOISE
2016	MISC CONCRETE CONTRACTS-2016	5	6	\$	137.70	BOISE
2016	MISC CONCRETE CONTRACTS-2016	5	110	\$	2,524.50	BOISE
2016	MISC CONCRETE CONTRACTS-2016	5	30	\$	688.50	BOISE
2016	MISC CONCRETE CONTRACTS-2016	5	30	\$	688.50	BOISE
2016	MISC CONCRETE CONTRACTS-2016	5	110	\$	2,524.50	BOISE
2016	MISC CONCRETE CONTRACTS-2016	5	60	\$	1,377.00	BOISE
2016	MISC CONCRETE CONTRACTS-2016	5	20	\$	459.00	BOISE
2016	MISC CONCRETE CONTRACTS-2016	5	18	\$	413.10	BOISE
2016	MISC CONCRETE CONTRACTS-2016	5	45	\$	1,032.75	BOISE
2016	MISC CONCRETE CONTRACTS-2016	5	24	\$	550.80	BOISE
2016	MISC CONCRETE CONTRACTS-2016	5	12	\$	275.40	BOISE
2016	MISC CONCRETE CONTRACTS-2016	5	20	\$	459.00	BOISE
2016	MISC CONCRETE CONTRACTS-2016	5	55	\$	1,262.25	BOISE
2016	MISC CONCRETE CONTRACTS-2016	5	23	\$	527.85	BOISE
2016	MISC CONCRETE CONTRACTS-2016	5	22	\$	504.90	BOISE
2016	MISC CONCRETE CONTRACTS-2016	5	24	\$	550.80	BOISE
2016	MISC CONCRETE CONTRACTS-2016	5	34	\$	780.30	BOISE
2016	MISC CONCRETE CONTRACTS-2016	5	42	\$	963.90	BOISE
2016	MISC CONCRETE CONTRACTS-2016	5	14	\$	321.30	BOISE
2016	MISC CONCRETE CONTRACTS-2016	5	12	\$	275.40	BOISE
2016	MISC CONCRETE CONTRACTS-2016	5	18	\$	413.10	BOISE
2016	MISC CONCRETE CONTRACTS-2016	5	10	\$	229.50	BOISE
2016	MISC CONCRETE CONTRACTS-2016	5	34	\$	780.30	BOISE
2016	MISC CONCRETE CONTRACTS-2016	5	5	\$	114.75	BOISE
2016	MISC CONCRETE CONTRACTS-2016	6	190	\$	5,232.60	BOISE
2016	MISC CONCRETE CONTRACTS-2016	6	50	\$	1,377.00	BOISE
2016	MISC CONCRETE CONTRACTS-2016	6	50	\$	1,377.00	BOISE
2016	MISC CONCRETE CONTRACTS-2016	6	50	\$	1,377.00	BOISE
2016	MISC CONCRETE CONTRACTS-2016	6	45	\$	1,239.30	BOISE
2016	MISC CONCRETE CONTRACTS-2016	6	23	\$	633.42	BOISE
2016	MISC CONCRETE CONTRACTS-2016	6	56	\$	1,542.24	BOISE
2016	MISC CONCRETE CONTRACTS-2016	6	13	\$	358.02	BOISE
2016	MISC CONCRETE CONTRACTS-2016	6	20	\$	550.80	BOISE
2016	MISC CONCRETE CONTRACTS-2016	6	15	\$	413.10	BOISE
2016	MISC CONCRETE CONTRACTS-2016	6	10	\$	275.40	BOISE
2016	MISC CONCRETE CONTRACTS-2016	6	12	\$	330.48	BOISE
2016	MISC CONCRETE CONTRACTS-2016	6	24	\$	660.96	BOISE
2016	MISC CONCRETE CONTRACTS-2016	6	85	\$	2,340.90	BOISE
2016	MISC CONCRETE CONTRACTS-2016	6	67	\$	1,845.18	BOISE
2016	MISC CONCRETE CONTRACTS-2016	6	12	\$	330.48	BOISE
2016	MISC CONCRETE CONTRACTS-2016	6	42	\$	1,156.68	BOISE
2016	MISC CONCRETE CONTRACTS-2016	6	8	\$	220.32	BOISE
2016	MISC CONCRETE CONTRACTS-2016	6	33	\$	908.82	BOISE
2016	MISC CONCRETE CONTRACTS-2016	6	41	\$	1,129.14	BOISE
2016	MISC CONCRETE CONTRACTS-2016	6	0	\$	-	BOISE

2016	MISC CONCRETE CONTRACTS-2016	6	19	\$	523.26	BOISE
2016	MISC CONCRETE CONTRACTS-2016	6	10	\$	275.40	BOISE
2016	MISC CONCRETE CONTRACTS-2016	6	41	\$	1,129.14	BOISE
2016	MISC CONCRETE CONTRACTS-2016	6	22	\$	605.88	BOISE
2016	MISC CONCRETE CONTRACTS-2016	6	38	\$	1,046.52	BOISE
2016	MISC CONCRETE CONTRACTS-2016	6	20	\$	550.80	BOISE
2016	MISC CONCRETE CONTRACTS-2016	6	11	\$	302.94	BOISE
2016	MISC CONCRETE CONTRACTS-2016	6	28	\$	771.12	BOISE
2016	MISC CONCRETE CONTRACTS-2016	6	8	\$	220.32	BOISE
2016	MISC CONCRETE CONTRACTS-2016	6	18	\$	495.72	BOISE
2016	MISC CONCRETE CONTRACTS-2016	6	30	\$	826.20	BOISE
2016	MISC CONCRETE CONTRACTS-2016	6	24	\$	660.96	BOISE
2016	MISC CONCRETE CONTRACTS-2016	6	40	\$	1,101.60	BOISE
2016	MISC CONCRETE CONTRACTS-2016	6	9	\$	247.86	BOISE
2016	MISC CONCRETE CONTRACTS-2016	6	9	\$	247.86	BOISE
2016	MISC CONCRETE CONTRACTS-2016	6	16	\$	440.64	BOISE
2016	MISC CONCRETE CONTRACTS-2016	6	23	\$	633.42	BOISE
2016	MISC CONCRETE CONTRACTS-2016	6	16	\$	440.64	BOISE
2016	MISC CONCRETE CONTRACTS-2016	6	16	\$	440.64	BOISE
2016	MISC CONCRETE CONTRACTS-2016	6	20	\$	550.80	BOISE
2016	MISC CONCRETE CONTRACTS-2016	6	3	\$	82.62	BOISE
2016	MISC CONCRETE CONTRACTS-2016	6	15	\$	413.10	BOISE
2016	MISC CONCRETE CONTRACTS-2016	6	6	\$	165.24	BOISE
2016	MISC CONCRETE CONTRACTS-2016	6	20	\$	550.80	BOISE
2016	MISC CONCRETE CONTRACTS-2016	6	20	\$	550.80	BOISE
2016	MISC CONCRETE CONTRACTS-2016	6	66	\$	1,817.64	BOISE
2016	MISC CONCRETE CONTRACTS-2016	6	50	\$	1,377.00	BOISE
2016	MISC CONCRETE CONTRACTS-2016	6	322	\$	8,867.88	BOISE
2016	MISC CONCRETE CONTRACTS-2016	6	42	\$	1,156.68	BOISE
2016	MISC CONCRETE CONTRACTS-2016	6	45	\$	1,239.30	BOISE
2016	MISC CONCRETE CONTRACTS-2016	6	12	\$	330.48	BOISE
2016	MISC CONCRETE CONTRACTS-2016	6	41	\$	1,129.14	BOISE
2016	MISC CONCRETE CONTRACTS-2016	6	22	\$	605.88	BOISE
2016	MISC CONCRETE CONTRACTS-2016	6	130	\$	3,580.20	BOISE
2016	MISC CONCRETE CONTRACTS-2016	6	6	\$	165.24	BOISE
2016	MISC CONCRETE CONTRACTS-2016	6	47	\$	1,294.38	BOISE
2016	MISC CONCRETE CONTRACTS-2016	6	31	\$	853.74	BOISE
2016	MISC CONCRETE CONTRACTS-2016	6	14	\$	385.56	BOISE
2016	MISC CONCRETE CONTRACTS-2016	6	53	\$	1,459.62	BOISE
2016	MISC CONCRETE CONTRACTS-2016	6	13	\$	358.02	BOISE
2016	MISC CONCRETE CONTRACTS-2016	6	32	\$	881.28	BOISE
2016	MISC CONCRETE CONTRACTS-2016	6	18	\$	495.72	BOISE
2016	MISC CONCRETE CONTRACTS-2016	6	22	\$	605.88	BOISE
2016	MISC CONCRETE CONTRACTS-2016	6	12	\$	330.48	BOISE
2016	MISC CONCRETE CONTRACTS-2016	6	45	\$	1,239.30	BOISE
2016	MISC CONCRETE CONTRACTS-2016	6	12	\$	330.48	BOISE
2016	MISC CONCRETE CONTRACTS-2016	6	25	\$	688.50	BOISE
2016	MISC CONCRETE CONTRACTS-2016	6	37	\$	1,018.98	BOISE
2016	MISC CONCRETE CONTRACTS-2016	6	17	\$	468.18	BOISE
2016	MISC CONCRETE CONTRACTS-2016	6	52	\$	1,432.08	BOISE

2016	MISC CONCRETE CONTRACTS-2016	6	19	\$	523.26	BOISE
2016	MISC CONCRETE CONTRACTS-2016	6	25	\$	688.50	BOISE
2016	MISC CONCRETE CONTRACTS-2016	6	19	\$	523.26	BOISE
2016	MISC CONCRETE CONTRACTS-2016	6	15	\$	413.10	BOISE
2016	MISC CONCRETE CONTRACTS-2016	6	13	\$	358.02	BOISE
2016	MISC CONCRETE CONTRACTS-2016	6	16	\$	440.64	BOISE
2016	MISC CONCRETE CONTRACTS-2016	6	6	\$	165.24	BOISE
2016	MISC CONCRETE CONTRACTS-2016	6	3	\$	82.62	BOISE
2016	MISC CONCRETE CONTRACTS-2016	6	46	\$	1,266.84	BOISE
2016	MISC CONCRETE CONTRACTS-2016	6	30	\$	826.20	BOISE
2016	MISC CONCRETE CONTRACTS-2016	6	58	\$	1,597.32	BOISE
2016	MISC CONCRETE CONTRACTS-2016	6	11	\$	302.94	BOISE
2016	MISC CONCRETE CONTRACTS-2016	6	21	\$	578.34	BOISE
2016	MISC CONCRETE CONTRACTS-2016	6	19	\$	523.26	BOISE
2016	MISC CONCRETE CONTRACTS-2016	6	51	\$	1,404.54	BOISE
2016	MISC CONCRETE CONTRACTS-2016	6	63	\$	1,735.02	BOISE
2016	MISC CONCRETE CONTRACTS-2016	6	38	\$	1,046.52	BOISE
2016	MISC CONCRETE CONTRACTS-2016	6	30	\$	826.20	BOISE
2016	MISC CONCRETE CONTRACTS-2016	6	24	\$	660.96	BOISE
2016	MISC CONCRETE CONTRACTS-2016	6	30	\$	826.20	BOISE
2016	MISC CONCRETE CONTRACTS-2016	6	25	\$	688.50	BOISE
2016	MISC CONCRETE CONTRACTS-2016	6	56	\$	1,542.24	BOISE
2016	MISC CONCRETE CONTRACTS-2016	6	38	\$	1,046.52	BOISE
2016	MISC CONCRETE CONTRACTS-2016	6	36	\$	991.44	BOISE
2016	MISC CONCRETE CONTRACTS-2016	6	42	\$	1,156.68	BOISE
2016	MISC CONCRETE CONTRACTS-2016	6	8	\$	220.32	BOISE
2016	MISC CONCRETE CONTRACTS-2016	6	35	\$	963.90	BOISE
2016	MISC CONCRETE CONTRACTS-2016	6	24	\$	660.96	BOISE
2016	MISC CONCRETE CONTRACTS-2016	6	24	\$	660.96	BOISE
2016	MISC CONCRETE CONTRACTS-2016	6	17	\$	468.18	BOISE
2016	MISC CONCRETE CONTRACTS-2016	6	48	\$	1,321.92	BOISE
2016	MISC CONCRETE CONTRACTS-2016	6	16	\$	440.64	BOISE
2016	MISC CONCRETE CONTRACTS-2016	6	28	\$	771.12	BOISE
2016	MISC CONCRETE CONTRACTS-2016	6	68	\$	1,872.72	BOISE
2016	MISC CONCRETE CONTRACTS-2016	6	18	\$	495.72	BOISE
2016	MISC CONCRETE CONTRACTS-2016	6	13	\$	358.02	BOISE
2016	MISC CONCRETE CONTRACTS-2016	6	40	\$	1,101.60	BOISE
2016	MISC CONCRETE CONTRACTS-2016	6	30	\$	826.20	BOISE
2016	MISC CONCRETE CONTRACTS-2016	6	62	\$	1,707.48	BOISE
2016	MISC CONCRETE CONTRACTS-2016	6	67	\$	1,845.18	BOISE
2016	MISC CONCRETE CONTRACTS-2016	6	62	\$	1,707.48	BOISE
2016	MISC CONCRETE CONTRACTS-2016	6	18	\$	495.72	BOISE
2016	MISC CONCRETE CONTRACTS-2016	6	0	\$	-	BOISE
2016	MISC CONCRETE CONTRACTS-2016	6	66	\$	1,817.64	BOISE
2016	MISC CONCRETE CONTRACTS-2016	6	8	\$	220.32	BOISE
2016	MISC CONCRETE CONTRACTS-2016	6	258	\$	7,105.32	BOISE
2016	MISC CONCRETE CONTRACTS-2016	6	7	\$	192.78	BOISE
2016	MISC CONCRETE CONTRACTS-2016	6	5	\$	137.70	BOISE
2016	MISC CONCRETE CONTRACTS-2016	6	62	\$	1,707.48	BOISE
2016	MISC CONCRETE CONTRACTS-2016	6	8	\$	220.32	BOISE

2016	MISC CONCRETE CONTRACTS-2016	6	17	\$	468.18	BOISE
2016	MISC CONCRETE CONTRACTS-2016	6	32	\$	881.28	BOISE
2016	MISC CONCRETE CONTRACTS-2016	6	36	\$	991.44	BOISE
2016	MISC CONCRETE CONTRACTS-2016	6	18	\$	495.72	BOISE
2016	MISC CONCRETE CONTRACTS-2016	6	49	\$	1,349.46	BOISE
2016	MISC CONCRETE CONTRACTS-2016	6	10	\$	275.40	BOISE
2016	MISC CONCRETE CONTRACTS-2016	6	61	\$	1,679.94	BOISE
2016	MISC CONCRETE CONTRACTS-2016	6	22	\$	605.88	BOISE
2016	MISC CONCRETE CONTRACTS-2016	6	9	\$	247.86	BOISE
2016	MISC CONCRETE CONTRACTS-2016	6	30	\$	826.20	BOISE
2016	MISC CONCRETE CONTRACTS-2016	6	8	\$	220.32	BOISE
2016	MISC CONCRETE CONTRACTS-2016	6	12	\$	330.48	BOISE
2016	MISC CONCRETE CONTRACTS-2016	6	36	\$	991.44	BOISE
2016	MISC CONCRETE CONTRACTS-2016	6	47	\$	1,294.38	BOISE
2016	MISC CONCRETE CONTRACTS-2016	6	6	\$	165.24	BOISE
2016	MISC CONCRETE CONTRACTS-2016	6	8	\$	220.32	BOISE
2016	MISC CONCRETE CONTRACTS-2016	6	38	\$	1,046.52	BOISE
2016	MISC CONCRETE CONTRACTS-2016	6	56	\$	1,542.24	BOISE
2016	MISC CONCRETE CONTRACTS-2016	6	100	\$	2,754.00	BOISE
2016	MISC CONCRETE CONTRACTS-2016	6	56	\$	1,542.24	BOISE
2016	MISC CONCRETE CONTRACTS-2016	6	30	\$	826.20	BOISE
2016	MISC CONCRETE CONTRACTS-2016	6	30	\$	826.20	BOISE
2016	MISC CONCRETE CONTRACTS-2016	6	94	\$	2,588.76	BOISE
2016	MISC CONCRETE CONTRACTS-2016	6	33	\$	908.82	BOISE
2016	MISC CONCRETE CONTRACTS-2016	6	120	\$	3,304.80	BOISE
2016	MISC CONCRETE CONTRACTS-2016	6	30	\$	826.20	BOISE
2016	MISC CONCRETE CONTRACTS-2016	6	30	\$	826.20	BOISE
2016	MISC CONCRETE CONTRACTS-2016	6	80	\$	2,203.20	BOISE
2016	MISC CONCRETE CONTRACTS-2016	6	82	\$	2,258.28	BOISE
2016	MISC CONCRETE CONTRACTS-2016	6	5	\$	137.70	BOISE
2016	MISC CONCRETE CONTRACTS-2016	6	30	\$	826.20	BOISE
2016	MISC CONCRETE CONTRACTS-2016	6	9	\$	247.86	BOISE
2016	MISC CONCRETE CONTRACTS-2016	6	38	\$	1,046.52	BOISE
2016	MISC CONCRETE CONTRACTS-2016	6	57	\$	1,569.78	BOISE
2016	MISC CONCRETE CONTRACTS-2016	6	0	\$	-	BOISE
2016	MISC CONCRETE CONTRACTS-2016	6	21	\$	578.34	BOISE
2016	MISC CONCRETE CONTRACTS-2016	6	37	\$	1,018.98	BOISE
2016	MISC CONCRETE CONTRACTS-2016	6	32	\$	881.28	BOISE
2016	MISC CONCRETE CONTRACTS-2016	6	24	\$	660.96	BOISE
2016	MISC CONCRETE CONTRACTS-2016	6	8	\$	220.32	BOISE
2016	MISC CONCRETE CONTRACTS-2016	6	8	\$	220.32	BOISE
2016	MISC CONCRETE CONTRACTS-2016	6	45	\$	1,239.30	BOISE
2016	MISC CONCRETE CONTRACTS-2016	6	24	\$	660.96	BOISE
2016	MISC CONCRETE CONTRACTS-2016	6	24	\$	660.96	BOISE
2016	MISC CONCRETE CONTRACTS-2016	6	24	\$	660.96	BOISE
2016	MISC CONCRETE CONTRACTS-2016	6	24	\$	660.96	BOISE
2016	MISC CONCRETE CONTRACTS-2016	6	24	\$	660.96	BOISE
2016	MISC CONCRETE CONTRACTS-2016	6	64	\$	1,762.56	BOISE
2016	MISC CONCRETE CONTRACTS-2016	6	64	\$	1,762.56	BOISE
2016	MISC CONCRETE CONTRACTS-2016	6	15	\$	413.10	BOISE
2016	MISC CONCRETE CONTRACTS-2016	6	14	\$	385.56	BOISE

2016	MISC CONCRETE CONTRACTS-2016	6	49	\$	1,349.46	BOISE
2016	MISC CONCRETE CONTRACTS-2016	6	120	\$	3,304.80	BOISE
2016	MISC CONCRETE CONTRACTS-2016	6	12	\$	330.48	BOISE
2016	MISC CONCRETE CONTRACTS-2016	6	30	\$	826.20	BOISE
2016	MISC CONCRETE CONTRACTS-2016	6	53	\$	1,459.62	BOISE
2016	MISC CONCRETE CONTRACTS-2016	6	20	\$	550.80	BOISE
2016	MISC CONCRETE CONTRACTS-2016	6	26	\$	716.04	BOISE
2016	MISC CONCRETE CONTRACTS-2016	6	75	\$	2,065.50	BOISE
2016	MISC CONCRETE CONTRACTS-2016	6	39	\$	1,074.06	BOISE
2016	MISC CONCRETE CONTRACTS-2016	8	53	\$	1,824.53	BOISE
2016	MISC CONCRETE CONTRACTS-2016	10	16	\$	734.40	BOISE
2016	MISC CONCRETE CONTRACTS-2016	0	0	\$	-	EAGLE
2016	MISC CONCRETE CONTRACTS-2016	0	0	\$	-	EAGLE
2016	MISC CONCRETE CONTRACTS-2016	0	0	\$	-	EAGLE
2016	MISC CONCRETE CONTRACTS-2016	4	14	\$	257.04	EAGLE
2016	MISC CONCRETE CONTRACTS-2016	4	9	\$	165.24	EAGLE
2016	MISC CONCRETE CONTRACTS-2016	4	15	\$	275.40	EAGLE
2016	MISC CONCRETE CONTRACTS-2016	4	10	\$	183.60	EAGLE
2016	MISC CONCRETE CONTRACTS-2016	4	19	\$	348.84	EAGLE
2016	MISC CONCRETE CONTRACTS-2016	4	18	\$	330.48	EAGLE
2016	MISC CONCRETE CONTRACTS-2016	4	11	\$	201.96	EAGLE
2016	MISC CONCRETE CONTRACTS-2016	4	10	\$	183.60	EAGLE
2016	MISC CONCRETE CONTRACTS-2016	4	18	\$	330.48	EAGLE
2016	MISC CONCRETE CONTRACTS-2016	4	19	\$	348.84	EAGLE
2016	MISC CONCRETE CONTRACTS-2016	4	9	\$	165.24	EAGLE
2016	MISC CONCRETE CONTRACTS-2016	4	11	\$	201.96	EAGLE
2016	MISC CONCRETE CONTRACTS-2016	4	11	\$	201.96	EAGLE
2016	MISC CONCRETE CONTRACTS-2016	4	14	\$	257.04	EAGLE
2016	MISC CONCRETE CONTRACTS-2016	4	8	\$	146.88	EAGLE
2016	MISC CONCRETE CONTRACTS-2016	4	15	\$	275.40	EAGLE
2016	MISC CONCRETE CONTRACTS-2016	4	10	\$	183.60	EAGLE
2016	MISC CONCRETE CONTRACTS-2016	4	13	\$	238.68	EAGLE
2016	MISC CONCRETE CONTRACTS-2016	4	13	\$	238.68	EAGLE
2016	MISC CONCRETE CONTRACTS-2016	4	24	\$	440.64	EAGLE
2016	MISC CONCRETE CONTRACTS-2016	4	16	\$	293.76	EAGLE
2016	MISC CONCRETE CONTRACTS-2016	4	16	\$	293.76	EAGLE
2016	MISC CONCRETE CONTRACTS-2016	4	10	\$	183.60	EAGLE
2016	MISC CONCRETE CONTRACTS-2016	4	11	\$	201.96	EAGLE
2016	MISC CONCRETE CONTRACTS-2016	5	11	\$	252.45	EAGLE
2016	MISC CONCRETE CONTRACTS-2016	5	10	\$	229.50	EAGLE
2016	MISC CONCRETE CONTRACTS-2016	5	11	\$	252.45	EAGLE
2016	MISC CONCRETE CONTRACTS-2016	5	6	\$	137.70	EAGLE
2016	MISC CONCRETE CONTRACTS-2016	5	12	\$	275.40	EAGLE
2016	MISC CONCRETE CONTRACTS-2016	5	12	\$	275.40	EAGLE
2016	MISC CONCRETE CONTRACTS-2016	5	10	\$	229.50	EAGLE
2016	MISC CONCRETE CONTRACTS-2016	5	10	\$	229.50	EAGLE
2016	MISC CONCRETE CONTRACTS-2016	5	32	\$	734.40	EAGLE
2016	MISC CONCRETE CONTRACTS-2016	5	30	\$	688.50	EAGLE
2016	MISC CONCRETE CONTRACTS-2016	5	24	\$	550.80	EAGLE
2016	MISC CONCRETE CONTRACTS-2016	5	44	\$	1,009.80	EAGLE

2016	MISC CONCRETE CONTRACTS-2016	5	29	\$	665.55	EAGLE
2016	MISC CONCRETE CONTRACTS-2016	5	10	\$	229.50	EAGLE
2016	MISC CONCRETE CONTRACTS-2016	5	10	\$	229.50	EAGLE
2016	MISC CONCRETE CONTRACTS-2016	5	15	\$	344.25	EAGLE
2016	MISC CONCRETE CONTRACTS-2016	5	10	\$	229.50	EAGLE
2016	MISC CONCRETE CONTRACTS-2016	6	8	\$	220.32	EAGLE
2016	MISC CONCRETE CONTRACTS-2016	21	5	\$	481.95	EAGLE
2016	MISC CONCRETE CONTRACTS-2016	5	12	\$	275.40	KUNA
2016	MISC CONCRETE CONTRACTS-2016	0	0	\$	-	MERIDIAN
2016	MISC CONCRETE CONTRACTS-2016	0	0	\$	-	MERIDIAN
2016	MISC CONCRETE CONTRACTS-2016	0	0	\$	-	MERIDIAN
2016	MISC CONCRETE CONTRACTS-2016	5	9	\$	206.55	MERIDIAN
2016	MISC CONCRETE CONTRACTS-2016	5	9	\$	206.55	MERIDIAN
2016	MISC CONCRETE CONTRACTS-2016	5	9	\$	206.55	MERIDIAN
2016	MISC CONCRETE CONTRACTS-2016	5	9	\$	206.55	MERIDIAN
2016	MISC CONCRETE CONTRACTS-2016	5	9	\$	206.55	MERIDIAN
2016	MISC CONCRETE CONTRACTS-2016	5	9	\$	206.55	MERIDIAN
2016	MISC CONCRETE CONTRACTS-2016	5	9	\$	206.55	MERIDIAN
2016	MISC CONCRETE CONTRACTS-2016	5	16	\$	367.20	MERIDIAN
2016	MISC CONCRETE CONTRACTS-2016	5	5	\$	114.75	MERIDIAN
2016	MISC CONCRETE CONTRACTS-2016	5	9	\$	206.55	MERIDIAN
2016	MISC CONCRETE CONTRACTS-2016	5	4	\$	91.80	MERIDIAN
2016	MISC CONCRETE CONTRACTS-2016	5	21	\$	481.95	MERIDIAN
2016	MISC CONCRETE CONTRACTS-2016	5	4	\$	91.80	MERIDIAN
2016	MISC CONCRETE CONTRACTS-2016	5	12	\$	275.40	MERIDIAN
2016	MISC CONCRETE CONTRACTS-2016	5	21	\$	481.95	MERIDIAN
2016	MISC CONCRETE CONTRACTS-2016	5	60	\$	1,377.00	MERIDIAN
2016	MISC CONCRETE CONTRACTS-2016	5	82	\$	1,881.90	MERIDIAN
2016	MISC CONCRETE CONTRACTS-2016	5	24	\$	550.80	MERIDIAN
2016	MISC CONCRETE CONTRACTS-2016	5	23	\$	527.85	MERIDIAN
2016	MISC CONCRETE CONTRACTS-2016	5	15	\$	344.25	MERIDIAN
2016	MISC CONCRETE CONTRACTS-2016	5	77	\$	1,767.15	MERIDIAN
2016	MISC CONCRETE CONTRACTS-2016	10	9	\$	413.10	MERIDIAN

Fiscal Year 2016 ACHD Sidewalk Projects

FY	Project Type	Width (ft)	Length (ft)	Estimated Cost	Jurisdiction
2016	PROJECT	5	207	\$ 4,751.04	ADA COUNTY
2016	PROJECT	5	514	\$ 11,787.59	ADA COUNTY
2016	PROJECT	5	488	\$ 11,189.47	ADA COUNTY
2016	PROJECT	5	268	\$ 6,156.15	ADA COUNTY
2016	PROJECT	5	896	\$ 20,561.21	ADA COUNTY
2016	PROJECT	5	623	\$ 14,306.51	ADA COUNTY
2016	PROJECT	5	305	\$ 6,991.10	ADA COUNTY
2016	PROJECT	5	767	\$ 17,595.04	ADA COUNTY
2016	PROJECT	5	30	\$ 681.53	ADA COUNTY
2016	PROJECT	5	573	\$ 13,146.25	ADA COUNTY
2016	PROJECT	5	16	\$ 377.15	ADA COUNTY
2016	PROJECT	10	292	\$ 13,397.56	BOISE
2016	PROJECT	10	749	\$ 34,372.54	BOISE
2016	PROJECT	5	412	\$ 9,456.35	BOISE
2016	PROJECT	5	137	\$ 3,141.72	BOISE
2016	PROJECT	5	182	\$ 4,185.34	BOISE
2016	PROJECT	5	66	\$ 1,509.51	BOISE
2016	PROJECT	5	289	\$ 6,625.48	BOISE
2016	PROJECT	5	314	\$ 7,195.29	BOISE
2016	PROJECT	5	111	\$ 2,541.89	BOISE
2016	PROJECT	5	391	\$ 8,968.03	BOISE
2016	PROJECT	5	19	\$ 436.93	BOISE
2016	PROJECT	5	45	\$ 1,039.53	BOISE
2016	PROJECT	5	145	\$ 3,338.87	BOISE
2016	PROJECT	5	206	\$ 4,727.15	BOISE
2016	PROJECT	5	17	\$ 396.33	BOISE
2016	PROJECT	5	36	\$ 832.52	BOISE
2016	PROJECT	5	75	\$ 1,731.56	BOISE
2016	PROJECT	5	23	\$ 516.95	BOISE
2016	PROJECT	5	447	\$ 10,261.17	BOISE
2016	PROJECT	5	305	\$ 6,993.99	BOISE
2016	PROJECT	5	30	\$ 682.65	BOISE
2016	PROJECT	5	220	\$ 5,050.87	BOISE
2016	PROJECT	5	173	\$ 3,972.30	BOISE
2016	PROJECT	5	61	\$ 1,390.17	BOISE
2016	PROJECT	5	102	\$ 2,335.10	BOISE
2016	PROJECT	5	238	\$ 5,461.73	BOISE
2016	PROJECT	5	265	\$ 6,071.12	BOISE
2016	PROJECT	5	130	\$ 2,972.46	BOISE
2016	PROJECT	5	238	\$ 5,472.31	BOISE
2016	PROJECT	5	84	\$ 1,929.03	EAGLE
2016	PROJECT	5	96	\$ 2,196.61	KUNA
2016	PROJECT	5	152	\$ 3,486.73	KUNA
2016	PROJECT	5	214	\$ 4,906.10	KUNA
2016	PROJECT	5	264	\$ 6,051.67	KUNA
2016	PROJECT	5	114	\$ 2,613.79	KUNA
2016	PROJECT	5	92	\$ 2,119.28	KUNA

2016	PROJECT	5	408	\$ 9,359.88	KUNA
2016	PROJECT	5	229	\$ 5,258.76	KUNA
2016	PROJECT	5	22	\$ 514.58	KUNA
2016	PROJECT	5	30	\$ 688.62	KUNA
2016	PROJECT	5	43	\$ 976.76	KUNA
2016	PROJECT	5	20	\$ 454.02	KUNA
2016	PROJECT	5	48	\$ 1,097.17	KUNA
2016	PROJECT	5	20	\$ 450.28	KUNA
2016	PROJECT	5	38	\$ 863.77	KUNA
2016	PROJECT	5	50	\$ 1,139.64	KUNA
2016	PROJECT	5	106	\$ 2,437.47	KUNA
2016	PROJECT	5	64	\$ 1,469.79	KUNA
2016	PROJECT	5	246	\$ 5,653.31	KUNA
2016	PROJECT	5	85	\$ 1,957.89	KUNA
2016	PROJECT	5	78	\$ 1,792.36	KUNA
2016	PROJECT	5	57	\$ 1,316.46	KUNA
2016	PROJECT	5	97	\$ 2,221.29	KUNA
2016	PROJECT	5	327	\$ 7,506.36	KUNA
2016	PROJECT	5	199	\$ 4,563.06	KUNA
2016	PROJECT	5	129	\$ 2,965.02	KUNA
2016	PROJECT	5	152	\$ 3,499.16	KUNA
2016	PROJECT	5	151	\$ 3,472.05	KUNA
2016	PROJECT	5	30	\$ 677.95	KUNA
2016	PROJECT	5	305	\$ 6,991.10	MERIDIAN
2016	PROJECT	5	35	\$ 801.32	MERIDIAN
2016	PROJECT	5	54	\$ 1,233.82	MERIDIAN
2016	PROJECT	5	285	\$ 6,535.95	MERIDIAN
2016	PROJECT	5	273	\$ 6,255.65	MERIDIAN
2016	PROJECT	5	651	\$ 14,940.21	MERIDIAN
2016	PROJECT	5	303	\$ 6,953.85	MERIDIAN
2016	PROJECT	5	296	\$ 6,782.94	MERIDIAN
2016	PROJECT	5	74	\$ 1,709.44	MERIDIAN
2016	PROJECT	5	286	\$ 6,557.33	MERIDIAN
2016	PROJECT	5	160	\$ 3,662.67	MERIDIAN
2016	PROJECT	5	446	\$ 10,244.04	MERIDIAN
2016	PROJECT	5	320	\$ 7,335.36	MERIDIAN
2016	PROJECT	5	167	\$ 3,830.30	MERIDIAN
2016	PROJECT	5	45	\$ 1,026.91	MERIDIAN
2016	PROJECT	5	48	\$ 1,112.30	MERIDIAN
2016	PROJECT	5	410	\$ 9,411.17	MERIDIAN
2016	PROJECT	5	28	\$ 633.33	MERIDIAN
2016	PROJECT	5	172	\$ 3,947.67	MERIDIAN

Fiscal Year 2016 Subdivision – Sidewalk

FY	Project Type	Width (ft)	Length (ft)	Estimated Cost	Jurisdiction
2016	SUBDIVISION	10	203	\$ 9,333.82	ADA COUNTY
2016	SUBDIVISION	5	521	\$ 11,959.05	ADA COUNTY
2016	SUBDIVISION	5	293	\$ 6,729.34	ADA COUNTY
2016	SUBDIVISION	5	80	\$ 1,831.87	ADA COUNTY
2016	SUBDIVISION	5	273	\$ 6,260.67	ADA COUNTY
2016	SUBDIVISION	5	39	\$ 899.74	ADA COUNTY
2016	SUBDIVISION	5	408	\$ 9,360.35	ADA COUNTY
2016	SUBDIVISION	5	475	\$ 10,903.96	ADA COUNTY
2016	SUBDIVISION	5	150	\$ 3,431.54	ADA COUNTY
2016	SUBDIVISION	5	163	\$ 3,729.56	ADA COUNTY
2016	SUBDIVISION	5	1,728	\$ 39,668.13	ADA COUNTY
2016	SUBDIVISION	5	550	\$ 12,614.14	ADA COUNTY
2016	SUBDIVISION	5	433	\$ 9,940.27	ADA COUNTY
2016	SUBDIVISION	5	516	\$ 11,831.80	ADA COUNTY
2016	SUBDIVISION	5	415	\$ 9,530.07	ADA COUNTY
2016	SUBDIVISION	5	308	\$ 7,073.82	ADA COUNTY
2016	SUBDIVISION	5	196	\$ 4,504.93	ADA COUNTY
2016	SUBDIVISION	5	291	\$ 6,672.89	ADA COUNTY
2016	SUBDIVISION	5	217	\$ 4,990.22	ADA COUNTY
2016	SUBDIVISION	5	2,087	\$ 47,899.21	ADA COUNTY
2016	SUBDIVISION	5	648	\$ 14,874.44	ADA COUNTY
2016	SUBDIVISION	5	931	\$ 21,372.66	ADA COUNTY
2016	SUBDIVISION	5	130	\$ 2,984.83	ADA COUNTY
2016	SUBDIVISION	5	1,337	\$ 30,684.84	ADA COUNTY
2016	SUBDIVISION	5	1,300	\$ 29,831.63	ADA COUNTY
2016	SUBDIVISION	5	648	\$ 14,864.66	ADA COUNTY
2016	SUBDIVISION	5	124	\$ 2,846.14	ADA COUNTY
2016	SUBDIVISION	5	695	\$ 15,950.06	ADA COUNTY
2016	SUBDIVISION	5	194	\$ 4,447.10	ADA COUNTY
2016	SUBDIVISION	5	615	\$ 14,121.71	ADA COUNTY
2016	SUBDIVISION	5	1,740	\$ 39,926.23	ADA COUNTY
2016	SUBDIVISION	5	138	\$ 3,172.91	ADA COUNTY
2016	SUBDIVISION	5	470	\$ 10,780.12	ADA COUNTY
2016	SUBDIVISION	5	415	\$ 9,530.07	ADA COUNTY
2016	SUBDIVISION	5	308	\$ 7,073.82	ADA COUNTY
2016	SUBDIVISION	10	203	\$ 9,333.82	BOISE
2016	SUBDIVISION	5	1,748	\$ 40,109.93	BOISE
2016	SUBDIVISION	5	55	\$ 1,258.78	BOISE
2016	SUBDIVISION	5	147	\$ 3,380.13	BOISE
2016	SUBDIVISION	5	924	\$ 21,206.66	BOISE
2016	SUBDIVISION	5	218	\$ 5,007.84	BOISE
2016	SUBDIVISION	5	464	\$ 10,642.50	BOISE
2016	SUBDIVISION	5	142	\$ 3,248.44	BOISE
2016	SUBDIVISION	5	671	\$ 15,398.48	BOISE
2016	SUBDIVISION	5	521	\$ 11,959.05	BOISE
2016	SUBDIVISION	5	413	\$ 9,468.35	BOISE
2016	SUBDIVISION	5	151	\$ 3,474.84	BOISE

2016	SUBDIVISION	5	468	\$	10,737.26	BOISE
2016	SUBDIVISION	5	470	\$	10,790.28	BOISE
2016	SUBDIVISION	5	764	\$	17,532.75	BOISE
2016	SUBDIVISION	5	447	\$	10,250.78	BOISE
2016	SUBDIVISION	5	717	\$	16,446.44	BOISE
2016	SUBDIVISION	5	208	\$	4,778.66	BOISE
2016	SUBDIVISION	5	1,101	\$	25,271.90	BOISE
2016	SUBDIVISION	5	293	\$	6,729.34	BOISE
2016	SUBDIVISION	5	81	\$	1,866.41	BOISE
2016	SUBDIVISION	5	208	\$	4,763.81	BOISE
2016	SUBDIVISION	5	260	\$	5,967.65	BOISE
2016	SUBDIVISION	5	258	\$	5,911.32	BOISE
2016	SUBDIVISION	5	123	\$	2,812.38	BOISE
2016	SUBDIVISION	5	547	\$	12,557.57	BOISE
2016	SUBDIVISION	5	196	\$	4,506.20	BOISE
2016	SUBDIVISION	5	122	\$	2,797.62	BOISE
2016	SUBDIVISION	5	119	\$	2,737.91	BOISE
2016	SUBDIVISION	5	949	\$	21,785.34	BOISE
2016	SUBDIVISION	5	730	\$	16,743.08	BOISE
2016	SUBDIVISION	5	523	\$	11,995.55	BOISE
2016	SUBDIVISION	5	557	\$	12,792.75	BOISE
2016	SUBDIVISION	5	628	\$	14,422.41	BOISE
2016	SUBDIVISION	5	618	\$	14,180.10	BOISE
2016	SUBDIVISION	5	866	\$	19,867.88	BOISE
2016	SUBDIVISION	5	855	\$	19,629.19	BOISE
2016	SUBDIVISION	5	1,478	\$	33,920.11	BOISE
2016	SUBDIVISION	5	634	\$	14,557.15	BOISE
2016	SUBDIVISION	5	855	\$	19,622.12	BOISE
2016	SUBDIVISION	5	782	\$	17,952.60	BOISE
2016	SUBDIVISION	5	1,130	\$	25,939.08	BOISE
2016	SUBDIVISION	5	1,030	\$	23,638.88	BOISE
2016	SUBDIVISION	5	423	\$	9,706.05	BOISE
2016	SUBDIVISION	5	389	\$	8,928.20	BOISE
2016	SUBDIVISION	5	906	\$	20,786.66	BOISE
2016	SUBDIVISION	5	101	\$	2,325.78	BOISE
2016	SUBDIVISION	5	363	\$	8,335.31	BOISE
2016	SUBDIVISION	5	176	\$	4,035.18	BOISE
2016	SUBDIVISION	5	279	\$	6,394.82	BOISE
2016	SUBDIVISION	5	458	\$	10,519.27	BOISE
2016	SUBDIVISION	5	161	\$	3,701.92	BOISE
2016	SUBDIVISION	5	396	\$	9,077.59	BOISE
2016	SUBDIVISION	5	62	\$	1,432.64	BOISE
2016	SUBDIVISION	5	1,228	\$	28,174.14	BOISE
2016	SUBDIVISION	5	221	\$	5,077.80	BOISE
2016	SUBDIVISION	5	89	\$	2,046.70	BOISE
2016	SUBDIVISION	5	414	\$	9,512.12	BOISE
2016	SUBDIVISION	5	916	\$	21,033.11	BOISE
2016	SUBDIVISION	5	245	\$	5,632.33	BOISE
2016	SUBDIVISION	5	80	\$	1,833.38	BOISE
2016	SUBDIVISION	5	588	\$	13,492.57	BOISE

2016	SUBDIVISION	5	389	\$	8,930.32	BOISE
2016	SUBDIVISION	5	497	\$	11,411.33	BOISE
2016	SUBDIVISION	5	135	\$	3,100.19	BOISE
2016	SUBDIVISION	5	37	\$	851.67	BOISE
2016	SUBDIVISION	5	168	\$	3,862.47	BOISE
2016	SUBDIVISION	5	19	\$	446.45	BOISE
2016	SUBDIVISION	5	127	\$	2,911.68	BOISE
2016	SUBDIVISION	5	265	\$	6,086.89	BOISE
2016	SUBDIVISION	5	231	\$	5,299.35	BOISE
2016	SUBDIVISION	5	413	\$	9,472.86	BOISE
2016	SUBDIVISION	5	400	\$	9,179.89	BOISE
2016	SUBDIVISION	5	356	\$	8,162.77	BOISE
2016	SUBDIVISION	5	347	\$	7,955.74	BOISE
2016	SUBDIVISION	5	415	\$	9,516.94	BOISE
2016	SUBDIVISION	5	403	\$	9,259.91	BOISE
2016	SUBDIVISION	5	797	\$	18,283.60	EAGLE
2016	SUBDIVISION	5	219	\$	5,029.18	EAGLE
2016	SUBDIVISION	5	273	\$	6,260.67	EAGLE
2016	SUBDIVISION	5	87	\$	1,988.91	EAGLE
2016	SUBDIVISION	5	250	\$	5,734.68	EAGLE
2016	SUBDIVISION	5	211	\$	4,852.04	EAGLE
2016	SUBDIVISION	5	213	\$	4,879.14	EAGLE
2016	SUBDIVISION	5	392	\$	9,004.65	EAGLE
2016	SUBDIVISION	5	227	\$	5,201.34	EAGLE
2016	SUBDIVISION	5	86	\$	1,984.74	EAGLE
2016	SUBDIVISION	5	488	\$	11,200.52	EAGLE
2016	SUBDIVISION	5	578	\$	13,256.08	EAGLE
2016	SUBDIVISION	5	612	\$	14,054.44	EAGLE
2016	SUBDIVISION	5	166	\$	3,802.56	EAGLE
2016	SUBDIVISION	5	453	\$	10,401.91	EAGLE
2016	SUBDIVISION	5	399	\$	9,157.86	EAGLE
2016	SUBDIVISION	5	927	\$	21,265.29	EAGLE
2016	SUBDIVISION	5	297	\$	6,809.65	EAGLE
2016	SUBDIVISION	5	495	\$	11,369.32	EAGLE
2016	SUBDIVISION	5	1,067	\$	24,497.97	EAGLE
2016	SUBDIVISION	5	356	\$	8,172.11	EAGLE
2016	SUBDIVISION	5	186	\$	4,271.17	EAGLE
2016	SUBDIVISION	5	146	\$	3,353.30	EAGLE
2016	SUBDIVISION	5	200	\$	4,588.56	EAGLE
2016	SUBDIVISION	5	230	\$	5,284.25	EAGLE
2016	SUBDIVISION	5	1,235	\$	28,335.87	EAGLE
2016	SUBDIVISION	5	2,808	\$	64,450.40	EAGLE
2016	SUBDIVISION	5	1,980	\$	45,439.13	EAGLE
2016	SUBDIVISION	5	3,019	\$	69,294.79	EAGLE
2016	SUBDIVISION	5	3,238	\$	74,318.80	EAGLE
2016	SUBDIVISION	5	7,131	\$	163,655.53	EAGLE
2016	SUBDIVISION	5	1,649	\$	37,854.89	EAGLE
2016	SUBDIVISION	5	1,759	\$	40,365.79	EAGLE
2016	SUBDIVISION	5	2,884	\$	66,184.70	EAGLE
2016	SUBDIVISION	5	2,703	\$	62,029.66	EAGLE

2016	SUBDIVISION	5	829	\$ 19,018.96	EAGLE
2016	SUBDIVISION	5	5,056	\$ 116,025.75	EAGLE
2016	SUBDIVISION	5	3,878	\$ 89,009.58	EAGLE
2016	SUBDIVISION	5	1,620	\$ 37,181.30	EAGLE
2016	SUBDIVISION	5	1,185	\$ 27,199.47	EAGLE
2016	SUBDIVISION	5	1,622	\$ 37,229.85	EAGLE
2016	SUBDIVISION	5	112	\$ 2,561.84	EAGLE
2016	SUBDIVISION	5	5,087	\$ 116,744.32	EAGLE
2016	SUBDIVISION	5	7,899	\$ 181,272.60	EAGLE
2016	SUBDIVISION	5	243	\$ 5,565.97	EAGLE
2016	SUBDIVISION	5	2,170	\$ 49,799.09	EAGLE
2016	SUBDIVISION	5	1,939	\$ 44,506.76	EAGLE
2016	SUBDIVISION	5	2,015	\$ 46,244.62	EAGLE
2016	SUBDIVISION	5	1,839	\$ 42,216.40	EAGLE
2016	SUBDIVISION	5	1,621	\$ 37,195.88	EAGLE
2016	SUBDIVISION	5	691	\$ 15,854.07	EAGLE
2016	SUBDIVISION	5	2,602	\$ 59,708.22	EAGLE
2016	SUBDIVISION	5	2,913	\$ 66,852.37	EAGLE
2016	SUBDIVISION	5	851	\$ 19,541.85	EAGLE
2016	SUBDIVISION	5	4,691	\$ 107,662.15	EAGLE
2016	SUBDIVISION	5	2,686	\$ 61,650.78	EAGLE
2016	SUBDIVISION	5	2,859	\$ 65,606.99	EAGLE
2016	SUBDIVISION	5	2,974	\$ 68,242.60	EAGLE
2016	SUBDIVISION	5	1,221	\$ 28,025.73	EAGLE
2016	SUBDIVISION	5	6,768	\$ 155,323.53	EAGLE
2016	SUBDIVISION	5	1,329	\$ 30,500.69	EAGLE
2016	SUBDIVISION	5	3,591	\$ 82,421.23	EAGLE
2016	SUBDIVISION	5	1,498	\$ 34,374.31	EAGLE
2016	SUBDIVISION	5	288	\$ 6,604.04	EAGLE
2016	SUBDIVISION	5	390	\$ 8,951.08	EAGLE
2016	SUBDIVISION	5	2,224	\$ 51,049.14	EAGLE
2016	SUBDIVISION	5	2,319	\$ 53,211.55	EAGLE
2016	SUBDIVISION	5	698	\$ 16,014.03	EAGLE
2016	SUBDIVISION	5	162	\$ 3,706.81	EAGLE
2016	SUBDIVISION	5	128	\$ 2,928.79	EAGLE
2016	SUBDIVISION	5	3,019	\$ 69,294.79	EAGLE
2016	SUBDIVISION	5	1,185	\$ 27,199.47	EAGLE
2016	SUBDIVISION	5	3,591	\$ 82,421.23	EAGLE
2016	SUBDIVISION	5	1,498	\$ 34,374.31	EAGLE
2016	SUBDIVISION	5	245	\$ 5,632.33	GARDEN CITY
2016	SUBDIVISION	5	1,304	\$ 29,924.46	KUNA
2016	SUBDIVISION	5	770	\$ 17,674.84	KUNA
2016	SUBDIVISION	5	177	\$ 4,071.22	KUNA
2016	SUBDIVISION	5	1,169	\$ 26,831.81	KUNA
2016	SUBDIVISION	5	180	\$ 4,142.06	KUNA
2016	SUBDIVISION	5	966	\$ 22,175.02	KUNA
2016	SUBDIVISION	5	484	\$ 11,118.89	KUNA
2016	SUBDIVISION	5	770	\$ 17,681.36	KUNA
2016	SUBDIVISION	5	148	\$ 3,392.25	KUNA
2016	SUBDIVISION	5	353	\$ 8,112.46	KUNA

2016	SUBDIVISION	5	241	\$	5,521.17	KUNA
2016	SUBDIVISION	5	366	\$	8,397.34	KUNA
2016	SUBDIVISION	5	155	\$	3,565.14	KUNA
2016	SUBDIVISION	5	141	\$	3,244.91	KUNA
2016	SUBDIVISION	5	665	\$	15,260.22	KUNA
2016	SUBDIVISION	5	135	\$	3,102.68	KUNA
2016	SUBDIVISION	5	1,215	\$	27,884.12	KUNA
2016	SUBDIVISION	5	212	\$	4,856.14	KUNA
2016	SUBDIVISION	5	742	\$	17,023.83	KUNA
2016	SUBDIVISION	5	363	\$	8,323.48	KUNA
2016	SUBDIVISION	5	768	\$	17,633.87	KUNA
2016	SUBDIVISION	5	1,121	\$	25,719.95	KUNA
2016	SUBDIVISION	5	1,642	\$	37,689.03	KUNA
2016	SUBDIVISION	5	598	\$	13,720.61	KUNA
2016	SUBDIVISION	5	353	\$	8,097.84	MERIDIAN
2016	SUBDIVISION	5	908	\$	20,829.35	MERIDIAN
2016	SUBDIVISION	5	1,164	\$	26,712.49	MERIDIAN
2016	SUBDIVISION	5	265	\$	6,075.89	MERIDIAN
2016	SUBDIVISION	5	260	\$	5,965.26	MERIDIAN
2016	SUBDIVISION	5	261	\$	5,984.32	MERIDIAN
2016	SUBDIVISION	5	264	\$	6,059.72	MERIDIAN
2016	SUBDIVISION	5	211	\$	4,852.69	MERIDIAN
2016	SUBDIVISION	5	472	\$	10,833.98	MERIDIAN
2016	SUBDIVISION	5	81	\$	1,867.84	MERIDIAN
2016	SUBDIVISION	5	101	\$	2,311.14	MERIDIAN
2016	SUBDIVISION	5	210	\$	4,820.07	MERIDIAN
2016	SUBDIVISION	5	215	\$	4,927.10	MERIDIAN
2016	SUBDIVISION	5	219	\$	5,020.22	MERIDIAN
2016	SUBDIVISION	5	917	\$	21,055.96	MERIDIAN
2016	SUBDIVISION	5	858	\$	19,693.49	MERIDIAN
2016	SUBDIVISION	5	317	\$	7,280.05	MERIDIAN
2016	SUBDIVISION	5	238	\$	5,460.09	MERIDIAN
2016	SUBDIVISION	5	46	\$	1,059.89	MERIDIAN
2016	SUBDIVISION	5	657	\$	15,079.95	MERIDIAN
2016	SUBDIVISION	5	628	\$	14,411.84	MERIDIAN
2016	SUBDIVISION	5	572	\$	13,128.80	MERIDIAN
2016	SUBDIVISION	5	81	\$	1,855.62	MERIDIAN
2016	SUBDIVISION	5	127	\$	2,918.49	MERIDIAN
2016	SUBDIVISION	5	141	\$	3,228.82	MERIDIAN
2016	SUBDIVISION	5	80	\$	1,833.25	MERIDIAN
2016	SUBDIVISION	5	62	\$	1,417.84	MERIDIAN
2016	SUBDIVISION	5	130	\$	2,976.24	MERIDIAN
2016	SUBDIVISION	5	127	\$	2,913.98	MERIDIAN
2016	SUBDIVISION	5	139	\$	3,200.13	MERIDIAN
2016	SUBDIVISION	5	123	\$	2,816.91	MERIDIAN
2016	SUBDIVISION	5	58	\$	1,327.91	MERIDIAN
2016	SUBDIVISION	5	502	\$	11,522.43	MERIDIAN
2016	SUBDIVISION	5	127	\$	2,925.78	MERIDIAN
2016	SUBDIVISION	5	131	\$	2,995.49	MERIDIAN
2016	SUBDIVISION	5	989	\$	22,701.08	MERIDIAN

2016	SUBDIVISION	5	981	\$	22,520.80	MERIDIAN
2016	SUBDIVISION	5	728	\$	16,698.40	MERIDIAN
2016	SUBDIVISION	5	740	\$	16,994.23	MERIDIAN
2016	SUBDIVISION	5	89	\$	2,051.85	MERIDIAN
2016	SUBDIVISION	5	118	\$	2,701.54	MERIDIAN
2016	SUBDIVISION	5	647	\$	14,839.71	MERIDIAN
2016	SUBDIVISION	5	58	\$	1,337.35	MERIDIAN
2016	SUBDIVISION	5	650	\$	14,920.55	MERIDIAN
2016	SUBDIVISION	5	26	\$	597.41	MERIDIAN
2016	SUBDIVISION	5	34	\$	778.79	MERIDIAN
2016	SUBDIVISION	5	37	\$	844.67	MERIDIAN
2016	SUBDIVISION	5	51	\$	1,179.98	MERIDIAN
2016	SUBDIVISION	5	355	\$	8,151.92	MERIDIAN
2016	SUBDIVISION	5	389	\$	8,921.17	MERIDIAN
2016	SUBDIVISION	5	1,810	\$	41,540.63	MERIDIAN
2016	SUBDIVISION	5	646	\$	14,825.19	MERIDIAN
2016	SUBDIVISION	5	949	\$	21,790.71	MERIDIAN
2016	SUBDIVISION	5	1,323	\$	30,371.89	MERIDIAN
2016	SUBDIVISION	5	679	\$	15,582.48	MERIDIAN
2016	SUBDIVISION	5	459	\$	10,534.28	MERIDIAN
2016	SUBDIVISION	5	149	\$	3,416.60	MERIDIAN
2016	SUBDIVISION	5	506	\$	11,605.70	MERIDIAN
2016	SUBDIVISION	5	123	\$	2,823.74	MERIDIAN
2016	SUBDIVISION	5	261	\$	5,993.07	MERIDIAN
2016	SUBDIVISION	5	721	\$	16,538.82	MERIDIAN
2016	SUBDIVISION	5	450	\$	10,330.89	MERIDIAN
2016	SUBDIVISION	5	655	\$	15,021.46	MERIDIAN
2016	SUBDIVISION	5	195	\$	4,465.86	MERIDIAN
2016	SUBDIVISION	5	523	\$	11,995.55	MERIDIAN
2016	SUBDIVISION	5	557	\$	12,792.75	MERIDIAN
2016	SUBDIVISION	5	1,261	\$	28,934.85	MERIDIAN
2016	SUBDIVISION	5	1,999	\$	45,879.08	MERIDIAN
2016	SUBDIVISION	5	1,054	\$	24,184.12	MERIDIAN
2016	SUBDIVISION	5	157	\$	3,593.00	MERIDIAN
2016	SUBDIVISION	5	1,090	\$	25,021.04	MERIDIAN
2016	SUBDIVISION	5	3,188	\$	73,165.36	MERIDIAN
2016	SUBDIVISION	5	429	\$	9,844.22	MERIDIAN
2016	SUBDIVISION	5	14	\$	318.25	MERIDIAN
2016	SUBDIVISION	5	1,137	\$	26,093.01	MERIDIAN
2016	SUBDIVISION	5	1,791	\$	41,113.41	MERIDIAN
2016	SUBDIVISION	5	619	\$	14,195.59	MERIDIAN
2016	SUBDIVISION	5	1,243	\$	28,531.95	MERIDIAN
2016	SUBDIVISION	5	1,076	\$	24,694.06	MERIDIAN
2016	SUBDIVISION	5	617	\$	14,161.36	MERIDIAN
2016	SUBDIVISION	5	2,197	\$	50,414.79	MERIDIAN
2016	SUBDIVISION	5	293	\$	6,729.59	MERIDIAN
2016	SUBDIVISION	5	474	\$	10,872.65	MERIDIAN
2016	SUBDIVISION	5	279	\$	6,400.01	MERIDIAN
2016	SUBDIVISION	5	274	\$	6,294.65	MERIDIAN
2016	SUBDIVISION	5	274	\$	6,283.28	MERIDIAN

2016	SUBDIVISION	5	286	\$ 6,556.49	MERIDIAN
2016	SUBDIVISION	5	251	\$ 5,754.93	MERIDIAN
2016	SUBDIVISION	5	263	\$ 6,046.04	MERIDIAN
2016	SUBDIVISION	5	493	\$ 11,302.96	MERIDIAN
2016	SUBDIVISION	5	2,660	\$ 61,053.19	MERIDIAN
2016	SUBDIVISION	5	1,485	\$ 34,087.19	MERIDIAN
2016	SUBDIVISION	5	1,408	\$ 32,303.52	MERIDIAN
2016	SUBDIVISION	5	2,299	\$ 52,761.49	MERIDIAN
2016	SUBDIVISION	5	1,506	\$ 34,563.76	MERIDIAN
2016	SUBDIVISION	5	1,390	\$ 31,902.60	MERIDIAN
2016	SUBDIVISION	5	947	\$ 21,733.77	MERIDIAN
2016	SUBDIVISION	5	157	\$ 3,602.95	MERIDIAN
2016	SUBDIVISION	5	593	\$ 13,619.71	MERIDIAN
2016	SUBDIVISION	5	1,764	\$ 40,494.78	MERIDIAN
2016	SUBDIVISION	5	1,286	\$ 29,515.21	MERIDIAN
2016	SUBDIVISION	5	810	\$ 18,578.60	MERIDIAN
2016	SUBDIVISION	5	782	\$ 17,940.41	MERIDIAN
2016	SUBDIVISION	5	1,543	\$ 35,406.08	MERIDIAN
2016	SUBDIVISION	5	1,095	\$ 25,135.94	MERIDIAN
2016	SUBDIVISION	5	885	\$ 20,312.82	MERIDIAN
2016	SUBDIVISION	5	1,559	\$ 35,778.37	MERIDIAN
2016	SUBDIVISION	5	1,299	\$ 29,812.27	MERIDIAN
2016	SUBDIVISION	5	463	\$ 10,620.99	MERIDIAN
2016	SUBDIVISION	5	502	\$ 11,531.03	MERIDIAN
2016	SUBDIVISION	5	109	\$ 2,508.12	MERIDIAN
2016	SUBDIVISION	5	543	\$ 12,464.58	MERIDIAN
2016	SUBDIVISION	5	438	\$ 10,061.39	MERIDIAN
2016	SUBDIVISION	5	1,337	\$ 30,684.84	MERIDIAN
2016	SUBDIVISION	5	946	\$ 21,715.63	MERIDIAN
2016	SUBDIVISION	5	1,865	\$ 42,810.89	MERIDIAN
2016	SUBDIVISION	5	3,409	\$ 78,240.23	MERIDIAN
2016	SUBDIVISION	5	2,077	\$ 47,674.24	MERIDIAN
2016	SUBDIVISION	5	1,775	\$ 40,731.76	MERIDIAN
2016	SUBDIVISION	5	435	\$ 9,987.94	MERIDIAN
2016	SUBDIVISION	5	1,473	\$ 33,803.79	MERIDIAN
2016	SUBDIVISION	5	1,471	\$ 33,770.65	MERIDIAN
2016	SUBDIVISION	5	1,086	\$ 24,934.52	MERIDIAN
2016	SUBDIVISION	5	346	\$ 7,945.25	MERIDIAN
2016	SUBDIVISION	5	1,566	\$ 35,929.27	MERIDIAN
2016	SUBDIVISION	5	1,526	\$ 35,012.23	MERIDIAN
2016	SUBDIVISION	5	188	\$ 4,303.20	MERIDIAN
2016	SUBDIVISION	5	698	\$ 16,013.33	MERIDIAN
2016	SUBDIVISION	5	1,338	\$ 30,702.98	MERIDIAN
2016	SUBDIVISION	5	1,243	\$ 28,516.53	MERIDIAN
2016	SUBDIVISION	5	974	\$ 22,357.09	MERIDIAN
2016	SUBDIVISION	5	1,385	\$ 31,788.72	MERIDIAN
2016	SUBDIVISION	5	670	\$ 15,372.18	MERIDIAN
2016	SUBDIVISION	5	1,548	\$ 35,520.98	MERIDIAN
2016	SUBDIVISION	5	1,106	\$ 25,391.44	MERIDIAN
2016	SUBDIVISION	5	1,114	\$ 25,565.20	MERIDIAN

2016	SUBDIVISION	5	2,244	\$ 51,511.04	MERIDIAN
2016	SUBDIVISION	5	1,440	\$ 33,043.79	MERIDIAN
2016	SUBDIVISION	5	4,238	\$ 97,264.64	MERIDIAN
2016	SUBDIVISION	5	661	\$ 15,172.41	MERIDIAN
2016	SUBDIVISION	5	2,439	\$ 55,983.71	MERIDIAN
2016	SUBDIVISION	5	1,999	\$ 45,879.70	MERIDIAN
2016	SUBDIVISION	5	426	\$ 9,778.79	MERIDIAN
2016	SUBDIVISION	5	244	\$ 5,590.97	MERIDIAN
2016	SUBDIVISION	5	888	\$ 20,371.92	MERIDIAN
2016	SUBDIVISION	5	498	\$ 11,436.82	MERIDIAN
2016	SUBDIVISION	5	1,961	\$ 45,009.57	MERIDIAN
2016	SUBDIVISION	5	437	\$ 10,020.22	MERIDIAN
2016	SUBDIVISION	5	1,881	\$ 43,176.68	MERIDIAN
2016	SUBDIVISION	5	1,165	\$ 26,745.93	MERIDIAN
2016	SUBDIVISION	5	2,268	\$ 52,040.57	MERIDIAN
2016	SUBDIVISION	5	950	\$ 21,804.45	MERIDIAN
2016	SUBDIVISION	5	1,051	\$ 24,119.16	MERIDIAN
2016	SUBDIVISION	5	1,195	\$ 27,436.38	MERIDIAN
2016	SUBDIVISION	5	211	\$ 4,845.53	MERIDIAN
2016	SUBDIVISION	5	1,139	\$ 26,130.01	MERIDIAN
2016	SUBDIVISION	5	911	\$ 20,901.57	MERIDIAN
2016	SUBDIVISION	5	627	\$ 14,388.76	MERIDIAN
2016	SUBDIVISION	5	478	\$ 10,973.45	MERIDIAN
2016	SUBDIVISION	5	602	\$ 13,815.39	MERIDIAN
2016	SUBDIVISION	5	1,186	\$ 27,219.67	MERIDIAN
2016	SUBDIVISION	5	645	\$ 14,798.33	MERIDIAN
2016	SUBDIVISION	5	943	\$ 21,637.24	MERIDIAN
2016	SUBDIVISION	5	326	\$ 7,487.88	STAR
2016	SUBDIVISION	5	111	\$ 2,546.41	STAR
2016	SUBDIVISION	5	111	\$ 2,554.95	STAR
2016	SUBDIVISION	5	211	\$ 4,850.48	STAR
2016	SUBDIVISION	5	338	\$ 7,747.01	STAR
2016	SUBDIVISION	5	74	\$ 1,693.05	STAR
2016	SUBDIVISION	5	78	\$ 1,787.11	STAR
2016	SUBDIVISION	5	76	\$ 1,744.31	STAR
2016	SUBDIVISION	5	100	\$ 2,290.57	STAR
2016	SUBDIVISION	5	211	\$ 4,841.52	STAR
2016	SUBDIVISION	5	85	\$ 1,944.53	STAR
2016	SUBDIVISION	5	73	\$ 1,664.57	STAR
2016	SUBDIVISION	5	1,121	\$ 25,734.63	STAR
2016	SUBDIVISION	5	693	\$ 15,898.16	STAR
2016	SUBDIVISION	5	689	\$ 15,809.90	STAR

Appendix B- Pedestrian Ramps

Fiscal Year 2016 ACHD Pedestrian Ramp Projects

FY	Project Type	Ramps Installed	Cost	Jurisdiction
2016	ACHD PROJECT	1	\$ 1,211	ADA COUNTY
2016	ACHD PROJECT	1	\$ 1,211	ADA COUNTY
2016	ACHD PROJECT	1	\$ 1,211	ADA COUNTY
2016	ACHD PROJECT	1	\$ 1,211	ADA COUNTY
2016	ACHD PROJECT	1	\$ 1,211	ADA COUNTY
2016	ACHD PROJECT	1	\$ 1,211	ADA COUNTY
2016	ACHD PROJECT	1	\$ 1,211	ADA COUNTY
2016	ACHD PROJECT	1	\$ 1,211	ADA COUNTY
2016	ACHD PROJECT	1	\$ 1,211	ADA COUNTY
2016	ACHD PROJECT	1	\$ 1,211	ADA COUNTY
2016	ACHD PROJECT	1	\$ 1,211	ADA COUNTY
2016	ACHD PROJECT	1	\$ 1,211	ADA COUNTY
2016	ACHD PROJECT	1	\$ 1,211	ADA COUNTY
2016	ACHD PROJECT	1	\$ 1,211	ADA COUNTY
2016	ACHD PROJECT	1	\$ 1,211	ADA COUNTY
2016	ACHD PROJECT	1	\$ 1,211	ADA COUNTY
2016	ACHD PROJECT	1	\$ 1,211	ADA COUNTY
2016	ACHD PROJECT	1	\$ 1,211	ADA COUNTY
2016	ACHD PROJECT	1	\$ 1,211	ADA COUNTY
2016	ACHD PROJECT	1	\$ 1,211	ADA COUNTY
2016	ACHD PROJECT	1	\$ 1,211	ADA COUNTY
2016	ACHD PROJECT	1	\$ 1,211	ADA COUNTY
2016	ACHD PROJECT	1	\$ 1,211	ADA COUNTY
2016	ACHD PROJECT	1	\$ 1,211	ADA COUNTY
2016	ACHD PROJECT	1	\$ 1,211	ADA COUNTY
2016	ACHD PROJECT	2	\$ 2,422	ADA COUNTY
2016	ACHD PROJECT	1	\$ 1,211	ADA COUNTY
2016	ACHD PROJECT	1	\$ 1,211	ADA COUNTY
2016	ACHD PROJECT	1	\$ 1,211	ADA COUNTY
2016	ACHD PROJECT	1	\$ 1,211	ADA COUNTY
2016	ACHD PROJECT	2	\$ 2,422	ADA COUNTY
2016	ACHD PROJECT	1	\$ 1,211	ADA COUNTY
2016	ACHD PROJECT	1	\$ 1,211	ADA COUNTY
2016	ACHD PROJECT	1	\$ 1,211	ADA COUNTY
2016	ACHD PROJECT	1	\$ 1,211	ADA COUNTY
2016	ACHD PROJECT	1	\$ 1,211	ADA COUNTY
2016	ACHD PROJECT	1	\$ 1,211	ADA COUNTY
2016	ACHD PROJECT	1	\$ 1,211	ADA COUNTY
2016	ACHD PROJECT	1	\$ 1,211	ADA COUNTY
2016	ACHD PROJECT	1	\$ 1,211	ADA COUNTY
2016	ACHD PROJECT	1	\$ 1,211	ADA COUNTY
2016	ACHD PROJECT	1	\$ 1,211	ADA COUNTY
2016	ACHD PROJECT	2	\$ 2,422	ADA COUNTY
2016	ACHD PROJECT	1	\$ 1,211	BOISE
2016	ACHD PROJECT	1	\$ 1,211	BOISE
2016	ACHD PROJECT	1	\$ 1,211	BOISE
2016	ACHD PROJECT	1	\$ 1,211	BOISE
2016	ACHD PROJECT	1	\$ 1,211	BOISE

2016	ACHD PROJECT	1	\$ 1,211	BOISE
2016	ACHD PROJECT	1	\$ 1,211	BOISE
2016	ACHD PROJECT	1	\$ 1,211	BOISE
2016	ACHD PROJECT	2	\$ 2,422	BOISE
2016	ACHD PROJECT	1	\$ 1,211	BOISE
2016	ACHD PROJECT	2	\$ 2,422	BOISE
2016	ACHD PROJECT	2	\$ 2,422	BOISE
2016	ACHD PROJECT	1	\$ 1,211	BOISE
2016	ACHD PROJECT	1	\$ 1,211	BOISE
2016	ACHD PROJECT	1	\$ 1,211	BOISE
2016	ACHD PROJECT	1	\$ 1,211	BOISE
2016	ACHD PROJECT	1	\$ 1,211	BOISE
2016	ACHD PROJECT	1	\$ 1,211	BOISE
2016	ACHD PROJECT	1	\$ 1,211	BOISE
2016	ACHD PROJECT	1	\$ 1,211	BOISE
2016	ACHD PROJECT	1	\$ 1,211	BOISE
2016	ACHD PROJECT	1	\$ 1,211	BOISE
2016	ACHD PROJECT	1	\$ 1,211	BOISE
2016	ACHD PROJECT	1	\$ 1,211	BOISE
2016	ACHD PROJECT	1	\$ 1,211	BOISE
2016	ACHD PROJECT	1	\$ 1,211	BOISE
2016	ACHD PROJECT	1	\$ 1,211	BOISE
2016	ACHD PROJECT	1	\$ 1,211	BOISE
2016	ACHD PROJECT	1	\$ 1,211	EAGLE
2016	ACHD PROJECT	1	\$ 1,211	EAGLE
2016	ACHD PROJECT	1	\$ 1,211	EAGLE
2016	ACHD PROJECT	1	\$ 1,211	EAGLE
2016	ACHD PROJECT	1	\$ 1,211	EAGLE
2016	ACHD PROJECT	2	\$ 2,422	EAGLE
2016	ACHD PROJECT	2	\$ 2,422	KUNA
2016	ACHD PROJECT	2	\$ 2,422	KUNA
2016	ACHD PROJECT	1	\$ 1,211	KUNA
2016	ACHD PROJECT	1	\$ 1,211	KUNA
2016	ACHD PROJECT	1	\$ 1,211	KUNA
2016	ACHD PROJECT	1	\$ 1,211	KUNA
2016	ACHD PROJECT	1	\$ 1,211	KUNA
2016	ACHD PROJECT	1	\$ 1,211	KUNA
2016	ACHD PROJECT	1	\$ 1,211	KUNA
2016	ACHD PROJECT	1	\$ 1,211	KUNA
2016	ACHD PROJECT	2	\$ 2,422	KUNA
2016	ACHD PROJECT	1	\$ 1,211	KUNA
2016	ACHD PROJECT	1	\$ 1,211	KUNA
2016	ACHD PROJECT	1	\$ 1,211	KUNA
2016	ACHD PROJECT	1	\$ 1,211	KUNA
2016	ACHD PROJECT	1	\$ 1,211	KUNA
2016	ACHD PROJECT	2	\$ 2,422	KUNA
2016	ACHD PROJECT	2	\$ 2,422	KUNA
2016	ACHD PROJECT	1	\$ 1,211	KUNA
2016	ACHD PROJECT	1	\$ 1,211	KUNA

2016	ACHD PROJECT	1	\$ 1,211	KUNA
2016	ACHD PROJECT	2	\$ 2,422	KUNA
2016	ACHD PROJECT	1	\$ 1,211	KUNA
2016	ACHD PROJECT	1	\$ 1,211	KUNA
2016	ACHD PROJECT	2	\$ 2,422	KUNA
2016	ACHD PROJECT	1	\$ 1,211	KUNA
2016	ACHD PROJECT	2	\$ 2,422	KUNA
2016	ACHD PROJECT	2	\$ 2,422	KUNA
2016	ACHD PROJECT	1	\$ 1,211	KUNA
2016	ACHD PROJECT	2	\$ 2,422	KUNA
2016	ACHD PROJECT	1	\$ 1,211	MERIDIAN
2016	ACHD PROJECT	1	\$ 1,211	MERIDIAN
2016	ACHD PROJECT	1	\$ 1,211	MERIDIAN
2016	ACHD PROJECT	1	\$ 1,211	MERIDIAN
2016	ACHD PROJECT	1	\$ 1,211	MERIDIAN
2016	ACHD PROJECT	1	\$ 1,211	MERIDIAN
2016	ACHD PROJECT	1	\$ 1,211	MERIDIAN
2016	ACHD PROJECT	1	\$ 1,211	MERIDIAN
2016	ACHD PROJECT	1	\$ 1,211	MERIDIAN
2016	ACHD PROJECT	1	\$ 1,211	MERIDIAN
2016	ACHD PROJECT	1	\$ 1,211	MERIDIAN
2016	ACHD PROJECT	1	\$ 1,211	MERIDIAN
2016	ACHD PROJECT	1	\$ 1,211	MERIDIAN
2016	ACHD PROJECT	1	\$ 1,211	MERIDIAN
2016	ACHD PROJECT	1	\$ 1,211	MERIDIAN
2016	ACHD PROJECT	1	\$ 1,211	MERIDIAN
2016	ACHD PROJECT	1	\$ 1,211	MERIDIAN
2016	ACHD PROJECT	1	\$ 1,211	MERIDIAN
2016	ACHD PROJECT	1	\$ 1,211	MERIDIAN
2016	ACHD PROJECT	1	\$ 1,211	MERIDIAN
2016	ACHD PROJECT	2	\$ 2,422	MERIDIAN
2016	ACHD PROJECT	2	\$ 2,422	MERIDIAN
2016	ACHD PROJECT	1	\$ 1,211	MERIDIAN
2016	ACHD PROJECT	1	\$ 1,211	MERIDIAN
2016	ACHD PROJECT	1	\$ 1,211	MERIDIAN
2016	ACHD PROJECT	1	\$ 1,211	MERIDIAN
2016	ACHD PROJECT	1	\$ 1,211	MERIDIAN
2016	ACHD PROJECT	1	\$ 1,211	MERIDIAN
2016	ACHD PROJECT	1	\$ 1,211	MERIDIAN
2016	ACHD PROJECT	1	\$ 1,211	MERIDIAN
2016	ACHD PROJECT	1	\$ 1,211	MERIDIAN
2016	ACHD PROJECT	2	\$ 2,422	MERIDIAN
2016	ACHD PROJECT	1	\$ 1,211	MERIDIAN
2016	ACHD PROJECT	1	\$ 1,211	MERIDIAN
2016	ACHD PROJECT	2	\$ 2,422	MERIDIAN
2016	ACHD PROJECT	1	\$ 1,211	MERIDIAN
2016	ACHD PROJECT	1	\$ 1,211	MERIDIAN
2016	ACHD PROJECT	2	\$ 2,422	MERIDIAN
2016	ACHD PROJECT	1	\$ 1,211	MERIDIAN

2016	ACHD PROJECT	1	\$ 1,211	MERIDIAN
2016	ACHD PROJECT	1	\$ 1,211	MERIDIAN
2016	ACHD PROJECT	1	\$ 1,211	MERIDIAN
2016	ACHD PROJECT	1	\$ 1,211	MERIDIAN
2016	ACHD PROJECT	1	\$ 1,211	MERIDIAN
2016	ACHD PROJECT	1	\$ 1,211	MERIDIAN
2016	ACHD PROJECT	1	\$ 1,211	MERIDIAN
2016	ACHD PROJECT	1	\$ 1,211	MERIDIAN
2016	ACHD PROJECT	1	\$ 1,211	MERIDIAN
2016	ACHD PROJECT	1	\$ 1,211	MERIDIAN

Fiscal Year 2016 Subdivision Pedestrian Ramps

FY	Project Type	Ramps Installed	Cost	Jurisdiction
2016	SUBDIVISION	1	\$ 1,211	ADA COUNTY
2016	SUBDIVISION	1	\$ 1,211	ADA COUNTY
2016	SUBDIVISION	1	\$ 1,211	ADA COUNTY
2016	SUBDIVISION	2	\$ 2,422	ADA COUNTY
2016	SUBDIVISION	1	\$ 1,211	ADA COUNTY
2016	SUBDIVISION	1	\$ 1,211	ADA COUNTY
2016	SUBDIVISION	1	\$ 1,211	ADA COUNTY
2016	SUBDIVISION	2	\$ 2,422	ADA COUNTY
2016	SUBDIVISION	1	\$ 1,211	ADA COUNTY
2016	SUBDIVISION	1	\$ 1,211	ADA COUNTY
2016	SUBDIVISION	1	\$ 1,211	ADA COUNTY
2016	SUBDIVISION	1	\$ 1,211	ADA COUNTY
2016	SUBDIVISION	1	\$ 1,211	ADA COUNTY
2016	SUBDIVISION	1	\$ 1,211	ADA COUNTY
2016	SUBDIVISION	1	\$ 1,211	ADA COUNTY
2016	SUBDIVISION	2	\$ 2,422	ADA COUNTY
2016	SUBDIVISION	1	\$ 1,211	ADA COUNTY
2016	SUBDIVISION	2	\$ 2,422	ADA COUNTY
2016	SUBDIVISION	2	\$ 2,422	ADA COUNTY
2016	SUBDIVISION	2	\$ 2,422	ADA COUNTY
2016	SUBDIVISION	2	\$ 2,422	ADA COUNTY
2016	SUBDIVISION	1	\$ 1,211	ADA COUNTY
2016	SUBDIVISION	1	\$ 1,211	ADA COUNTY
2016	SUBDIVISION	1	\$ 1,211	ADA COUNTY
2016	SUBDIVISION	1	\$ 1,211	ADA COUNTY
2016	SUBDIVISION	1	\$ 1,211	ADA COUNTY
2016	SUBDIVISION	1	\$ 1,211	ADA COUNTY
2016	SUBDIVISION	1	\$ 1,211	ADA COUNTY
2016	SUBDIVISION	1	\$ 1,211	ADA COUNTY
2016	SUBDIVISION	1	\$ 1,211	ADA COUNTY
2016	SUBDIVISION	1	\$ 1,211	ADA COUNTY
2016	SUBDIVISION	1	\$ 1,211	ADA COUNTY
2016	SUBDIVISION	1	\$ 1,211	ADA COUNTY
2016	SUBDIVISION	1	\$ 1,211	ADA COUNTY
2016	SUBDIVISION	1	\$ 1,211	ADA COUNTY
2016	SUBDIVISION	2	\$ 2,422	ADA COUNTY
2016	SUBDIVISION	1	\$ 1,211	ADA COUNTY
2016	SUBDIVISION	2	\$ 2,422	ADA COUNTY
2016	SUBDIVISION	2	\$ 2,422	ADA COUNTY
2016	SUBDIVISION	1	\$ 1,211	ADA COUNTY
2016	SUBDIVISION	2	\$ 2,422	ADA COUNTY
2016	SUBDIVISION	2	\$ 2,422	ADA COUNTY
2016	SUBDIVISION	1	\$ 1,211	ADA COUNTY
2016	SUBDIVISION	2	\$ 2,422	ADA COUNTY
2016	SUBDIVISION	2	\$ 2,422	ADA COUNTY
2016	SUBDIVISION	2	\$ 2,422	ADA COUNTY
2016	SUBDIVISION	1	\$ 1,211	ADA COUNTY
2016	SUBDIVISION	2	\$ 2,422	ADA COUNTY
2016	SUBDIVISION	2	\$ 2,422	ADA COUNTY
2016	SUBDIVISION	1	\$ 1,211	ADA COUNTY

2016	SUBDIVISION	2	\$ 2,422	BOISE
2016	SUBDIVISION	2	\$ 2,422	BOISE
2016	SUBDIVISION	2	\$ 2,422	BOISE
2016	SUBDIVISION	2	\$ 2,422	BOISE
2016	SUBDIVISION	1	\$ 1,211	BOISE
2016	SUBDIVISION	1	\$ 1,211	BOISE
2016	SUBDIVISION	1	\$ 1,211	BOISE
2016	SUBDIVISION	1	\$ 1,211	BOISE
2016	SUBDIVISION	1	\$ 1,211	BOISE
2016	SUBDIVISION	1	\$ 1,211	BOISE
2016	SUBDIVISION	1	\$ 1,211	BOISE
2016	SUBDIVISION	1	\$ 1,211	BOISE
2016	SUBDIVISION	1	\$ 1,211	BOISE
2016	SUBDIVISION	1	\$ 1,211	BOISE
2016	SUBDIVISION	1	\$ 1,211	BOISE
2016	SUBDIVISION	1	\$ 1,211	BOISE
2016	SUBDIVISION	1	\$ 1,211	BOISE
2016	SUBDIVISION	1	\$ 1,211	BOISE
2016	SUBDIVISION	1	\$ 1,211	EAGLE
2016	SUBDIVISION	1	\$ 1,211	EAGLE
2016	SUBDIVISION	1	\$ 1,211	EAGLE
2016	SUBDIVISION	1	\$ 1,211	EAGLE
2016	SUBDIVISION	1	\$ 1,211	EAGLE
2016	SUBDIVISION	1	\$ 1,211	EAGLE
2016	SUBDIVISION	1	\$ 1,211	EAGLE
2016	SUBDIVISION	1	\$ 1,211	EAGLE
2016	SUBDIVISION	1	\$ 1,211	EAGLE
2016	SUBDIVISION	1	\$ 1,211	EAGLE
2016	SUBDIVISION	1	\$ 1,211	EAGLE
2016	SUBDIVISION	1	\$ 1,211	EAGLE
2016	SUBDIVISION	1	\$ 1,211	EAGLE
2016	SUBDIVISION	1	\$ 1,211	EAGLE
2016	SUBDIVISION	1	\$ 1,211	EAGLE
2016	SUBDIVISION	1	\$ 1,211	EAGLE
2016	SUBDIVISION	2	\$ 2,422	EAGLE
2016	SUBDIVISION	2	\$ 2,422	EAGLE
2016	SUBDIVISION	2	\$ 2,422	EAGLE
2016	SUBDIVISION	2	\$ 2,422	EAGLE
2016	SUBDIVISION	2	\$ 2,422	EAGLE
2016	SUBDIVISION	2	\$ 2,422	EAGLE
2016	SUBDIVISION	2	\$ 2,422	EAGLE
2016	SUBDIVISION	2	\$ 2,422	EAGLE
2016	SUBDIVISION	2	\$ 2,422	EAGLE
2016	SUBDIVISION	2	\$ 2,422	EAGLE
2016	SUBDIVISION	2	\$ 2,422	EAGLE
2016	SUBDIVISION	1	\$ 1,211	EAGLE
2016	SUBDIVISION	1	\$ 1,211	EAGLE
2016	SUBDIVISION	2	\$ 2,422	EAGLE
2016	SUBDIVISION	1	\$ 1,211	EAGLE
2016	SUBDIVISION	1	\$ 1,211	EAGLE
2016	SUBDIVISION	2	\$ 2,422	EAGLE
2016	SUBDIVISION	1	\$ 1,211	EAGLE
2016	SUBDIVISION	2	\$ 2,422	EAGLE
2016	SUBDIVISION	1	\$ 1,211	EAGLE

2016	SUBDIVISION	1	\$ 1,211	EAGLE
2016	SUBDIVISION	1	\$ 1,211	EAGLE
2016	SUBDIVISION	1	\$ 1,211	EAGLE
2016	SUBDIVISION	2	\$ 2,422	EAGLE
2016	SUBDIVISION	2	\$ 2,422	EAGLE
2016	SUBDIVISION	2	\$ 2,422	EAGLE
2016	SUBDIVISION	1	\$ 1,211	EAGLE
2016	SUBDIVISION	2	\$ 2,422	EAGLE
2016	SUBDIVISION	1	\$ 1,211	EAGLE
2016	SUBDIVISION	1	\$ 1,211	EAGLE
2016	SUBDIVISION	1	\$ 1,211	EAGLE
2016	SUBDIVISION	1	\$ 1,211	EAGLE
2016	SUBDIVISION	1	\$ 1,211	EAGLE
2016	SUBDIVISION	2	\$ 2,422	EAGLE
2016	SUBDIVISION	2	\$ 2,422	EAGLE
2016	SUBDIVISION	1	\$ 1,211	EAGLE
2016	SUBDIVISION	1	\$ 1,211	EAGLE
2016	SUBDIVISION	1	\$ 1,211	EAGLE
2016	SUBDIVISION	1	\$ 1,211	EAGLE
2016	SUBDIVISION	1	\$ 1,211	EAGLE
2016	SUBDIVISION	1	\$ 1,211	EAGLE
2016	SUBDIVISION	1	\$ 1,211	EAGLE
2016	SUBDIVISION	1	\$ 1,211	EAGLE
2016	SUBDIVISION	1	\$ 1,211	EAGLE
2016	SUBDIVISION	1	\$ 1,211	EAGLE
2016	SUBDIVISION	1	\$ 1,211	EAGLE
2016	SUBDIVISION	1	\$ 1,211	EAGLE
2016	SUBDIVISION	2	\$ 2,422	EAGLE
2016	SUBDIVISION	1	\$ 1,211	EAGLE
2016	SUBDIVISION	1	\$ 1,211	EAGLE
2016	SUBDIVISION	1	\$ 1,211	EAGLE
2016	SUBDIVISION	1	\$ 1,211	EAGLE
2016	SUBDIVISION	1	\$ 1,211	EAGLE
2016	SUBDIVISION	1	\$ 1,211	EAGLE
2016	SUBDIVISION	1	\$ 1,211	EAGLE
2016	SUBDIVISION	1	\$ 1,211	EAGLE
2016	SUBDIVISION	1	\$ 1,211	EAGLE
2016	SUBDIVISION	1	\$ 1,211	EAGLE
2016	SUBDIVISION	1	\$ 1,211	EAGLE
2016	SUBDIVISION	1	\$ 1,211	EAGLE
2016	SUBDIVISION	1	\$ 1,211	EAGLE
2016	SUBDIVISION	1	\$ 1,211	EAGLE
2016	SUBDIVISION	2	\$ 2,422	EAGLE
2016	SUBDIVISION	2	\$ 2,422	EAGLE

2016	SUBDIVISION	1	\$ 1,211	EAGLE
2016	SUBDIVISION	1	\$ 1,211	EAGLE
2016	SUBDIVISION	1	\$ 1,211	EAGLE
2016	SUBDIVISION	1	\$ 1,211	EAGLE
2016	SUBDIVISION	1	\$ 1,211	EAGLE
2016	SUBDIVISION	1	\$ 1,211	EAGLE
2016	SUBDIVISION	1	\$ 1,211	EAGLE
2016	SUBDIVISION	1	\$ 1,211	EAGLE
2016	SUBDIVISION	1	\$ 1,211	EAGLE
2016	SUBDIVISION	1	\$ 1,211	EAGLE
2016	SUBDIVISION	1	\$ 1,211	EAGLE
2016	SUBDIVISION	1	\$ 1,211	EAGLE
2016	SUBDIVISION	2	\$ 2,422	EAGLE
2016	SUBDIVISION	2	\$ 2,422	EAGLE
2016	SUBDIVISION	1	\$ 1,211	EAGLE
2016	SUBDIVISION	1	\$ 1,211	EAGLE
2016	SUBDIVISION	1	\$ 1,211	EAGLE
2016	SUBDIVISION	2	\$ 2,422	EAGLE
2016	SUBDIVISION	1	\$ 1,211	EAGLE
2016	SUBDIVISION	1	\$ 1,211	EAGLE
2016	SUBDIVISION	2	\$ 2,422	EAGLE
2016	SUBDIVISION	1	\$ 1,211	EAGLE
2016	SUBDIVISION	2	\$ 2,422	EAGLE
2016	SUBDIVISION	1	\$ 1,211	EAGLE
2016	SUBDIVISION	2	\$ 2,422	EAGLE
2016	SUBDIVISION	2	\$ 2,422	EAGLE
2016	SUBDIVISION	2	\$ 2,422	EAGLE
2016	SUBDIVISION	2	\$ 2,422	EAGLE
2016	SUBDIVISION	1	\$ 1,211	EAGLE
2016	SUBDIVISION	2	\$ 2,422	EAGLE
2016	SUBDIVISION	2	\$ 2,422	EAGLE
2016	SUBDIVISION	2	\$ 2,422	EAGLE
2016	SUBDIVISION	2	\$ 2,422	EAGLE
2016	SUBDIVISION	2	\$ 2,422	EAGLE
2016	SUBDIVISION	2	\$ 2,422	EAGLE
2016	SUBDIVISION	1	\$ 1,211	EAGLE
2016	SUBDIVISION	2	\$ 2,422	EAGLE
2016	SUBDIVISION	1	\$ 1,211	EAGLE
2016	SUBDIVISION	1	\$ 1,211	EAGLE
2016	SUBDIVISION	1	\$ 1,211	EAGLE
2016	SUBDIVISION	2	\$ 2,422	EAGLE
2016	SUBDIVISION	1	\$ 1,211	EAGLE
2016	SUBDIVISION	1	\$ 1,211	EAGLE
2016	SUBDIVISION	1	\$ 1,211	EAGLE
2016	SUBDIVISION	1	\$ 1,211	EAGLE
2016	SUBDIVISION	1	\$ 1,211	EAGLE
2016	SUBDIVISION	2	\$ 2,422	EAGLE
2016	SUBDIVISION	1	\$ 1,211	EAGLE
2016	SUBDIVISION	1	\$ 1,211	EAGLE
2016	SUBDIVISION	1	\$ 1,211	EAGLE
2016	SUBDIVISION	1	\$ 1,211	EAGLE
2016	SUBDIVISION	1	\$ 1,211	EAGLE
2016	SUBDIVISION	1	\$ 1,211	EAGLE
2016	SUBDIVISION	1	\$ 1,211	EAGLE
2016	SUBDIVISION	1	\$ 1,211	EAGLE

2016	SUBDIVISION	1	\$ 1,211	EAGLE
2016	SUBDIVISION	1	\$ 1,211	EAGLE
2016	SUBDIVISION	1	\$ 1,211	EAGLE
2016	SUBDIVISION	2	\$ 2,422	EAGLE
2016	SUBDIVISION	1	\$ 1,211	EAGLE
2016	SUBDIVISION	1	\$ 1,211	EAGLE
2016	SUBDIVISION	2	\$ 2,422	EAGLE
2016	SUBDIVISION	1	\$ 1,211	EAGLE
2016	SUBDIVISION	1	\$ 1,211	EAGLE
2016	SUBDIVISION	2	\$ 2,422	EAGLE
2016	SUBDIVISION	1	\$ 1,211	EAGLE
2016	SUBDIVISION	1	\$ 1,211	EAGLE
2016	SUBDIVISION	1	\$ 1,211	EAGLE
2016	SUBDIVISION	1	\$ 1,211	EAGLE
2016	SUBDIVISION	1	\$ 1,211	EAGLE
2016	SUBDIVISION	1	\$ 1,211	EAGLE
2016	SUBDIVISION	1	\$ 1,211	EAGLE
2016	SUBDIVISION	1	\$ 1,211	EAGLE
2016	SUBDIVISION	1	\$ 1,211	EAGLE
2016	SUBDIVISION	1	\$ 1,211	EAGLE
2016	SUBDIVISION	1	\$ 1,211	EAGLE
2016	SUBDIVISION	1	\$ 1,211	EAGLE
2016	SUBDIVISION	1	\$ 1,211	EAGLE
2016	SUBDIVISION	1	\$ 1,211	EAGLE
2016	SUBDIVISION	2	\$ 2,422	EAGLE
2016	SUBDIVISION	1	\$ 1,211	EAGLE
2016	SUBDIVISION	2	\$ 2,422	EAGLE
2016	SUBDIVISION	1	\$ 1,211	EAGLE
2016	SUBDIVISION	1	\$ 1,211	EAGLE
2016	SUBDIVISION	1	\$ 1,211	EAGLE
2016	SUBDIVISION	1	\$ 1,211	EAGLE
2016	SUBDIVISION	1	\$ 1,211	EAGLE
2016	SUBDIVISION	1	\$ 1,211	EAGLE
2016	SUBDIVISION	1	\$ 1,211	EAGLE
2016	SUBDIVISION	1	\$ 1,211	EAGLE
2016	SUBDIVISION	1	\$ 1,211	EAGLE
2016	SUBDIVISION	2	\$ 2,422	EAGLE
2016	SUBDIVISION	1	\$ 1,211	EAGLE
2016	SUBDIVISION	1	\$ 1,211	EAGLE
2016	SUBDIVISION	2	\$ 2,422	EAGLE
2016	SUBDIVISION	1	\$ 1,211	EAGLE
2016	SUBDIVISION	2	\$ 2,422	EAGLE
2016	SUBDIVISION	2	\$ 2,422	EAGLE
2016	SUBDIVISION	2	\$ 2,422	EAGLE
2016	SUBDIVISION	2	\$ 2,422	EAGLE
2016	SUBDIVISION	1	\$ 1,211	EAGLE
2016	SUBDIVISION	1	\$ 1,211	EAGLE
2016	SUBDIVISION	1	\$ 1,211	EAGLE
2016	SUBDIVISION	1	\$ 1,211	EAGLE
2016	SUBDIVISION	1	\$ 1,211	EAGLE

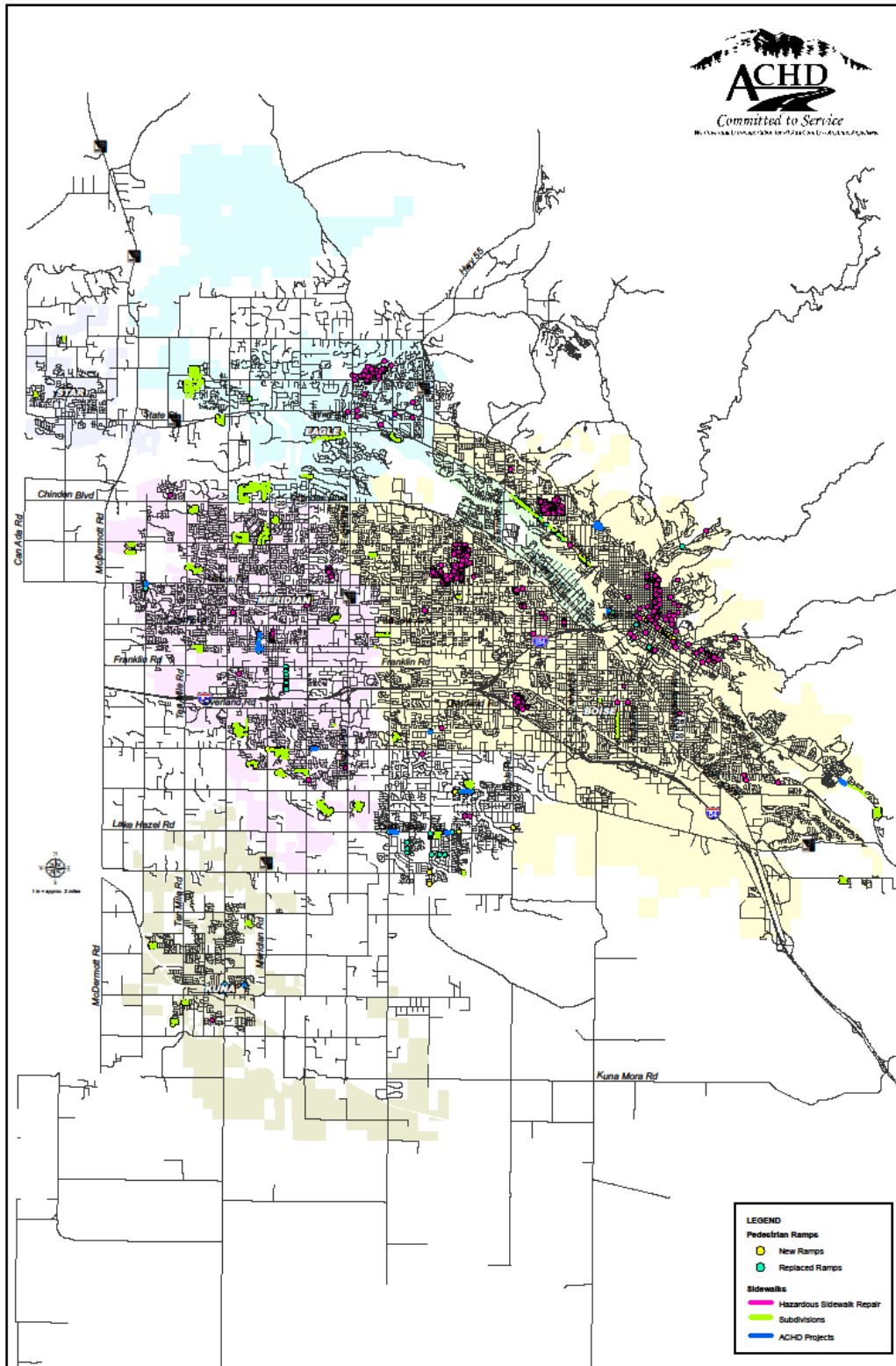
2016	SUBDIVISION	1	\$ 1,211	EAGLE
2016	SUBDIVISION	1	\$ 1,211	EAGLE
2016	SUBDIVISION	1	\$ 1,211	EAGLE
2016	SUBDIVISION	2	\$ 2,422	EAGLE
2016	SUBDIVISION	1	\$ 1,211	EAGLE
2016	SUBDIVISION	1	\$ 1,211	EAGLE
2016	SUBDIVISION	1	\$ 1,211	EAGLE
2016	SUBDIVISION	1	\$ 1,211	EAGLE
2016	SUBDIVISION	1	\$ 1,211	EAGLE
2016	SUBDIVISION	1	\$ 1,211	EAGLE
2016	SUBDIVISION	1	\$ 1,211	KUNA
2016	SUBDIVISION	1	\$ 1,211	KUNA
2016	SUBDIVISION	2	\$ 2,422	KUNA
2016	SUBDIVISION	1	\$ 1,211	KUNA
2016	SUBDIVISION	1	\$ 1,211	KUNA
2016	SUBDIVISION	1	\$ 1,211	KUNA
2016	SUBDIVISION	2	\$ 2,422	KUNA
2016	SUBDIVISION	1	\$ 1,211	KUNA
2016	SUBDIVISION	1	\$ 1,211	KUNA
2016	SUBDIVISION	1	\$ 1,211	KUNA
2016	SUBDIVISION	1	\$ 1,211	KUNA
2016	SUBDIVISION	1	\$ 1,211	KUNA
2016	SUBDIVISION	2	\$ 2,422	KUNA
2016	SUBDIVISION	1	\$ 1,211	KUNA
2016	SUBDIVISION	1	\$ 1,211	KUNA
2016	SUBDIVISION	2	\$ 2,422	KUNA
2016	SUBDIVISION	2	\$ 2,422	KUNA
2016	SUBDIVISION	1	\$ 1,211	KUNA
2016	SUBDIVISION	2	\$ 2,422	KUNA
2016	SUBDIVISION	1	\$ 1,211	KUNA
2016	SUBDIVISION	1	\$ 1,211	KUNA
2016	SUBDIVISION	2	\$ 2,422	KUNA
2016	SUBDIVISION	2	\$ 2,422	KUNA
2016	SUBDIVISION	1	\$ 1,211	KUNA
2016	SUBDIVISION	1	\$ 1,211	KUNA
2016	SUBDIVISION	2	\$ 2,422	KUNA
2016	SUBDIVISION	1	\$ 1,211	KUNA
2016	SUBDIVISION	1	\$ 1,211	KUNA
2016	SUBDIVISION	1	\$ 1,211	MERIDIAN
2016	SUBDIVISION	1	\$ 1,211	MERIDIAN
2016	SUBDIVISION	1	\$ 1,211	MERIDIAN
2016	SUBDIVISION	1	\$ 1,211	MERIDIAN
2016	SUBDIVISION	1	\$ 1,211	MERIDIAN
2016	SUBDIVISION	1	\$ 1,211	MERIDIAN
2016	SUBDIVISION	2	\$ 2,422	MERIDIAN
2016	SUBDIVISION	2	\$ 2,422	MERIDIAN
2016	SUBDIVISION	1	\$ 1,211	MERIDIAN
2016	SUBDIVISION	1	\$ 1,211	MERIDIAN
2016	SUBDIVISION	1	\$ 1,211	MERIDIAN
2016	SUBDIVISION	2	\$ 2,422	MERIDIAN

2016	SUBDIVISION	2	\$ 2,422	MERIDIAN
2016	SUBDIVISION	2	\$ 2,422	MERIDIAN
2016	SUBDIVISION	2	\$ 2,422	MERIDIAN
2016	SUBDIVISION	2	\$ 2,422	MERIDIAN
2016	SUBDIVISION	2	\$ 2,422	MERIDIAN
2016	SUBDIVISION	1	\$ 1,211	MERIDIAN
2016	SUBDIVISION	1	\$ 1,211	MERIDIAN
2016	SUBDIVISION	2	\$ 2,422	MERIDIAN
2016	SUBDIVISION	2	\$ 2,422	MERIDIAN
2016	SUBDIVISION	2	\$ 2,422	MERIDIAN
2016	SUBDIVISION	2	\$ 2,422	MERIDIAN
2016	SUBDIVISION	2	\$ 2,422	MERIDIAN
2016	SUBDIVISION	1	\$ 1,211	MERIDIAN
2016	SUBDIVISION	1	\$ 1,211	MERIDIAN
2016	SUBDIVISION	1	\$ 1,211	MERIDIAN
2016	SUBDIVISION	2	\$ 2,422	MERIDIAN
2016	SUBDIVISION	1	\$ 1,211	MERIDIAN
2016	SUBDIVISION	2	\$ 2,422	MERIDIAN
2016	SUBDIVISION	2	\$ 2,422	MERIDIAN
2016	SUBDIVISION	2	\$ 2,422	MERIDIAN
2016	SUBDIVISION	1	\$ 1,211	MERIDIAN
2016	SUBDIVISION	2	\$ 2,422	MERIDIAN
2016	SUBDIVISION	1	\$ 1,211	MERIDIAN
2016	SUBDIVISION	2	\$ 2,422	MERIDIAN
2016	SUBDIVISION	1	\$ 1,211	MERIDIAN
2016	SUBDIVISION	2	\$ 2,422	MERIDIAN
2016	SUBDIVISION	1	\$ 1,211	MERIDIAN
2016	SUBDIVISION	2	\$ 2,422	MERIDIAN
2016	SUBDIVISION	1	\$ 1,211	MERIDIAN
2016	SUBDIVISION	1	\$ 1,211	MERIDIAN
2016	SUBDIVISION	2	\$ 2,422	MERIDIAN
2016	SUBDIVISION	1	\$ 1,211	MERIDIAN
2016	SUBDIVISION	1	\$ 1,211	MERIDIAN
2016	SUBDIVISION	1	\$ 1,211	MERIDIAN
2016	SUBDIVISION	1	\$ 1,211	MERIDIAN
2016	SUBDIVISION	1	\$ 1,211	MERIDIAN
2016	SUBDIVISION	1	\$ 1,211	MERIDIAN
2016	SUBDIVISION	1	\$ 1,211	MERIDIAN
2016	SUBDIVISION	1	\$ 1,211	MERIDIAN
2016	SUBDIVISION	1	\$ 1,211	MERIDIAN
2016	SUBDIVISION	1	\$ 1,211	MERIDIAN
2016	SUBDIVISION	1	\$ 1,211	MERIDIAN
2016	SUBDIVISION	1	\$ 1,211	MERIDIAN
2016	SUBDIVISION	1	\$ 1,211	MERIDIAN
2016	SUBDIVISION	1	\$ 1,211	MERIDIAN
2016	SUBDIVISION	1	\$ 1,211	MERIDIAN

2016	SUBDIVISION	1	\$ 1,211	MERIDIAN
2016	SUBDIVISION	1	\$ 1,211	MERIDIAN
2016	SUBDIVISION	1	\$ 1,211	MERIDIAN
2016	SUBDIVISION	2	\$ 2,422	MERIDIAN
2016	SUBDIVISION	1	\$ 1,211	MERIDIAN
2016	SUBDIVISION	1	\$ 1,211	MERIDIAN
2016	SUBDIVISION	1	\$ 1,211	MERIDIAN
2016	SUBDIVISION	2	\$ 2,422	MERIDIAN
2016	SUBDIVISION	2	\$ 2,422	MERIDIAN
2016	SUBDIVISION	1	\$ 1,211	MERIDIAN
2016	SUBDIVISION	2	\$ 2,422	MERIDIAN
2016	SUBDIVISION	2	\$ 2,422	MERIDIAN
2016	SUBDIVISION	1	\$ 1,211	MERIDIAN
2016	SUBDIVISION	1	\$ 1,211	MERIDIAN
2016	SUBDIVISION	1	\$ 1,211	MERIDIAN
2016	SUBDIVISION	1	\$ 1,211	MERIDIAN
2016	SUBDIVISION	2	\$ 2,422	MERIDIAN
2016	SUBDIVISION	1	\$ 1,211	MERIDIAN
2016	SUBDIVISION	1	\$ 1,211	MERIDIAN
2016	SUBDIVISION	2	\$ 2,422	MERIDIAN
2016	SUBDIVISION	1	\$ 1,211	MERIDIAN
2016	SUBDIVISION	1	\$ 1,211	MERIDIAN
2016	SUBDIVISION	1	\$ 1,211	MERIDIAN
2016	SUBDIVISION	1	\$ 1,211	MERIDIAN
2016	SUBDIVISION	1	\$ 1,211	MERIDIAN
2016	SUBDIVISION	1	\$ 1,211	MERIDIAN
2016	SUBDIVISION	1	\$ 1,211	MERIDIAN
2016	SUBDIVISION	1	\$ 1,211	MERIDIAN
2016	SUBDIVISION	1	\$ 1,211	MERIDIAN
2016	SUBDIVISION	1	\$ 1,211	MERIDIAN
2016	SUBDIVISION	1	\$ 1,211	MERIDIAN
2016	SUBDIVISION	1	\$ 1,211	MERIDIAN
2016	SUBDIVISION	1	\$ 1,211	MERIDIAN
2016	SUBDIVISION	1	\$ 1,211	MERIDIAN
2016	SUBDIVISION	1	\$ 1,211	MERIDIAN
2016	SUBDIVISION	1	\$ 1,211	MERIDIAN
2016	SUBDIVISION	1	\$ 1,211	MERIDIAN
2016	SUBDIVISION	2	\$ 2,422	MERIDIAN
2016	SUBDIVISION	1	\$ 1,211	MERIDIAN
2016	SUBDIVISION	1	\$ 1,211	MERIDIAN
2016	SUBDIVISION	2	\$ 2,422	MERIDIAN
2016	SUBDIVISION	1	\$ 1,211	MERIDIAN
2016	SUBDIVISION	1	\$ 1,211	MERIDIAN
2016	SUBDIVISION	1	\$ 1,211	MERIDIAN
2016	SUBDIVISION	2	\$ 2,422	MERIDIAN
2016	SUBDIVISION	1	\$ 1,211	MERIDIAN
2016	SUBDIVISION	1	\$ 1,211	MERIDIAN
2016	SUBDIVISION	1	\$ 1,211	MERIDIAN
2016	SUBDIVISION	1	\$ 1,211	MERIDIAN
2016	SUBDIVISION	1	\$ 1,211	MERIDIAN

2016	SUBDIVISION	1	\$ 1,211	MERIDIAN
2016	SUBDIVISION	1	\$ 1,211	MERIDIAN
2016	SUBDIVISION	2	\$ 2,422	MERIDIAN
2016	SUBDIVISION	1	\$ 1,211	MERIDIAN
2016	SUBDIVISION	1	\$ 1,211	MERIDIAN
2016	SUBDIVISION	1	\$ 1,211	MERIDIAN
2016	SUBDIVISION	1	\$ 1,211	MERIDIAN
2016	SUBDIVISION	1	\$ 1,211	MERIDIAN
2016	SUBDIVISION	1	\$ 1,211	MERIDIAN
2016	SUBDIVISION	1	\$ 1,211	MERIDIAN
2016	SUBDIVISION	1	\$ 1,211	MERIDIAN
2016	SUBDIVISION	1	\$ 1,211	MERIDIAN
2016	SUBDIVISION	1	\$ 1,211	MERIDIAN
2016	SUBDIVISION	1	\$ 1,211	MERIDIAN
2016	SUBDIVISION	1	\$ 1,211	MERIDIAN
2016	SUBDIVISION	1	\$ 1,211	MERIDIAN
2016	SUBDIVISION	1	\$ 1,211	MERIDIAN
2016	SUBDIVISION	1	\$ 1,211	MERIDIAN
2016	SUBDIVISION	1	\$ 1,211	MERIDIAN
2016	SUBDIVISION	1	\$ 1,211	STAR
2016	SUBDIVISION	1	\$ 1,211	STAR
2016	SUBDIVISION	2	\$ 2,422	STAR
2016	SUBDIVISION	1	\$ 1,211	STAR
2016	SUBDIVISION	1	\$ 1,211	STAR
2016	SUBDIVISION	2	\$ 2,422	STAR
2016	SUBDIVISION	2	\$ 2,422	STAR
2016	SUBDIVISION	1	\$ 1,211	STAR
2016	SUBDIVISION	1	\$ 1,211	STAR

Appendix C



Ada County Highway District
2016 Sidewalk & Pedestrian Ramp Projects