



ACHD

Annual Report

ADA COUNTY HIGHWAY DISTRICT • 2013

ACHD Mission & Vision

Our Vision

Leading transportation innovation - investing in communities.

Our Mission

We drive quality transportation for all Ada County - Anytime, Anywhere!

Our Priorities

Serve as the criteria for judging every choice we make going forward

*Our People - our competitive edge in the work place is the source of our strength.
Effective and efficient execution, assuring:*

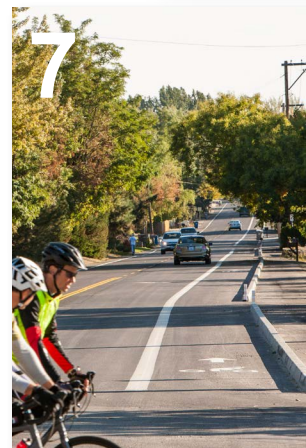
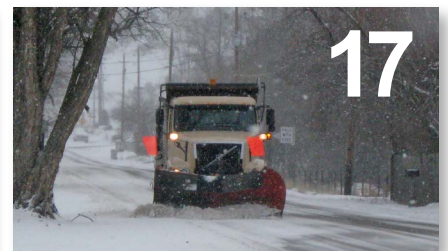
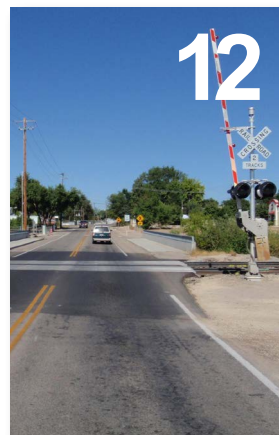
- Excellence in service and performance
- Teamwork
- Fiscal responsibility in expending taxpayer dollars
- Responsiveness to regional and community needs
- Customer service
- The promotion of economic development with each community
- The preservation of our multi-billion dollar infrastructure investment
- Preparation for future growth

*Leaders in technology, design, and innovation
Safety throughout the District for its employees and citizens*



Table of contents

Leadership messages	4
Our people	9
Excellence in service and performance	10
Teamwork	11
Fiscal responsibility	12
Responsiveness	15
Customer service	16
Economic development	17
Infrastructure investment	18
Future growth	19
Technology, design, and innovation	20
Safety	21



ACHD Commission



The Ada County Highway District always strives to improve operations and try new things. Keeping Ada County's roadways on the forefront of innovation require us to look beyond the way we've always done our job to find the enhancements to our operations. This past year was a great example.

In 2013, we introduced our Economic Development Program, recognizing a need for an initiative to consider transportation investments that will address needs apart from safety or capacity. We wanted a way for the each city to request projects that enhance the transportation system and local economy but would not be built through our normal programs, which primarily emphasize safety and traffic flow. For example, the proposed Royal Boulevard extension project in Boise will increase connectivity for bicyclists and pedestrians trying to get to Ann Morrison Park. We are excited to have seven projects on our list, with the first scheduled to begin construction as early as 2014.

Last year we also completed three projects designed to meet cities' economic goals. The largest, the Meridian Split Corridor Project Phase 2, will help the City of Meridian establish its downtown as the center of the community. In Boise, a new north-south connection between State Street and Fairview Avenue, the 30th Street Extension (now Whitewater Park Boulevard), integrated land-use goals and neighborhood revitalization. The new street boasts not only curb, gutter, sidewalk and bike lanes, but also a roundabout at the entrance to the future Esther Simplot Park, landscaped medians and signalized pedestrian crossings. Garden City's 36th Street between Chinden Boulevard and the Waterfront District was revamped to include curb, gutter, sidewalk, street trees and decorative lighting in partnership with the city. This project was also one of our first to use permeable pavers as part of storm water treatment.

Another initiative was the Integrated Five-Year Work Plan. To improve project delivery and day-to-day operations, the new plan combines the time lines for concept, design, right-of-way acquisition and construction of projects with year-by-year plans for maintenance and roadway operations. We now have everything from information technology to chipsealing, in a single plan, which will lead to better coordination and efficiency.

The safety benefits and increased traffic flow offered by roundabouts prompted ACHD to evaluate roundabout viability with every

Photos from top to bottom: Sara M. Baker, President; John S. Franden, Vice President; Rebecca W. Arnold, Commissioner; Mitchell A. Jaurena, Commissioner; Jim Hansen, Commissioner

ACHD Commission

intersection project. The Countywide Roundabout Preservation Plan, a study that evaluated 785 intersections for roundabout feasibility, found that one in three intersections were likely candidates for roundabouts. With the plan we can preserve right-of-way for future improvements, ensuring roundabouts remain options.

As a transportation agency we must provide facilities for all users – motorists, pedestrians, bicyclists and transit riders. Over the course of fiscal year 2013, we developed a proposal to create a north/south bikeway along Shamrock Avenue for cyclists traveling between DeMeyer Park and President Drive. The bikeway will provide a safer route for cyclists and will include bike treatments such as sharrows (pavement markings), wayfinding signs, and signalized pedestrian/bicycle crossings at major intersections. While these tools are not new to ACHD, designating a continuous, bicycle route is a new strategy that has not been implemented before this project.

ACHD has been working closely with the City of Kuna in recent years to develop plans that identify projects and priorities for the transportation infrastructure in the area. This past year ACHD and the city worked on the Kuna Crossing Feasibility and Implementation Plan to identify the need, location and feasibility of a future crossing the Union Pacific railroad tracks and Indian Creek. After several hands-on workshops and an open house, we voted in February to adopt the plan and chose Option 7A: Swan Falls to Linder Road as the preferred option recommended by the city.

Using taxpayer money wisely is a key factor in all of our decision making. In August, we adopted a \$93.3 million budget, keeping the tax rate low while meeting our citizens' needs. The new budget funds several new pedestrian safety projects across Ada County.

Our motto, "Excellence in all we do," motivates us to strive for the best. We expect more innovation and success in 2014.

ACHD Director



Bruce S. Wong

Once again, and on behalf of the Commission and the men and women of the Ada County Highway District, it is my privilege to share with you a glimpse of our team's continuing successes during 2013 – another year of innovation, transformation, and partnership for ACHD and Ada County. Our focus remains simple but razor sharp . . . build on our past success and look toward the future with a keen focus on “excellence in all we do.” Moreover, we are building confidence with our customers in our passion to assure ACHD is “someone you can count on – someone you can trust.”

ACHD's four key priorities continue to serve as the criteria for judging every choice we make: 1) our people — our competitive edge; 2) effective and efficient execution, focusing on economic development; 3) leading in technology, design, and innovation; and 4) a laser focus on safety throughout the District for our employees and citizens. These centers of excellence unquestionably generated new ideas, new strategies, and new opportunities to better serve our more than 422,000 customers – the Ada County taxpayers.

First and foremost, ACHD once again successfully met every road and bridge infrastructure challenge in assuring an outstanding transportation system within Ada County without raising the base property tax or fees for the fifth year in a row. Moreover, we have continued to improve safe routes to school, and pedestrian and bicycle routes throughout Ada County. As a result, ACHD was again recognized by the League of American Bicyclists as the only highway district in the nation with the Silver status for fostering a Bicycle Friendly Community.

The Commission took a \$610,000 new growth assessment this year, taxing the value of improved properties added to the tax roll. These dollars have been specifically allocated for five sidewalk projects throughout Ada County and they will be completed by the end of June 2014 – this is our commitment to you and we will meet it! The bottom line is, in 2013 we again lived within our means while increasing our operations outputs and customer support, reducing traffic congestion at critical intersections and major arterials, and improving traffic signal operations. Moreover, we refined our state-of-the-art pavement assessment tools and leveraged cutting edge winter maintenance strategies. This saved another \$3 million in historical costs, which we will continue to redirect into improving more roads and bridges. As a result, Ada County still enjoys top

ACHD Director

engineering ratings on the vast majority of its 2,200-plus road miles and more than 700 bridges.

Of great interest and with approval from our customers, ACHD embarked on aggressive programs to install flashing yellow-arrow turn signals and raised reflective lane markers – both garnering huge public support. We will continue this effort in 2015! Additionally, ACHD designed, developed and implemented new strategies for heavy equipment operations assessments, which will continue to reduce daily operating costs as we now know exactly how much each vehicle costs to operate, per mile. Finally, we have implemented a compressed natural gas pilot program for a segment of our 410-vehicle fleet. Initial results show a 20 percent reduction in fuel costs. Combined, we are confident we are providing the right equipment for the right job with a continued lowered lifecycle cost to the taxpayer.

Commuteride, ACHD's alternative public transportation program, continued to set new standards of excellence and reached its 103th vanpool route in 2013. Overall, the program successfully serves more than 150 diverse employers and over 987 riders. Moreover, we removed over 13 million rider miles off of our roads, saved over 2.5 million gallons in gas, minimized impacts to our environment and reduced congestion on our roadways. Not bad for an idea that took root in 1977 with two borrowed vans from Sun Valley Transportation – off season.

Fully leveraging technology, ACHD continues our five-year journey to transform our information technology strategy to better serve our customers while increasing efficiencies and reducing costs to the taxpayer. New processes that reduce paper, increase transparency, and increase team operations by utilizing “smart vehicle technologies,” and better information systems to reduce employee time on record keeping, documentation, and file generation, are paying big dividends in the second year of our enterprise. Moreover, ACHD published and executed our first ever, Integrated Five-Year Work Plan effectively merging all traffic, maintenance, and capital projects under one umbrella. We are confident that we will not only attain better operational efficiency but also be able to accomplish more while reducing the traffic impacts to the public.

ACHD embraced new perspectives on growing partnerships geared at providing the foundation for economic development in Ada County. Following the Commission's 2012 decision to establish a single, countywide impact fee structure replacing our four-zone fee structure, which simplified the development process while also reducing

ACHD Director

rates for commercial and residential construction – we see continued growth in both residential and commercial construction starts, greatly enhancing Ada County's competitive edge. Moreover, ACHD's focus on building partnerships with Ada County business has also been credited for helping bring to reality such enterprises as Boise's Zion's Bank headquarters in Idaho, Boise's new Trader Joe's and Jack's Urban Meeting Place, the Village at Meridian development, the Gardner Company's City Center Plaza, and Garden City's 36th Street Project - just to name a few.

Our consistent focus on safety and training has not only raised the bar for our planning and execution, but has also paid huge dividends to the taxpayers. For example, we have reduced accident and injury rates by over 50 percent. This dramatically reduced lost work hours and health claims, saving more than \$400,000. As the crowning touch to our efforts, ACHD's health insurance costs DID NOT increase for 2014, a marked savings to the taxpayer. Safety and training does pay great dividends.

Finally, we continue to focus on customer satisfaction and I am pleased to report that we have averaged a 90 percent-plus on solving customer concerns within one week of notification. Additionally, our maintenance team has maintained their pot hole fix rate at less than 24 hours after notification. Moreover, for the fifth year running, ACHD was given the Government Finance Officers Association's Award for Excellence in budgetary practices. It just does not get much better than this!

As we now move into 2014, ACHD will continue to pursue every opportunity to increase effectiveness, reduce costs to the taxpayer and improve our customer focus. Although we, as all highway districts, face increasing, tough unfunded federal mandates for environmental compliance for roadway drainage and other regulatory costs, we are confident we will continue to provide our customers with the best road and bridge transportation system in Idaho for the most competitive cost.

Our people

Our competitive edge in the work place is the source of our strength.



Maximize training

With a renewed focus on training, ACHD staff participated in several internal and external trainings. The instruction ranged from bicycle and pedestrian facility design, to bridge inspection and leadership training. Opportunities also included regular leadership and all staff meetings with the Director.

Winter Maintenance

The winter maintenance crew used a snow plow simulator to refresh their winter driving and plowing skills before the snow season. The state-of-the-art technology reproduced winter road conditions and allowed

operators to test their skills on a variety of winter scenarios.

Invest in our people

Filling Positions

In an effort to continue offering excellent customer service to the public, ACHD added staff to help with the increasing workload. In 2013 seventy-four positions were filled.

Wellness Program

ACHD's wellness program continued to grow in 2013. On average, fifty employees participated in the Idaho Athletic Club gym membership program and many others took advantage of the Lunch and Learn seminars and evening exercise classes.

Reward innovation, commitment to the mission and excellence across the board

Innovation Awards

ACHD presented three innovation awards to

commendable employees. The awards recognized individuals for their solutions to everyday issues ranging from a safety grip for the paint stripers to a tool to help clean under bridges.

Quarterly Awards

The tradition of honoring employees every quarter for their leadership, hard work and service to the community continued in 2013. This year the program was expanded to include employee teams that were recognized for completing special projects.

Chipseal Awards

Recognizing individuals for their role in a successful chipsealing season has become an important tradition at ACHD. Thirteen employees were honored in September for their part in the summer maintenance program.





2013 AWARDS

Bicycle Friendly Business Award, Silver Level
League of American Bicyclists

Distinguished Budget Presentation Award
The Government Finance Officers Association

**Excellence in Transportation Award:
Transportation Planning**
Kuna Downtown Corridor Plan
Idaho Transportation Department

**Grow Smart Award: Smart Growth and
Transportation**
Whitewater Park Boulevard/30th Street Extension Project
Idaho Smart Growth

Leadership in Community Health Award
Developing the county's bicycle infrastructure
Central District Health Department

Outstanding Plan Award of Merit
Kuna Downtown Corridor Plan
The Idaho Chapter of the American Planners Association

Effective & Efficient Execution

Excellence in service and performance



Effective & Efficient Execution

Teamwork



Downtown Boise Implementation Plan

ACHD and Boise City, in cooperation with Capital City Development Corporation, Downtown Boise Association and Valley Regional Transit, developed the **Downtown Boise Implementation Plan** to establish a strategy to coordinate major roadway improvements that are proposed, planned or requested in the downtown area. The agency coordination, stakeholder, and public input resulted in an implementation guide identifying the exact work to be done and when.

The plan was adopted by the ACHD Commission in September and the first phase of projects will begin in 2014.

Capitol Boulevard Bridge Repainting

In partnership with the City of Boise, ACHD re-painted the **Capitol Boulevard Bridge** its original 1930's color, Ivory Lace (an off-white shade) and added lights similar to those originally constructed on the bridge some four-decades ago.

The six-month project was completed in October 2013.

Advisory Committees

ACHD works with several advisory committees to shape Ada County's transportation infrastructure: Capital Investment Citizens Advisory Committee, Bicycle Advisory Committee, Americans with Disabilities Act Advisory Committee.

Each group provides direction regarding their area of interest.

2014 Budget

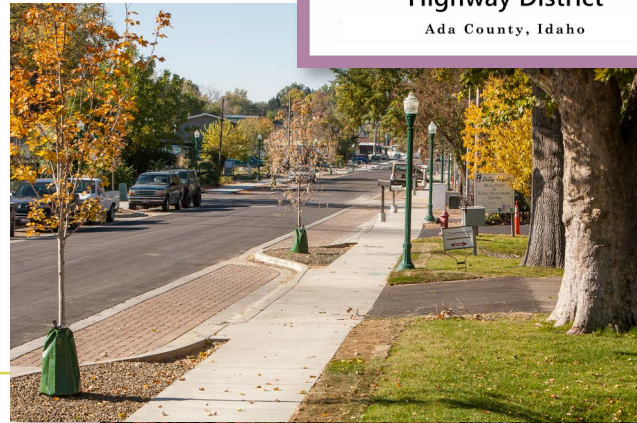
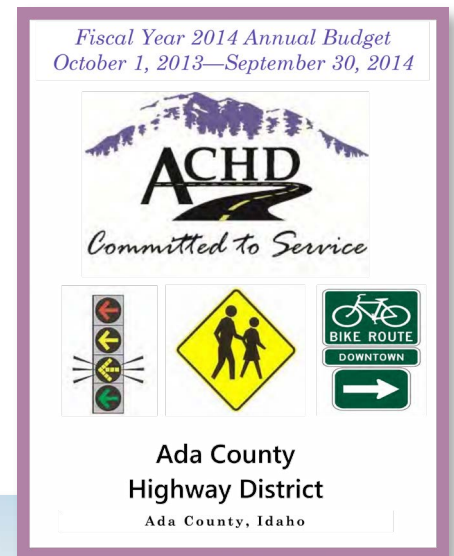
The Commission approved the 2014 budget, a \$93.3 million endeavor, at the end of August.

Major projects in the budget included:

- *Community Programs* - \$7 million to construct sidewalk, pedestrian crossing, bikeway and safe-route-to-school projects across the county to improve mobility and safety.
- *Ustick Road and Locust Grove Road* - \$760,000 to widen intersection to five lanes on all approaches and modify signal in order to improve traffic flow and safety.
- *Ustick Road, Locust Grove Road to Leslie Way* - \$1,850,000 to widen the roadway to five lanes with curbs, gutters, sidewalks and bike lanes to relieve traffic congestion and improve safety for all users; project concurrent with the Ustick Road and Locust Grove Road intersection project.

Developer Cooperatives

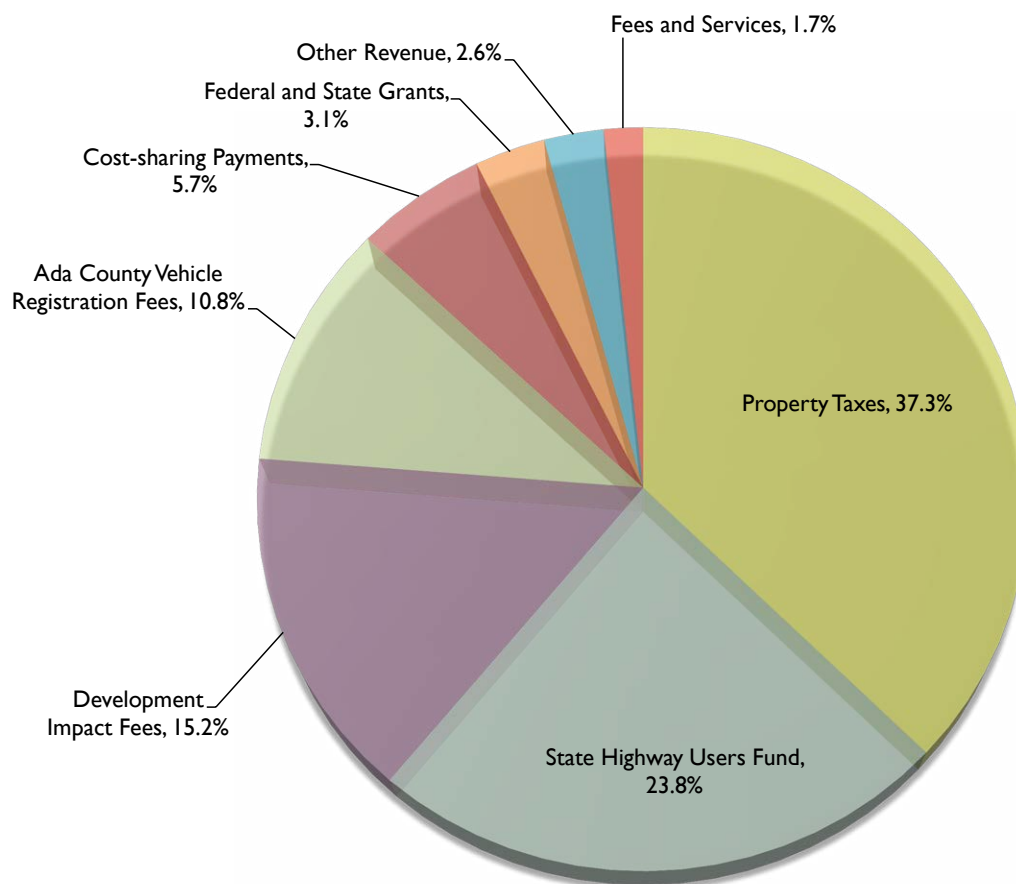
ACHD participated in two developer cooperatives in 2013. Victory Road between State Highway 69 and Glacier Bay was widened to three lanes with curb, gutter, sidewalk and bike lanes. Victory Road between Eagle Road and Bay Star Way was widened to include an additional travel lane, curb, gutter, and sidewalk. These partnerships routinely save the District hundreds of thousands of dollars each year.



Effective & Efficient Execution

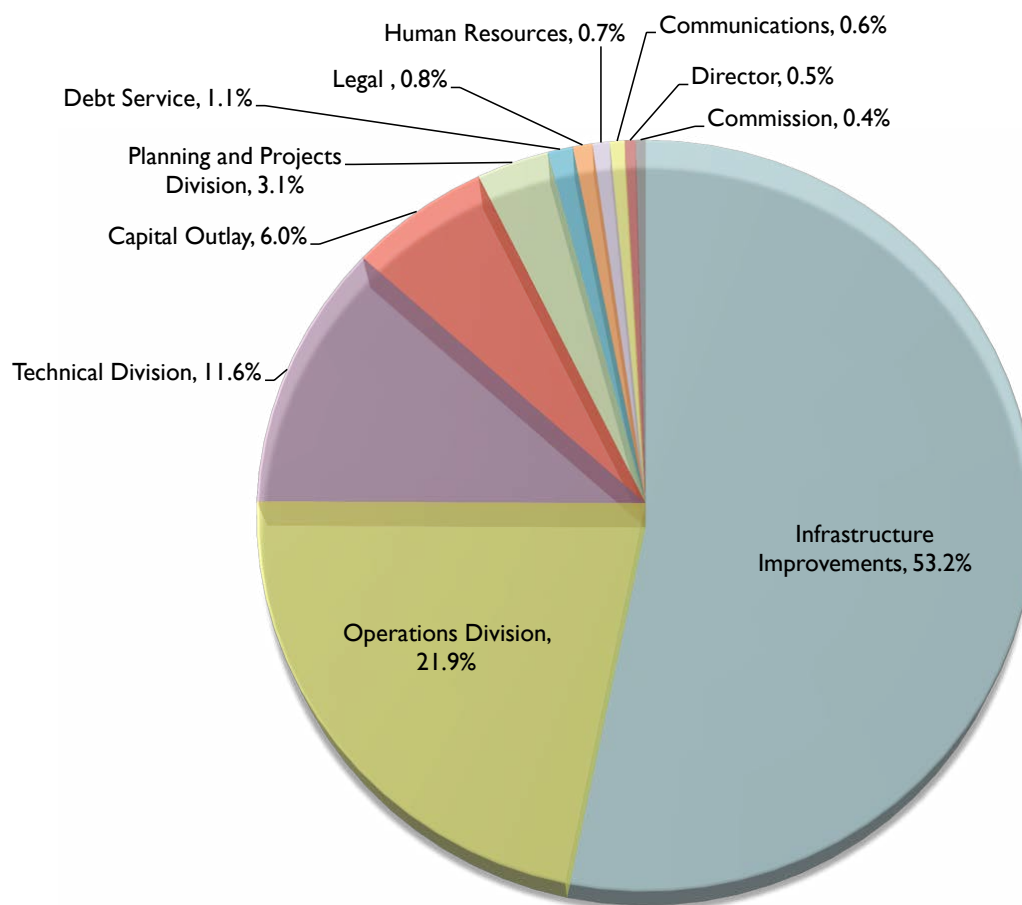
Fiscal responsibility in expending taxpayer dollars

Revenues



Property Taxes	32,011,303
State Highway Users Fund	20,449,720
Development Impact Fees	13,041,596
Ada County Vehicle Registration Fees	9,236,610
Cost-sharing Payments	4,874,698
Federal and State Grants	2,624,206
Other Revenue	2,215,315
Fees and Services	1,450,760
State Sales Tax	1,422,089
Total	85,904,208

Expenditures



Infrastructure Improvements	48,212,269
Operations Division	19,803,427
Technical Division	10,494,502
Capital Outlay	5,474,463
Planning and Projects Division	2,811,996
Debt Service	982,362
Legal	765,446
Human Resources	668,212
Communications	572,332
Director	418,396
Commission	386,633
Total	90,590,038

Shamrock Bikeway

ACHD and the City of Boise developed a proposal to create a north/south bikeway along the Shamrock Avenue Corridor. Originally called for in the 2009 Bicycle Master Plan, the bikeway will provide a safe connection between Five Mile and Cloverdale roads for bicyclists traveling between DeMeyer Park to the north and President Drive to the south. The bikeway will be distinguished by sharrows, wayfinding signs, and signalized pedestrian/bicycle crossings at Fairview Avenue, Ustick Road and McMillan Road.



ACHD Neighborhood Walking and Biking Plans

ACHD and the City of Boise completed the second series of neighborhood level pedestrian plans in 2013, focusing on the Southeast Boise and the Boise West Bench neighborhood areas.

ACHD and the City directly engaged the public to determine how to enhance pedestrian and bicyclist connectivity at the neighborhood level. With the public's help agencies were able to identify areas where sidewalk and bike improvements would help increase connectivity.

Kuna Crossing Study

ACHD and the City of Kuna began work on the Kuna Crossing Feasibility and Implementation Plan this summer. The goal of the plan is to identify the need, location and feasibility of crossing the Union Pacific railroad tracks and Indian Creek. In February 2014 the ACHD Commission adopted the plan with Option 7A: Swan Falls to Linder Road as the preferred option.



Garden City Livable Streets Plan

ACHD and Garden City began developing the Garden City Livable Streets Plan in the spring to establish a strategy to guide and coordinate future development and transportation planning. The goal is to create appealing neighborhoods for residents and businesses with streets and facilities that support all modes of transportation - pedestrians, bicyclists, transit and motorists.

Effective & Efficient Execution

Responsiveness to regional and community needs



Effective & Efficient Execution

Customer service



Tellus

ACHD's Tellus e-mail continues to be a popular and easy way for the public to contact the District with concerns. ACHD received over a thousand inquiries through the e-mail address last year with questions ranging from signal timing and winter maintenance, to street sweeping and traffic calming requests.

ACHD Reporter

ACHD debuted a smart phone app, the ACHD Reporter in April. The app allows the public to report problems or issues on roadways in Ada County by taking a photo of the problem or sending in the location. Once ACHD receives the information action is taken to resolve the issue.

Field trips

ACHD hosted several field trips for local school children, showing them how traffic signals work, how street signs are made, and the use of different maintenance equipment.

This year maintenance crews also took the field trip on the road. They visited two local libraries during story time to read and show children the trucks and equipment ACHD crews work with everyday.

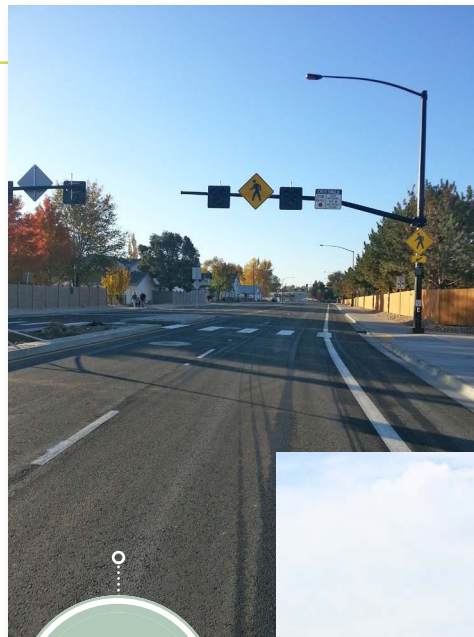


Economic Development Program

ACHD developed an Economic Development program in 2013 to allow for innovative transportation investment to address community transportation needs not related to safety or capacity. Qualifying projects are ones that normally would not be built through other ACHD programs, but provide a positive contribution to the transportation system and local economy, as well as establish partnerships to spur re-investment. For a list of scheduled projects click [here](#).

Economic Vitality

This fall ACHD dedicated three projects designed in part to meet economic vitality goals for the cities of Boise, Meridian and Garden City. The 36th Street, Chinden Boulevard to the Waterfront District project added curb, gutter, sidewalk, street trees and lighting in the heart of Garden City's Live/Work/Create District; The Meridian Split Corridor Project Phase 2 will help establish downtown Meridian as the center of the community; and the 30th Street Extension Project, now Whitewater Park Boulevard, integrated land-use and neighborhood revitalization with a new north-south connection between State Street and Fairview Avenue including curb, gutter, sidewalk, bike lanes and a roundabout.



Whitewater Park
Boulevard



36th Street

Meridian Split
Corridor
Phase II



Effective & Efficient Execution

The promotion of economic development within each community

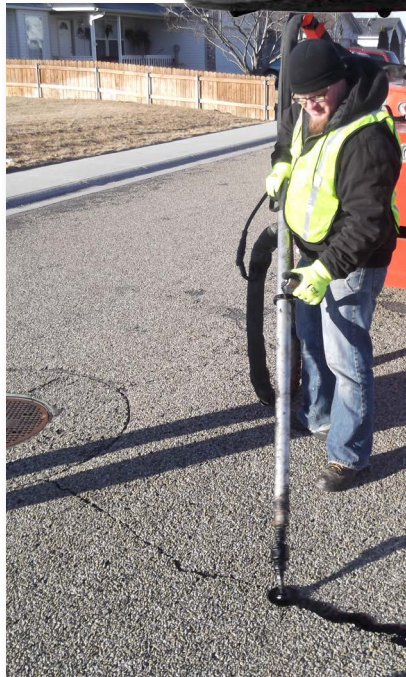
Evaluating pavement

It is important to ACHD to choose the most effective maintenance method for preserving Ada County's roadways. ACHD assesses streets every three to five years to determine the Pavement Conditions Index (PCI). This assessment rates the condition of the road which helps ACHD determine what type of treatment it needs to remain in good condition. Roadways that have a low PCI and larger volumes of traffic typically receive an overlay. Roadways with a better PCI and less traffic, such as residential streets, are normally chipsealed or cracksealed.

Cracksealing

ACHD crews cracksealed 721 miles of neighborhood roadways throughout the county in 2013. Cracksealing, used on streets that don't need a full chipseal, helps preserve roadways by slowing pavement deterioration.

Click [here](#) to learn more about ACHD's maintenance department.



Cleaning storm drains

ACHD owns and operates 575 miles of storm drain pipe that convey stormwater to local creeks, drains, canals, the Boise River and our groundwater. To keep this system working efficiently and properly, ACHD crews regularly clean the pipes, storm grates and other infrastructure.

Effective & Efficient Execution

The **preservation** of our multi-billion dollar infrastructure investment

Corridor preservation

In 2013 ACHD purchased 2.75 acres of land for future projects through corridor preservation. The right-of-way was purchased for several projects, including Deer Flat Road, Linder Road to State Highway 69 and Overland Road, Five Mile Road to Maple Grove Road.

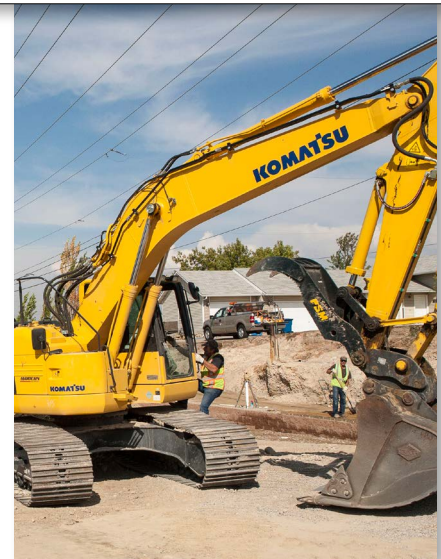
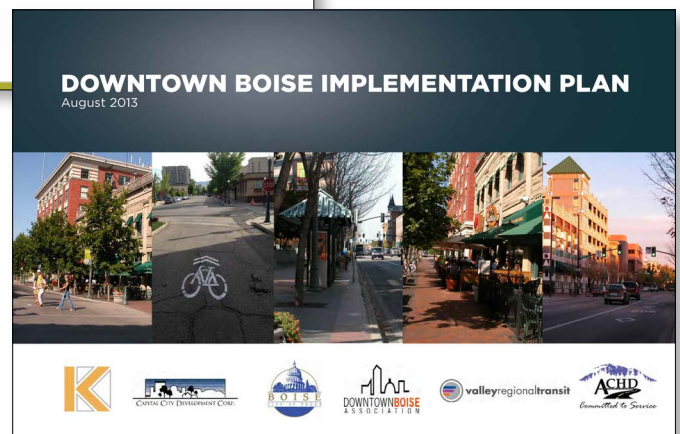
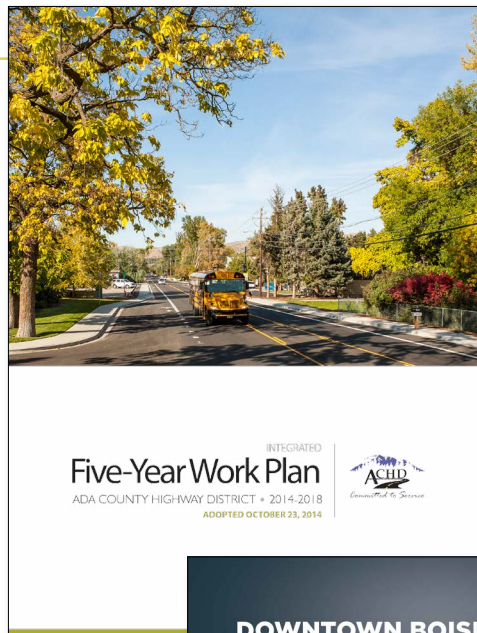
2014-2018 Integrated Five-Year Work Plan

ACHD adopted the 2014-2018 Integrated Five-Year Work Plan at the end of October 2013 with nearly \$611 million in building, maintenance and operations for 250 projects and programs. The new integrated plan goes beyond its traditional role of setting the concept, design, right-of-way acquisition and construction for all of ACHD's capital projects and includes construction and operations information in one source. The new document also provides for improved project coordination, a funding plan and an new Economic Development Program.

2013 Studies

Planning for growth requires coordination with local agencies and the public, and a holistic overview of the transportation network in a particular area. When completed, studies provide the framework for future projects. In 2013 ACHD worked on the following studies:

- Downtown Boise Implementation Plan
- Eagle Road and State Street Intersection Concept Study
- Garden City Livable Streets Plan
- Kuna Crossing Feasibility and Implementation Plan
- Northwest Foothills Transportation Study Update



Effective & Efficient Execution

Preparation for future growth

Leaders in technology, design, and innovation

Countywide Roundabout Preservation Plan

ACHD adopted its first Countywide Roundabout Preservation Plan in December 2012. The plan evaluated 785 intersections at a very high level for roundabout feasibility, identifying thirty-one percent of the intersections as likely candidates for roundabouts in the future. While the plan will allow ACHD to accurately preserve right-of-way for future intersection improvements and project planning, the ultimate intersection configuration will be determined through the design process.

Three Cities Intelligent Transportation System (ITS) Project

ACHD, in partnership with the Idaho Transportation Department (ITD), is installing Adaptive Signal Control Technology (ASCT) and additional ITS features to improve the traffic flow on Eagle Road (SH 55), State Street (SH 44), Glenwood Street (SH 44), and Chinden Boulevard (US 20/26). Based on conditions, the system will automatically adjust the signal timing to best accommodate ever changing traffic patterns and ease traffic congestion and improve traffic efficiency.

Stormwater: Green Infrastructure

ACHD has been actively exploring green infrastructure as a natural and effective tool for managing water drainage from Ada County's roadways. Instead of piping and treating stormwater in a centralized storm drain pond, the water quality and volume is managed through landscape features. Green infrastructure is cost effective, mimics natural conditions, improves water quality, and provides enhanced neighborhood beauty.

ACHD is experimenting with bioswales and native plants, and recently completed a project on 36th Street in Garden City with permeable pavers.



Winter Maintenance

For the past two years ACHD has been using winter weather monitoring tools to more accurately predict and treat winter roadway conditions. With seven weather information stations located around the county ACHD is able to measure and track important elements that impact the safety of motorists' commute: surface friction, air and surface temperatures, ice presence and moisture.

The information helps ACHD ensure a quicker response time to trouble areas, as well as keep track of materials usage. This leads to increased safety for drivers and more efficient use of taxpayer resources.



Lights for bicyclists

ACHD recently expanded the safety blinker program to bicyclists. The two special safety lights securely attach to the front and rear of a bicycle, making cyclists easier to see. ACHD gave the lights to all the police departments, in Ada County, as well as several bicycling advocacy groups. One of those groups, the Boise Bicycle Project, will give away a set of lights with every bike given away.



Safety Policies and Procedures

The Highway District developed a new employee safety handbook that outlines ACHD's safety policies and procedures. The new book covers a more detailed safety program, and security conditions, hazard communications, vehicle use policy and red air quality alerts.

Winter maintenance

ACHD crews led an aggressive effort on Ada County's roadways this winter. The season was a particularly challenging month with colder than normal temperatures and significant snowfall and ice for this area. Crews used almost five times more deicer and fifteen times more sand than normal in an effort to keep Ada County's roadways safe for motorists. Click [here](#) to learn more about ACHD's winter maintenance practices.



Safety blinkers

Safety blinkers continue to be a popular item in the community. Not only does ACHD give them away to community groups who request them, but the District also hosted a Halloween Safety Stop on Harrison Boulevard to hand them out. The popular event drew hundreds of children as they trick-or-treated around the neighborhood and staff gave out approximately 2,500 blinkers.

Safety throughout the District for its employees and citizens