



## 2010 ANNUAL REPORT

ADA COUNTY HIGHWAY DISTRICT



## TABLE OF CONTENTS

# 2

Commission Message

# 3

Director's Message

# 4

Guiding Principles

# 20

ACHD Facts

# 22

Revenues & Expenditures

# 23

Contact Information

# 24

Service Standards

2010 Mission & Guiding Principles

# Commission Message

A busy construction year in Ada County brought new miles of safer, better-quality roads and sidewalks. More than \$13 million in federal stimulus funds allowed the Ada County Highway District (ACHD) to make significant progress on its inventory of roads needing maintenance. Overlay work was the most prevalent, with 52 miles of road receiving a new layer of asphalt and fresh lane lines—a noticeable increase from our average of 30 miles per year.

With a list of projects designed and ready to break ground, ACHD secured nearly \$2 million in federal stimulus funds to make dramatic improvements to sidewalks and pedestrian ramps, increasing accessibility for all sidewalk users. More than 1,000 intersection corners were outfitted with new ramps and truncated domes or in some cases, both. In a non-stimulus year, 100 to 200 corners generally receive such upgrades. Many of these improvements were focused within northern Ada County where sidewalks, some more than 100 years old, were brought to Americans with Disabilities Act (ADA) standards.

Twenty-one sidewalk and pathway projects enhanced safety for school kids and pedestrians of all ages, expanding the connectivity of Ada County's sidewalk network. Many of these projects were constructed near schools and in areas where sidewalk did not exist.

Decreasing congestion and planning for future growth were behind the Ten Mile Road from Franklin Road to Cherry Lane widening project. Funded in part through Vehicle Registration Fees, Ten Mile was expanded to five lanes between Franklin and Cherry, including the intersection at Ten Mile and Franklin. A signalized pedestrian crossing, sidewalks and bike lanes made the area safer for school children and residents.

Looking ahead, we will continue to work diligently, utilizing tax dollars where they will

do the most good—reducing congestion and making your commute safer. Here are some of the 2011 highlights:

- The intersection of State Highway 44/State Street/Ballantyne Lane will be realigned, creating a new intersection on State Highway 44 west of the current intersection, which will greatly enhance safety. A traffic signal and sidewalks are also planned.
- Intersection reconstruction projects at McMillan Road and Locust Grove Road, and Franklin Road and Cloverdale Road will reduce wait times for motorists and improve connectivity and safety for pedestrians.
- Several signalized pedestrian crossings and sidewalk projects will also be constructed, enhancing safety and mobility for the non-motoring public.

Individual intersection, sidewalk and maintenance projects seldom make front-page news or cause hearts to race. But the projects mentioned above, and many others completed in 2010, increase mobility and add to a community's livability. We look forward to moving Ada County further ahead in 2011.

## 2010 Board of Commissioners



*Sherry R. Huber,  
President*



*Rebecca W. Arnold,  
Vice President*



*John S. Franden,  
Commissioner*



*Carol A. McKee,  
Commissioner*



*Sara M. Baker,  
Commissioner*

# Director's Message

When you read this I will have retired from the Ada County Highway District after a little over 14 years, 11 of those years as Director. I've reflected on my service and there are several highlights that rise to the top:

- ACHD's customer service program implemented in 2003 continues to be an integral cornerstone to the "Committed to Service" philosophy and accounts for 40 percent of each employee's annual review.
- We initiated the Blueprint for Good Growth, a long-range land-use and transportation plan for Ada County in 2004.
- In 2006 we began a reorganization that implemented a new project delivery process based on early public involvement and problem solving several years in advance of construction. The highly praised \$21 million East ParkCenter Bridge and the \$3 million Meridian Split Corridor, Phase I were two of the first large projects completed under the process.
- We invited the Urban Land Institute (ULI) in 2007 to review ACHD's role and future as a countywide transportation agency. The ULI concluded that ACHD works well, is efficient and "is the best way to deliver service."
- In 2005 we performed the only comprehensive efficiency audits for all aspects of ACHD's operations.
- Fiscal efficiency has always been important to me. Over the past 10 years the taxpayers have provided ACHD with over \$750 million in revenue and more than \$500 million of that directly led to new transportation infrastructure. This means that over the past decade, nearly 70 cents of every taxpayer dollar was spent on physical improvements and the remaining 30 cents went into maintaining and operating the existing

road network. Those are pretty remarkable numbers when you consider that many government organizations spend in excess of 50 percent of their revenue in operational costs and far less than 50 percent for infrastructure.

One of the brightest moments was the passage of the renewed and expanded Vehicle Registration Fees in 2008. The measure – which targeted enhancements in school safety, bicycling and pedestrian facilities and congestion relief – received a 67 percent voter approval when only 50 percent was needed.

It has been my privilege to serve Ada County's taxpayers and to implement ACHD's mission. Most importantly, I am especially thankful for the District's employees. Their hard work and dedication leave me confident that ACHD will continue to move forward successfully.

## 2010 Director



*J. Schweitzer, Director*





## GUIDING PRINCIPLE 1

Progressively maintain, improve,  
design and build a high-quality  
highway system through systematic  
and innovative practices

## WIDER SHOULDERS

After a chipseal or overlay ACHD changed the striping layout on some roadways to increase the width of the shoulders. Selected roadways weren't wide enough for full-width bike lanes, but the restriping made the shoulders wider. Wider shoulders increase safety for all users of the roadway.



## TRAFFIC SIGNS

Traffic signs are required to meet certain guidelines for reflectivity to optimize visibility at night. ACHD began tracking the reflectivity of signs to learn how long signs meet the standards. With this program in place ACHD will have a better idea of when signs in the field need to be replaced with new ones.



## LEFT TURNS

ACHD installed safer, more efficient flashing yellow left-turn arrow signals at left turn lanes at nine intersections. The new signals have a flashing yellow arrow instead of the green ball to tell drivers that they can turn left after yielding to on-coming traffic. Research has shown that the new signals reduce accidents and are more easily understood by drivers.



## GUIDING PRINCIPLE 2

Lead in all areas of safety



## COMMUNITY PROJECTS

ACHD worked on 28 community projects in fiscal year 2010. The projects ranged from curb, gutter and sidewalk improvements to asphalt pathways and pedestrian signals. Many projects provided safe routes for children walking to school and others increased safety for pedestrians and improved neighborhood connectivity.

**ACHD, working with the cities of Boise and Meridian, worked on developing an access management plan for Fairview Avenue between Orchard Street and Linder Road. Medians, a large component of the plan, would increase safety along the corridor.**



## PED SIGNALS

ACHD replaced over 1,000 traditional pedestrian signals with signals that have a countdown. The new pedestrian signals, paid for by Vehicle Registration Fee funds and stimulus dollars, let pedestrians know the amount of time they have to get across a street.

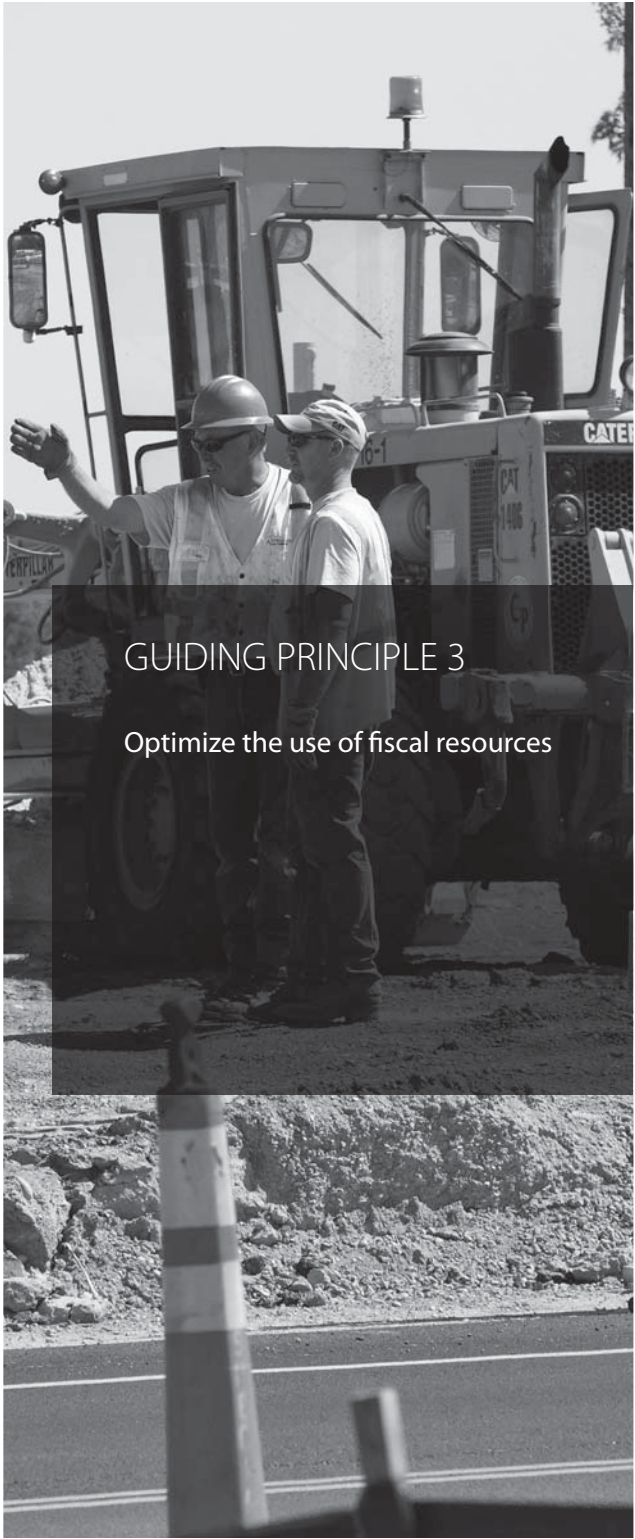
## HAWK PEDESTRIAN BEACON

ACHD installed more HAWK (High-intensity Activated crossWalk) pedestrian beacons around the county, bringing the total in 2010 to nine. The following school zones received the beacons:

- Horizon Elementary
- Maple Grove Elementary
- Sienna Middle School
- Mountain View High School







## GUIDING PRINCIPLE 3

Optimize the use of fiscal resources

**The fiscal 2010-2011 budget was tailored to avoid an increase in the overall amount of tax revenue collected from Ada County property owners. This was the second year in a row that ACHD did not seek an increase in revenue.**



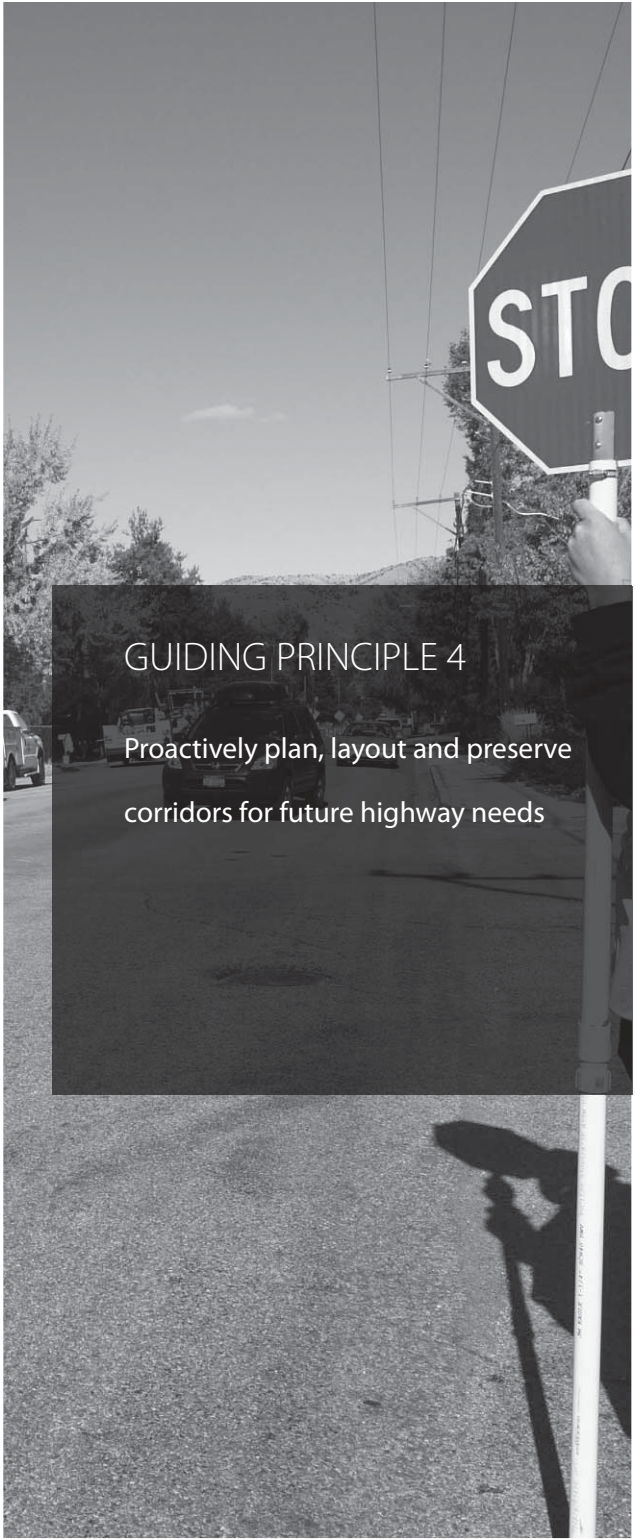
## NEW CROSSWALK DESIGN

ACHD implemented a modified crosswalk design that uses a large bar striping pattern and places the marking material strategically outside of the wheel tracks. The newly designed crosswalks don't wear out as fast which saves the District time and money.



## DEVELOPER COOPERATIVES

Developer cooperatives allow the Highway District to partner with developers to share the cost of roadway improvements. Not only does this make sense financially with ACHD saving on right-of-way and construction costs, but projects also get constructed earlier. The Overland Road, Ten Mile to Linder, Phase 2 project was completed in December.



## GUIDING PRINCIPLE 4

Proactively plan, layout and preserve  
corridors for future highway needs



## STUDIES

ACHD partnered with Valley Regional Transit and other government entities to identify and prioritize specific transit and traffic improvements for State Street between downtown Boise and State Highway 16.

The Airport and Overland Road Study, a partnership between ACHD, the cities of Nampa and Meridian, and the Nampa Highway District #1, will determine a future east-west alignment between the Nampa Airport and the Garrity Interchange on the west to Ten Mile Road near Overland Road on the east.

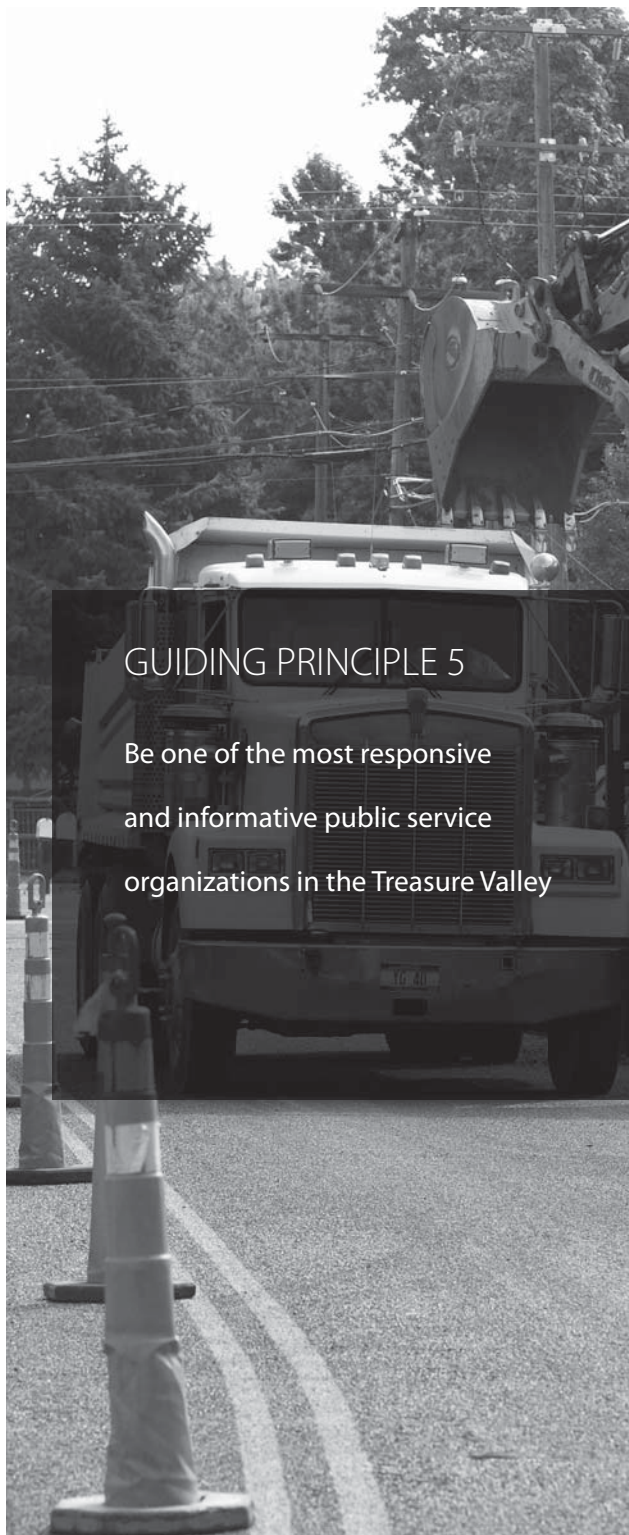


## PRESERVE

When a road is expanded, ACHD purchases the land necessary for the project. When possible, ACHD will purchase the land several years before construction to take advantage of current prices. In 2010 ACHD purchased 13.6 acres for \$624,700.

**The Five-Year Work Plan is the Highway District's detailed outline of projects that ACHD intends to build in coming years. The 2011-2015 edition included 250 projects.**





## GUIDING PRINCIPLE 5

Be one of the most responsive  
and informative public service  
organizations in the Treasure Valley



## COMMISSION MEETINGS ONLINE

Recognizing citizens' busy schedules, ACHD began offering Commission meetings on its web site. Each week, Commission meetings are streamed live and citizens can view past meetings as well at [www.achdidaho.org](http://www.achdidaho.org).



## SIMPLIFIED WEB ADDRESS

ACHD simplified its web domain to [www.achdidaho.org](http://www.achdidaho.org), to make it more user friendly for citizens accessing information online. Employee e-mail addresses were also streamlined, allowing the public to more easily reach ACHD staff.

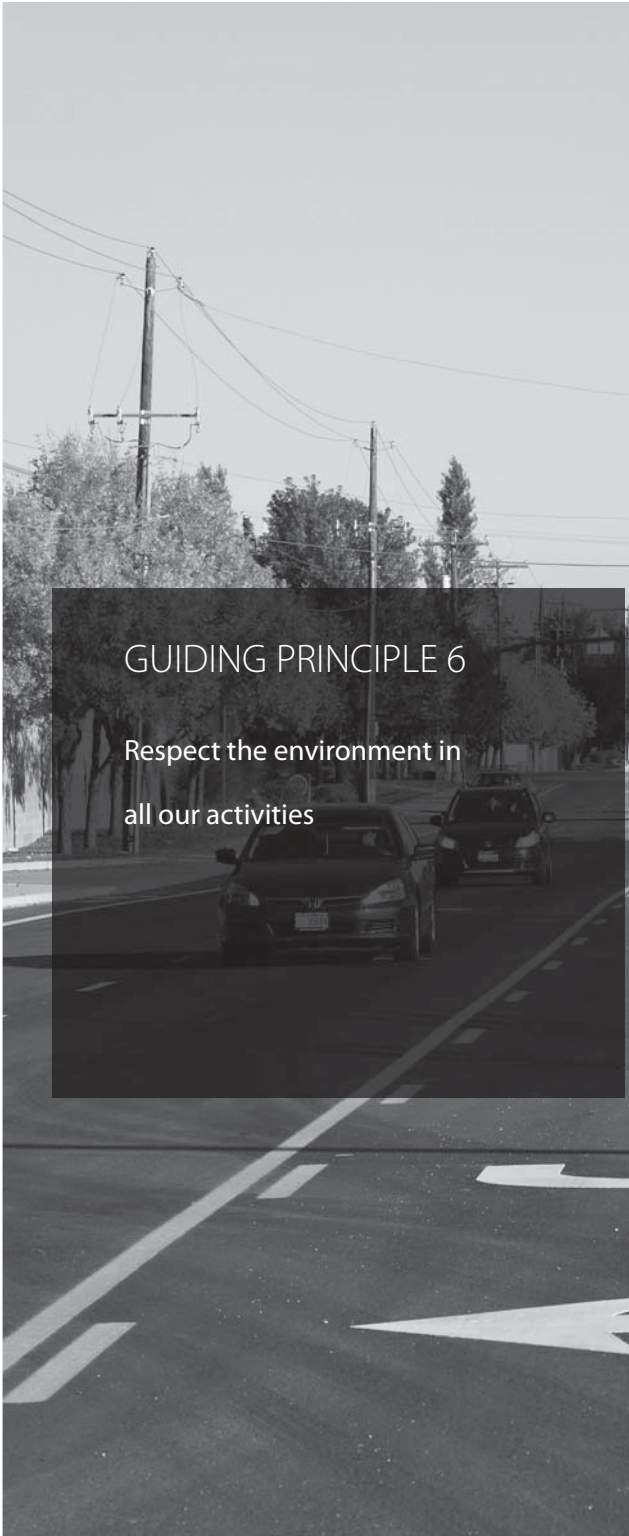


## E-MAILS

ACHD staff responded to nearly 1,000 e-mails from citizens through its [tellus@achdidaho.org](mailto:tellus@achdidaho.org) e-mail address.

Subjects ranged from requests for street sweeping to inquiries that often led to in-depth traffic studies.

E-mailing "Tellus" has become an easy way for the public to get questions about Ada County roadways answered.



## GUIDING PRINCIPLE 6

Respect the environment in  
all our activities

**Over 850 commuters  
hopped on ACHD  
Commuteride vans in  
2010, taking more than  
13.5 million vehicle miles  
off of the roads and  
reducing air pollution  
through reduced gas  
consumption.**



## SIGNAL TIMING

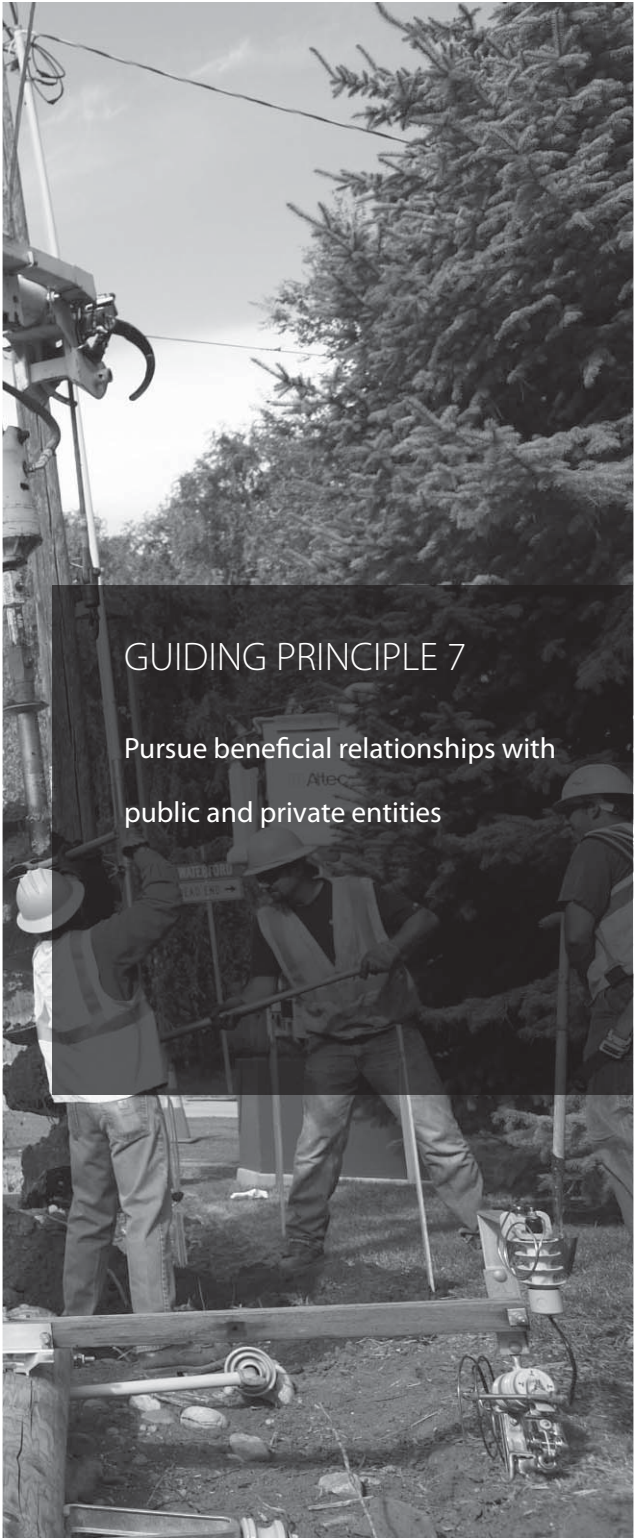
New traffic signal timing plans were implemented on two major Ada County corridors. Traffic signals along State Street and Federal Way were studied, then, retimed, reducing traveler delay by 22% and saving 115,000 gallons of fuel each year.



## BICYCLE FRIENDLY

A strong and ongoing commitment to safety, education and increased infrastructure helped Ada County sustain its status as a "Bicycle Friendly Community." ACHD earned the "Bronze" level award, issued by the Bicycle Friendly America Project for the League of American Bicyclists.





## GUIDING PRINCIPLE 7

Pursue beneficial relationships with  
public and private entities



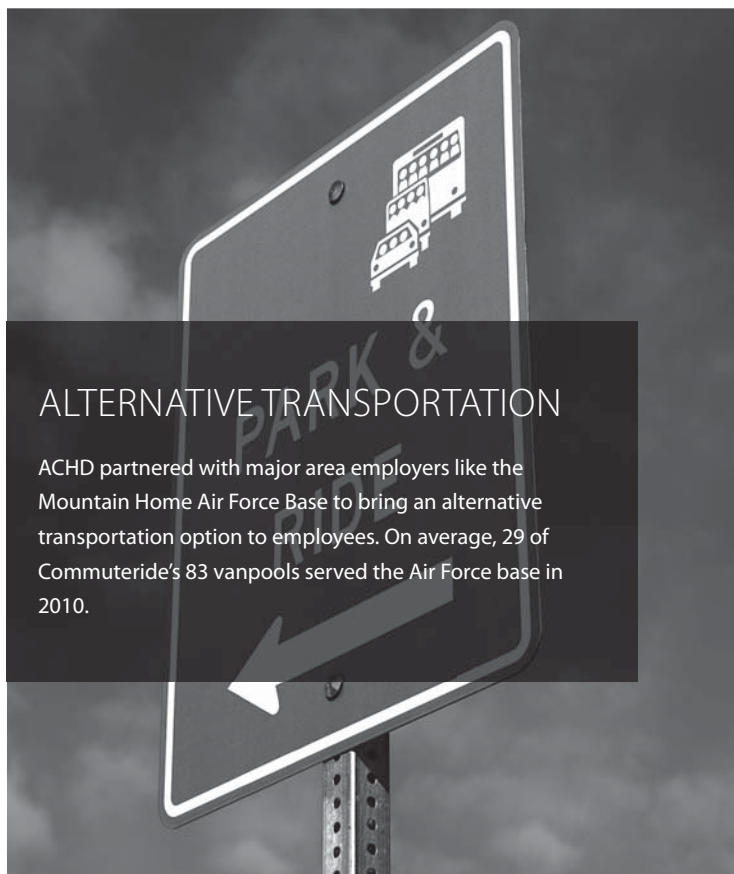
## ART & TRAFFIC

Plain-looking traffic controller boxes were turned into works of art in downtown Boise. The City of Boise, the Downtown Business Association, Capitol City Development Corporation and ACHD brought artistic designs to 13 intersection traffic controller boxes. Local artists created the artwork and grant money from the City of Boise funded the materials.



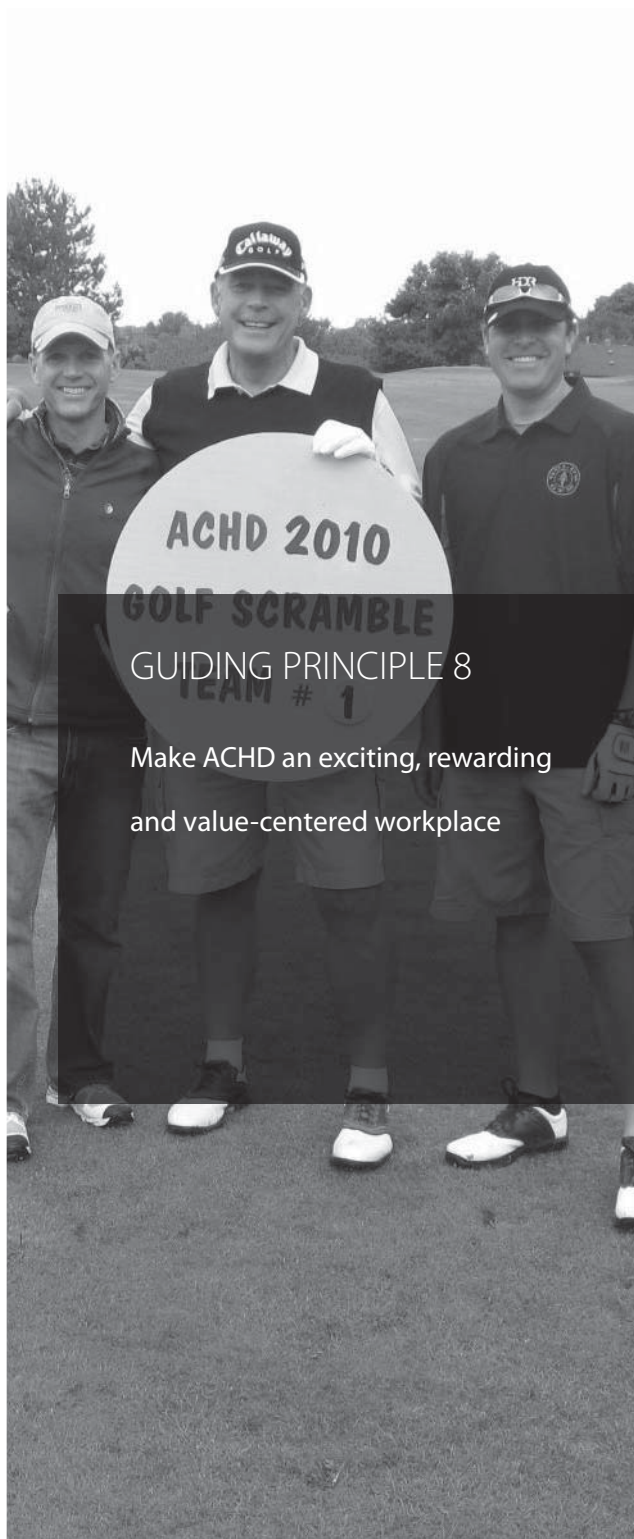
## WESTERN HERITAGE BYWAY PROJECT

Wider shoulders and a safer viewing area for tourists resulted from a project that improved a three-mile section of the scenic Swan Falls Road south of Kuna. Together, ACHD, the Scenic Byway Committee and the Idaho Transportation Department made the Western Heritage Byway Project a reality.



## ALTERNATIVE TRANSPORTATION

ACHD partnered with major area employers like the Mountain Home Air Force Base to bring an alternative transportation option to employees. On average, 29 of Commuteride's 83 vanpools served the Air Force base in 2010.



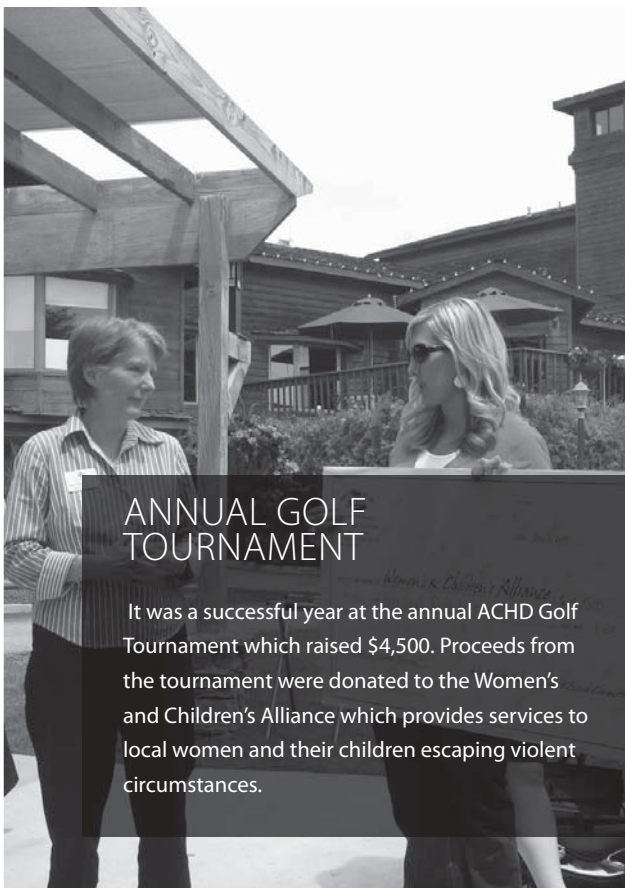
**GUIDING PRINCIPLE 8**

**Make ACHD an exciting, rewarding  
and value-centered workplace**



## CHARITABLE GIVING

Employees looking to give back to the community during the holiday season were given four different ways to do so. Employees donated cold weather clothing to children, eye glasses to the Lions Club, non-perishable food items to the Idaho Food Bank and made monetary donations to the United Way.



## ANNUAL GOLF TOURNAMENT

It was a successful year at the annual ACHD Golf Tournament which raised \$4,500. Proceeds from the tournament were donated to the Women's and Children's Alliance which provides services to local women and their children escaping violent circumstances.

**A Veteran's Day lunch was held in November to honor the more than 40 veterans employed with ACHD. Veterans were treated to a Thanksgiving-style meal and were recognized for their invaluable service.**

## SAINT ALPHONSUS INSIDE RIDE

A team of ACHD cycling enthusiasts cruised 96 miles of "road" at the Inside Ride; an indoor charity bike ride that supports Saint Alphonsus cardiac health services and promotes Heart Month.







## ACHD FACTS

### ADOPT-A-HIGHWAY

Participating groups • 94 | Clean-up events • 64 | Miles in the program • 238 miles | Debris collected • 14,220 lbs.

### BROOM CREW

Lane miles swept • 58,524 miles | Debris collected • 37,654 cubic yards

### COMMUTERIDE

Vanpool routes • 83 | Miles traveled • 1,483,750 miles | Miles saved • 13.5 million miles | Average number of vanpool riders per month • 858

### CONGESTION MANAGEMENT *(total number controlled by ACHD)*

Closed circuit TVs • 80 | Dynamic message signs • 7

### DRAINAGE CREW

Storm drains cleaned • 70,492 linear feet | Catch basins cleaned • 8,197 | Grates cleaned • 132 | Sediment tanks cleaned • 1,925

### GRADE CREW

Miles chipsealed • 271 miles | Miles scrubcoated • 19 miles | Grading non-paved roads/alleys • 200 miles | Potholes filled • 14,999

### IMPACT FEES

Certificates collected • 1,649 | Revenue • \$6,179,212 | Expenditures (impact fees and tax dollars) • \$9,367,357

### MISCELLANEOUS CONSTRUCTION

Construction permits issued • 3,151 | Construction permit revenue • \$405,096  
Construction contracts awarded • \$26.7 million | Pavement overlays of arterials and collectors • 6 projects/52 miles | Subdivisions inspected • 47

### RIGHT-OF-WAY AND DEVELOPMENT

Individual development applications • 610 | Miles of new dedicated public streets\* • 5.4 miles | Right-of-way acquisitions (number of parcels) • 147  
Right-of-way acquisition costs • \$4,197,332 | New subdivision plats • 36 | New residential lots • 550 | New non-residential lots • 110

*\*total reflects number of final plats signed and includes unopened right-of-way*

ROADWAY INFRASTRUCTURE

Total public road and street inventory in Ada County • 2,321 miles | Roads and streets under ACHD's jurisdiction • 2,199 miles | New roads and streets built and added to the ACHD system • 13 miles | Total bridges in Ada County\* • 714  
Number of bridges improved • 3

SHERIFF LABOR DETAIL PROGRAM

Alley blocks cleaned • 937, debris cleared • 91 bags, debris recycled • 566 cubic yards | Sidewalks cleaned • 64 lane miles, debris cleared • 584 bags, debris recycled • 125 cubic yards | Right-of-way cleaned • 29 lane miles, debris cleared • 1,130 bags, debris recycled • 594 cubic yards Hours worked • 26,694

SIGNALS (total number of)

School flashing beacons • 188 | Pedestrian signals • 25 | Traffic signals • 404 | Fire station signals • 17 | In-pavement flasher locations • 11

SIGNS

New street name signs: subdivisions • 17, replacements • 120 | Public meeting signs • 59 | Special installations • 604

STRIPING & MARKINGS

Crosswalks painted • 1,206 | Stop bars painted • 2,786 | Legends painted • 567  
Arrows painted • 2,136 | Lane miles striped\*\* • 1,646 miles

TRAFFIC COUNTS

With tube counters • 930 | Turn counts • 235 | Pedestrian and bike counts • 43 | Radar studies • 30

UTILITY CREWS

Sidewalk replaced/repaired • 5,676 ft. | Curb replaced/repaired • 3,441 ft. | Grates cleaned • 1,652 | Storm drains installed and/or repaired • 106

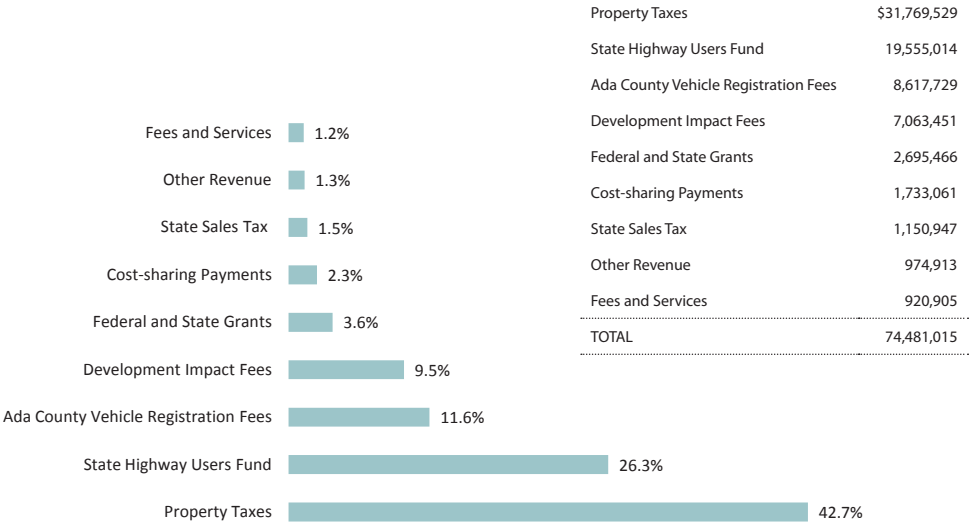
WINTER MAINTENANCE

Magnesium chloride • 350,343 gal. | Salt • 237 tons  
Sand/salt mix • 4,851 cubic yards

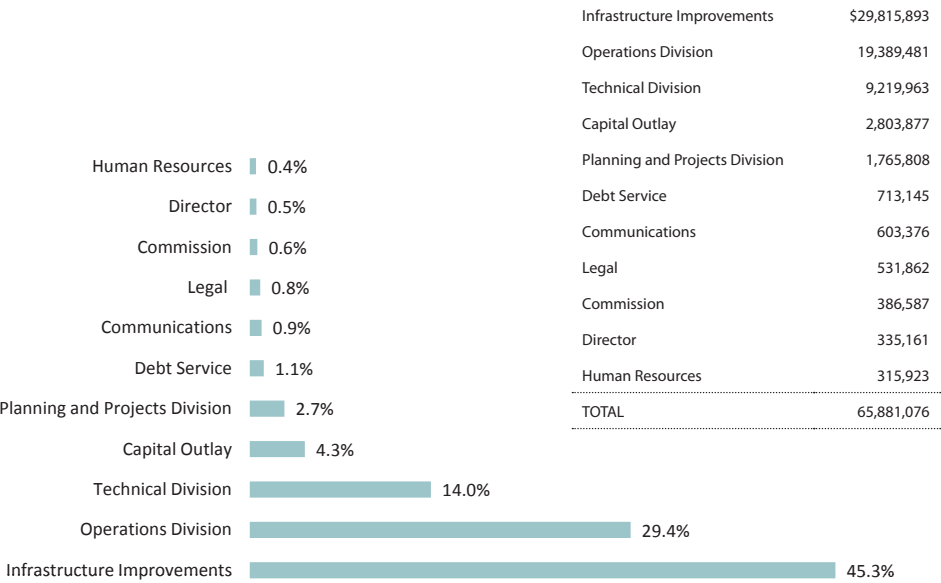
\*does not include structures under 5 feet

\*\*striping lane miles equals the number of striped lines on a one mile stretch of roadway

# REVENUE



# EXPENDITURES





# CONTACT INFORMATION

## OFFICE HOURS

8 a.m. to 4:30 p.m. | Monday thru Friday

## CONTACT INFORMATION

3775 Adams Street | Garden City, Idaho | 83714  
ph 208.387.6100 | fx 208.345.7650

*tellus@achdidaho.org | www.achdidaho.org*

## COMMISSION MEETINGS

First, Second and Third Wednesdays of the Month.....Noon  
Fourth Wednesday of the Month.....6 p.m.

## PHONE NUMBERS

Administration	387-6120
Commissioners	387-6110
Communications	387-6100
Commuteride	387-6160
Director's Office	387-6110
Engineering	387-6221
Human Resources	387-6100
Legal	387-6113
Maintenance	387-6320
Planning & Projects	387-6119
Capital Projects	387-6225
Right-of-Way & Development	387-6170
Traffic	387-6140





## 2010 MISSION & GUIDING PRINCIPLES

---

Provide the best public highway system for the safe and efficient movement of people and goods throughout Ada County

---

- Progressively maintain, improve, design and build a high-quality highway system through systematic and innovative practices
- Lead in all areas of safety
- Optimize the use of fiscal resources
- Proactively plan, layout and preserve corridors for future highway needs
- Be one of the most responsive and informative public service organizations in the Treasure Valley
- Respect the environment in all our activities
- Pursue beneficial relationships with public and private entities
- Make ACHD an exciting, rewarding and value-centered workplace

## SERVICE PRINCIPLES

---

**Smile** when talking, it puts others at ease and comes through in your voice • **Escort** people through the District - whether physically, on a map or over the phone; when possible, physically and figuratively walk them through the process • **Respect** customers, callers and co-workers; treat them the way in which you'd like to be treated • **Voice** your thanks and encouragement for a job well done; we all support one another • **Involve** yourself in issues brought to you by customers and co-workers; inattention and indifference can create lasting negative feedback • **Call** back within one day; if put on voice mail, leave your return name and telephone number • **Educate** customers on what they need to know to get the information or answer they desire



ADA COUNTY HIGHWAY DISTRICT

3775 Adams Street | Garden City, Idaho | 83714

ph 208.387.6100 | fx 208.345.7650

*tellus@achdidaho.org | [www.achdidaho.org](http://www.achdidaho.org)*