

- NOTES:**
1. THE FOUNDATION SHALL BE LOCATED AS INDICATED ON THE SIGNAL PLAN SHEETS. THE FOUNDATION LOCATION SHALL BE FIELD VERIFIED BY ACHD PRIOR TO FOUNDATION INSTALLATION.
 2. SIGNAL CABINETS SHOULD BE ORIENTED SUCH THAT THE INTERSECTION IS IN FRONT OF A PERSON OPERATING THE CONTROLLER PANEL (I.E., THE CONTROLLER DOOR OPENS AWAY FROM THE INTERSECTION).
 3. A THREE (3) FOOT (MIN.) CONCRETE LANDING PAD FOUR (4) INCHES THICK AND ONE INCH (1") SLOPE FOR DRAINAGE SHOULD BE PLACED IN FRONT OF THE PANEL DOOR FOR CONTROLLER ACCESS. WHERE APPLICABLE, A SIDEWALK CAN SUBSTITUTE FOR THE LANDING PAD REQUIREMENT.
 4. ALL CONDUITS, ELBOWS AND COUPLINGS WITHIN AND PROTRUDING FROM THE FOUNDATION SHALL BE RIGID PVC. THE REMAINING CONDUITS SHALL BE AS SHOWN ON THE PLANS.
 5. MOLDED PLUGS SHALL BE REQUIRED AT BOTH ENDS OF SPARE CONDUITS.
 6. USE DIMENSION "A" FOR THE CABINET FOUNDATION AND PAD WHEN THE SERVICE PEDESTAL IS NOT REQUIRED.
 7. GROUND IN ACCORDANCE WITH N.E.C.
 8. CONDUIT SHALL BE INSTALLED IN SUCH A MANNER AS TO NOT CAUSE MODIFICATION OF THE CABINET.
 9. 6" WIDE ELECTRICAL HAZARD TAPE INSTALLED 1'-0" ABOVE CONDUIT (TYP. FOR ALL CONDUIT).
 10. SEE SIGNAL PLAN FOR NUMBER OF CONDUITS AND CONDUIT ROUTING.
 11. CONTRACTOR SHALL OBTAIN BOLT PATTERN REQUIREMENTS FROM THE ACHD TRAFFIC SIGNAL INSPECTOR.

FOUNDATION SCHEDULE																								
CABINET TYPE	FOUNDATION TYPE	A	B	C	D	E	CABINET ONLY				CABINET AND SERVICE PEDESTALS													
							HOOPS NO.	HOOPS SIZE	VERTICAL RODS NO.	VERTICAL RODS SIZE	CU. YDS. FOUNDATION	CONC. PAD	HOOPS NO.	HOOPS SIZE	VERTICAL RODS NO.	VERTICAL RODS SIZE	CU. YDS. FOUNDATION	CONC. PAD	ANCHOR BOLT QNTY.	ANCHOR BOLT SIZE				
SIGNAL	M	2'-9"	1'-9"	—	—	1'-0"	3	#4	24'0"	6	#4	13'0"	0.5	0.1	3	#4	38'6"	8	#4	17'4"	1.05	0.2	2	3/8" x 18" x 4"
	P	4'-0.5"	2'-6"	3'-4.5"	1'-6.5"	—	3	#4	35'6"	6	#4	13'0"	1.1	0.1	3	#4	50'0"	8	#4	17'4"	1.90	0.2	4	3/8" x 18" x 4"
ITS	ITS	2'-0"	2'-6"	1'-3"	2'-1"	—	2	#4	19'0"	4	#4	4'8"	0.4	0.1	—	—	—	—	—	—	—	—	4	3/8" x 15" x 2"

NO.	DATE	BY	DESCRIPTION
1	9/16	JMS	Added ITS cabinet type, minor modifications.
2	9/14	JMS	Modified cabinet foundation dimensions.
3	12/18	JMS	Added notes.



Scale: NTP	Drawn By: Joshua Beak
Date: 12/16/08	Design By: Joshua Beak
File: TS-1111.01.DWG	Approved By: Tim Larsen

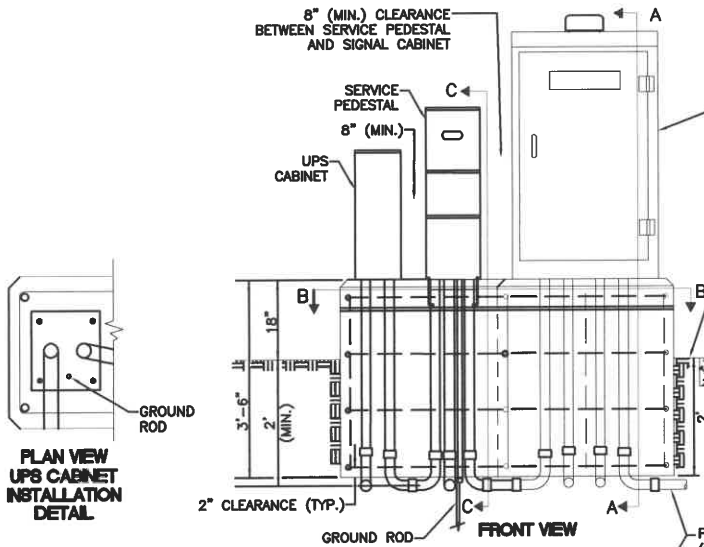
Standard Cabinet Foundation Detail



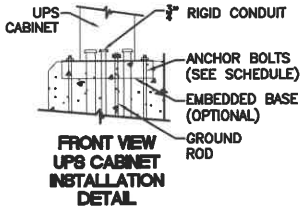
STANDARD DETAIL NO. TS-1111.01

7/12/2019

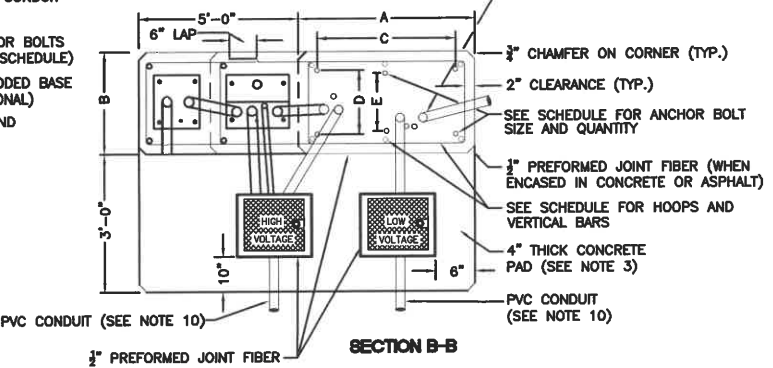
TS-1111.01.DWG Standard Plans 11/11/08



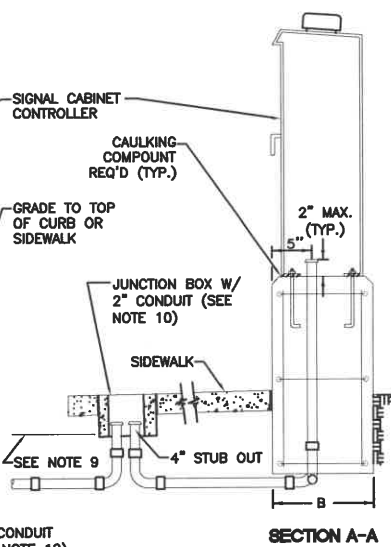
**PLAN VIEW
UPS CABINET
INSTALLATION
DETAIL**



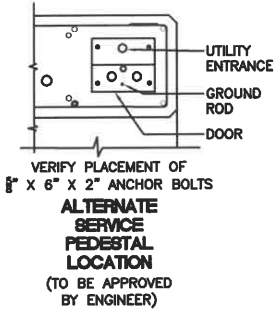
**FRONT VIEW
UPS CABINET
INSTALLATION
DETAIL**



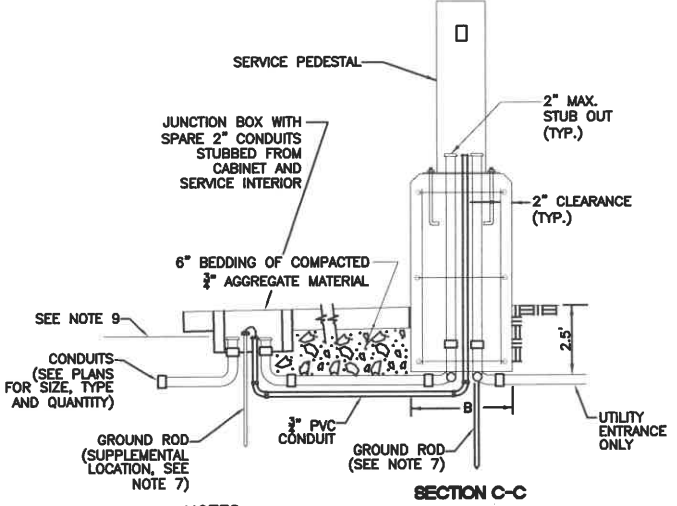
SECTION B-B



SECTION A-A



**ALTERNATE
SERVICE
PEDESTAL
LOCATION
(TO BE APPROVED
BY ENGINEER)**



SECTION C-C

NOTES:

1. THE FOUNDATION SHALL BE LOCATED AS INDICATED ON THE SIGNAL PLAN SHEETS. THE FOUNDATION LOCATION SHALL BE FIELD VERIFIED BY ACHD PRIOR TO FOUNDATION INSTALLATION.
2. SIGNAL CABINETS SHOULD BE ORIENTED SUCH THAT THE INTERSECTION IS IN FRONT OF A PERSON OPERATING THE CONTROLLER PANEL (I.E., THE CONTROLLER DOOR OPENS AWAY FROM THE INTERSECTION).
3. A THREE (3) FOOT (MIN.) CONCRETE LANDING PAD FOUR (4) INCHES THICK AND ONE INCH (1") SLOPE FOR DRAINAGE SHOULD BE PLACED IN FRONT OF THE PANEL DOOR FOR CONTROLLER ACCESS. WHERE APPLICABLE, A SIDEWALK CAN SUBSTITUTE FOR THE LANDING PAD REQUIREMENT.
4. ALL CONDUITS, ELBOWS AND COUPLINGS WITHIN AND PROTRUDING FROM THE FOUNDATION SHALL BE RIGID PVC. THE REMAINING CONDUITS SHALL BE AS SHOWN ON THE PLANS.
5. MOLDED PLUGS SHALL BE REQUIRED AT BOTH ENDS OF SPARE CONDUITS.
6. USE DIMENSION "A" FOR THE CABINET FOUNDATION AND PAD WHEN THE SERVICE PEDESTAL IS NOT REQUIRED.
7. GROUND IN ACCORDANCE WITH N.E.C.
8. CONDUIT SHALL BE INSTALLED IN SUCH A MANNER AS TO NOT CAUSE MODIFICATION OF THE CABINET.
9. 6" WIDE ELECTRICAL HAZARD TAPE INSTALLED 1'-0" ABOVE CONDUIT (TYP. FOR ALL CONDUIT PLACED IN THE GROUND).
10. SEE SIGNAL PLAN FOR NUMBER OF CONDUITS AND CONDUIT ROUTING.
11. CONTRACTOR SHALL OBTAIN BOLT PATTERN REQUIREMENTS FROM THE ACHD TRAFFIC SIGNAL INSPECTOR.

TYPE P (MODIFIED) FOUNDATION SCHEDULE														
CABINET TYPE	FOUNDATION TYPE	CABINET AND SERVICE PEDESTALS					HOOPS NO. SIZE	VERTICAL RODS NO. SIZE	CY CONC. FOUNDATION	PAD QNTY.	ANCHOR BOLT SIZE			
		A	B	C	D	E								
SIGNAL	P (MOD)	4'-2"	2'-5"	3'-4.75"	1'-6.5"	--	4 #4	90'0"	10 #4	31'-8"	2.8	0.3	4	0.75"x18"x2.25"

NO.	DATE	BY	DESCRIPTION
REVISIONS			



SIGNATURES	
Scale: 3/8"	Drawn By: Joshua Shalk
Date: 8/13/2019	Design By: Joshua Shalk
File: TS-1111.08.DWG	Approved By: Greg Pullerton

SHEET TITLE
Standard Cabinet
Foundation Detail with UPS



STANDARD DETAIL NO.
TS-1111.02

